

## Product datasheet for **TA323990**

### GM CSF Receptor alpha (CSF2RA) Rabbit Polyclonal Antibody

#### Product data:

Product Type:	Primary Antibodies
Applications:	IHC, WB
Recommended Dilution:	WB: 500-2000 WB positive control: Human placenta tissue and HepG2 cells IHC: 50-200 Positive control: Human cervical cancer Predicted cell location: Cytoplasm
Reactivity:	Human
Host:	Rabbit
Isotype:	IgG
Clonality:	Polyclonal
Immunogen:	Synthetic peptide corresponding to a region derived from 386-400 amino acids of Human colony stimulating factor 2 receptor, alpha, low-affinity (granulocyte-macrophage)
Formulation:	PBS pH7.3, 0.05% NaN <sub>3</sub> , 50% glycerol
Concentration:	lot specific
Purification:	Antigen affinity purification
Conjugation:	Unconjugated
Storage:	Store at -20°C as received.
Stability:	Stable for 12 months from date of receipt.
Predicted Protein Size:	50 kDa
Gene Name:	colony stimulating factor 2 receptor alpha subunit
Database Link:	<a href="#">NP_001155001</a> <a href="#">Entrez Gene 1438 Human</a> <a href="#">P15509</a>



[View online »](#)

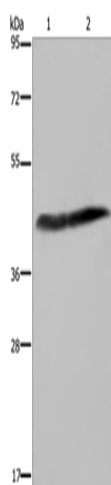
**Background:** The protein encoded by this gene is the alpha subunit of the heterodimeric receptor for colony stimulating factor 2; a cytokine which controls the production; differentiation; and function of granulocytes and macrophages. The encoded protein is a member of the cytokine family of receptors. This gene is found in the pseudoautosomal region (PAR) of the X and Y chromosomes. Multiple transcript variants encoding different isoforms have been found for this gene; with some of the isoforms being membrane-bound and others being soluble.

**Synonyms:** CD116; CDw116; CSF2R; CSF2RAX; CSF2RAY; CSF2RX; CSF2RY; GM-CSF-R-alpha; GMCSFR; GMR; SMDP4

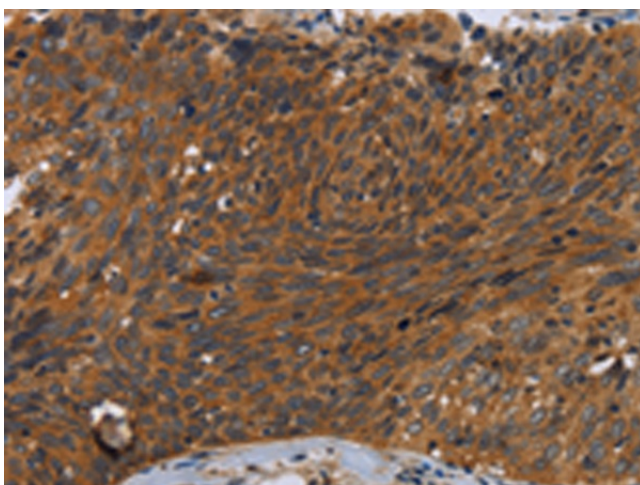
**Protein Families:** Druggable Genome, Secreted Protein, Transmembrane

**Protein Pathways:** Cytokine-cytokine receptor interaction, Hematopoietic cell lineage, Jak-STAT signaling pathway, Pathways in cancer

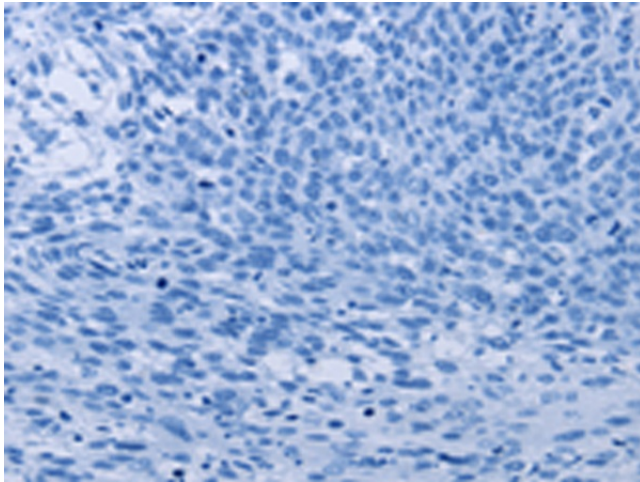
### Product images:



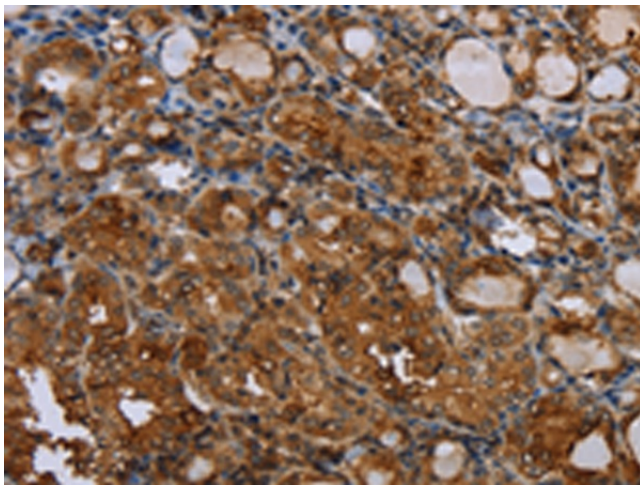
Gel: 8%SDS-PAGE  
Lysate: 40 µg  
Lane 1-2: Human placenta tissue  
HepG2 cells  
Primary antibody: TA323990 (CSF2RA Antibody)  
at dilution 1/250  
Secondary antibody: Goat anti rabbit IgG at  
1/8000 dilution  
Exposure time: 3 seconds



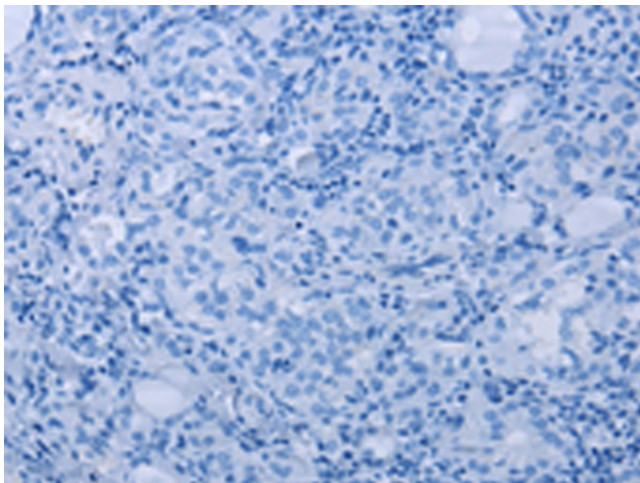
Immunohistochemistry of paraffin-embedded  
Human cervical cancer tissue using TA323990  
(CSF2RA Antibody) at dilution 1/35 (Original  
magnification: ×200)



Immunohistochemistry of paraffin-embedded Human cervical cancer tissue using TA323990 (CSF2RA Antibody) at dilution 1/35, treated with synthetic peptide. (Original magnification:  $\times 200$ )



Immunohistochemistry of paraffin-embedded Human thyroid cancer tissue using TA323990 (CSF2RA Antibody) at dilution 1/35 (Original magnification:  $\times 200$ )



Immunohistochemistry of paraffin-embedded Human thyroid cancer tissue using TA323990 (CSF2RA Antibody) at dilution 1/35, treated with synthetic peptide. (Original magnification:  $\times 200$ )