

## Product datasheet for **TA323989S**

### GM-CSF Receptor alpha (CSF2RA) Rabbit Polyclonal Antibody

#### Product data:

Product Type:	Primary Antibodies
Applications:	WB
Recommended Dilution:	WB: 500-2000 WB positive control: Mouse heart tissue
Reactivity:	Human, Mouse
Host:	Rabbit
Isotype:	IgG
Clonality:	Polyclonal
Immunogen:	Synthetic peptide corresponding to a region derived from 386-400 amino acids of Human colony stimulating factor 2 receptor, alpha, low-affinity (granulocyte-macrophage)
Formulation:	PBS pH7.3, 0.05% NaN <sub>3</sub> , 50% glycerol
Purification:	Antigen affinity purification
Conjugation:	Unconjugated
Storage:	Store at -20°C as received.
Stability:	Stable for 12 months from date of receipt.
Predicted Protein Size:	50 kDa
Gene Name:	colony stimulating factor 2 receptor alpha subunit
Database Link:	<a href="#">NP_001155001</a> <a href="#">Entrez Gene 12982 Mouse</a> <a href="#">Entrez Gene 1438 Human</a> <a href="#">P15509</a>
Background:	The protein encoded by this gene is the alpha subunit of the heterodimeric receptor for colony stimulating factor 2; a cytokine which controls the production; differentiation; and function of granulocytes and macrophages. The encoded protein is a member of the cytokine family of receptors. This gene is found in the pseudoautosomal region (PAR) of the X and Y chromosomes. Multiple transcript variants encoding different isoforms have been found for this gene; with some of the isoforms being membrane-bound and others being soluble.
Synonyms:	CD116; CDw116; CSF2R; CSF2RAX; CSF2RAY; CSF2RX; CSF2RY; GM-CSF-R-alpha; GMCSFR; GMR; SMDP4

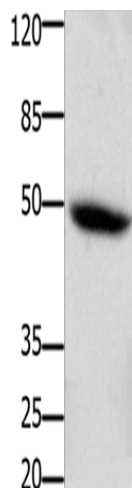


[View online »](#)

**Protein Families:** Druggable Genome, Secreted Protein, Transmembrane

**Protein Pathways:** Cytokine-cytokine receptor interaction, Hematopoietic cell lineage, Jak-STAT signaling pathway, Pathways in cancer

**Product images:**



Gel: 10+12%SDS-PAGE  
Lysate: 30 µg  
Lane: Mouse heart tissue  
Primary antibody: [TA323989] (CSF2RA Antibody)  
at dilution 1/400  
Secondary antibody: Goat anti rabbit IgG at  
1/8000 dilution  
Exposure time: 5 minutes