

## Product datasheet for **TA323987**

### PRKAR1B Rabbit Polyclonal Antibody

#### Product data:

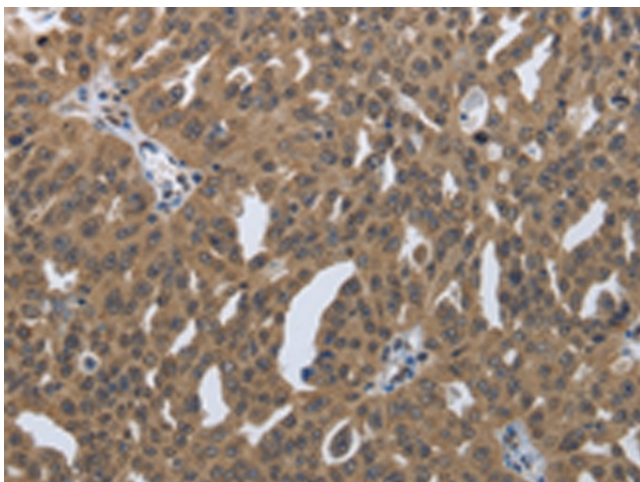
Product Type:	Primary Antibodies
Applications:	IHC
Recommended Dilution:	IHC: 50-200 Positive control: Human ovarian cancer Predicted cell location: Cytoplasm, Nucleus
Reactivity:	Human, Mouse, Rat
Host:	Rabbit
Isotype:	IgG
Clonality:	Polyclonal
Immunogen:	Synthetic peptide corresponding to a region derived from 50-62 amino acids of Human protein kinase, cAMP-dependent, regulatory, type I, beta
Formulation:	PBS pH7.3, 0.05% NaN <sub>3</sub> , 50% glycerol
Concentration:	lot specific
Purification:	Antigen affinity purification
Conjugation:	Unconjugated
Storage:	Store at -20°C as received.
Stability:	Stable for 12 months from date of receipt.
Gene Name:	protein kinase cAMP-dependent type I regulatory subunit beta
Database Link:	<a href="#">NP_002726</a> <a href="#">Entrez Gene 19085 MouseEntrez Gene 25521 RatEntrez Gene 5575 Human P31321</a>
Background:	Cyclic AMP-dependent protein kinase A (PKA) is an essential enzyme in the signaling pathway of the second messenger cAMP. Through phosphorylation of target proteins; PKA controls many biochemical events in the cell including regulation of metabolism; ion transport; and gene transcription. The PKA holoenzyme is composed of 2 regulatory and 2 catalytic subunits and dissociates from the regulatory subunits upon binding of cAMP.
Synonyms:	PRKAR1
Protein Families:	Druggable Genome



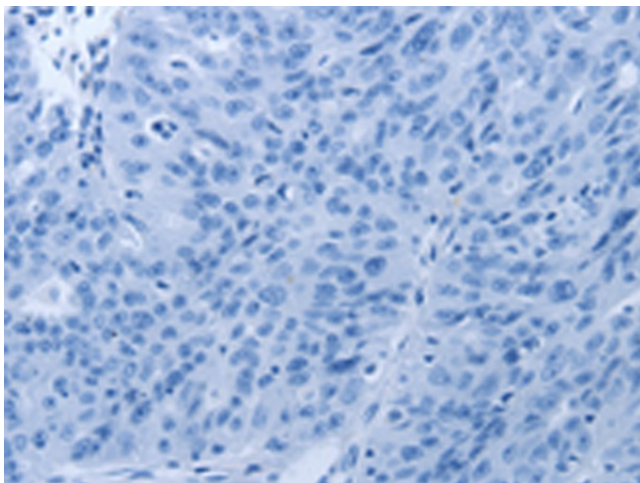
[View online »](#)

Protein Pathways: Apoptosis, Insulin signaling pathway

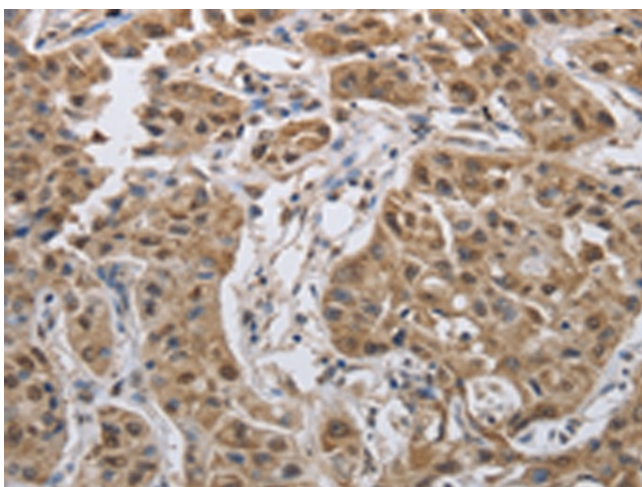
### Product images:



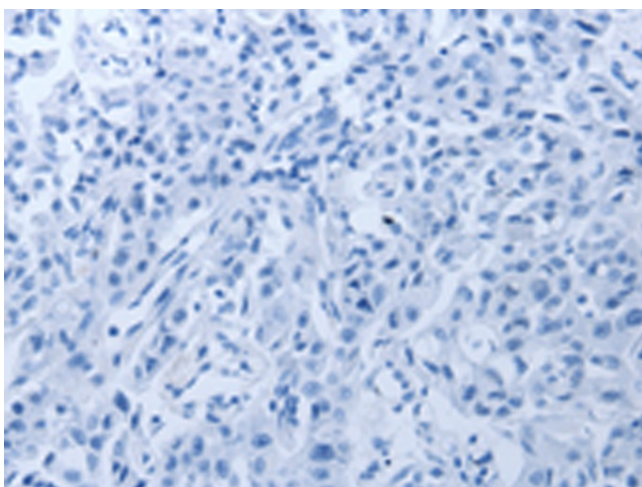
Immunohistochemistry of paraffin-embedded Human ovarian cancer tissue using TA323987 (PRKAR1B Antibody) at dilution 1/60 (Original magnification:  $\times 200$ )



Immunohistochemistry of paraffin-embedded Human ovarian cancer tissue using TA323987 (PRKAR1B Antibody) at dilution 1/60, treated with synthetic peptide. (Original magnification:  $\times 200$ )



Immunohistochemistry of paraffin-embedded Human lung cancer tissue using TA323987 (PRKAR1B Antibody) at dilution 1/60 (Original magnification:  $\times 200$ )



Immunohistochemistry of paraffin-embedded Human lung cancer tissue using TA323987 (PRKAR1B Antibody) at dilution 1/60, treated with synthetic peptide. (Original magnification:  $\times 200$ )