

Product datasheet for **TA323986**

PRKAR1B Rabbit Polyclonal Antibody

Product data:

Product Type:	Primary Antibodies
Applications:	IHC, WB
Recommended Dilution:	WB: 1000-5000 WB positive control: Human colon cancer tissue IHC: 50-200 Positive control: Human breast cancer Predicted cell location: Cytoplasm, Nucleus
Reactivity:	Human, Mouse, Rat
Host:	Rabbit
Isotype:	IgG
Clonality:	Polyclonal
Immunogen:	Synthetic peptide corresponding to a region derived from 50-62 amino acids of Human protein kinase, cAMP-dependent, regulatory, type I, beta
Formulation:	PBS pH7.3, 0.05% NaN ₃ , 50% glycerol
Concentration:	lot specific
Purification:	Antigen affinity purification
Conjugation:	Unconjugated
Storage:	Store at -20°C as received.
Stability:	Stable for 12 months from date of receipt.
Predicted Protein Size:	43 kDa
Gene Name:	protein kinase cAMP-dependent type I regulatory subunit beta
Database Link:	NP_001158230 Entrez Gene 19085 Mouse Entrez Gene 25521 Rat Entrez Gene 5575 Human P31321



[View online »](#)

Background:

Cyclic AMP-dependent protein kinase A (PKA) is an essential enzyme in the signaling pathway of the second messenger cAMP. Through phosphorylation of target proteins, PKA controls many biochemical events in the cell including regulation of metabolism, ion transport, and gene transcription. The PKA holoenzyme is composed of 2 regulatory and 2 catalytic subunits and dissociates from the regulatory subunits upon binding of cAMP.

Synonyms:

PRKAR1

Protein Families:

Druggable Genome

Protein Pathways:

Apoptosis, Insulin signaling pathway

Product images:

Gel: 10%SDS-PAGE

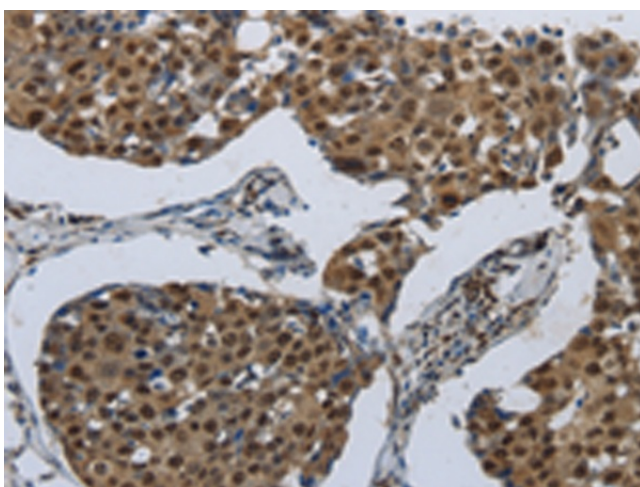
Lysate: 40 µg

Lane: Human colon cancer tissue

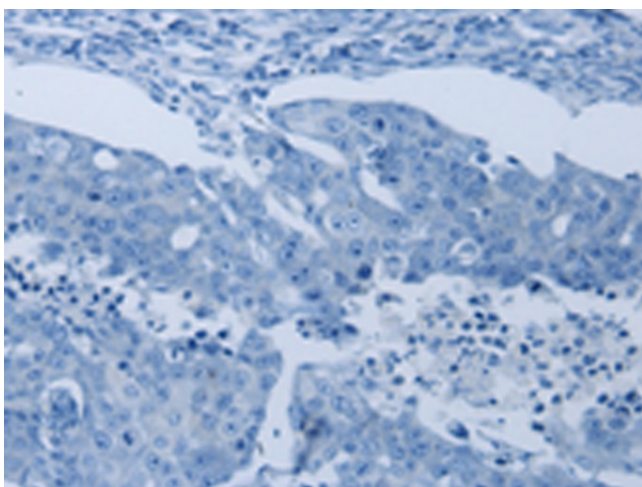
Primary antibody: TA323986 (PRKAR1B Antibody) at dilution 1/1200

Secondary antibody: Goat anti rabbit IgG at 1/8000 dilution

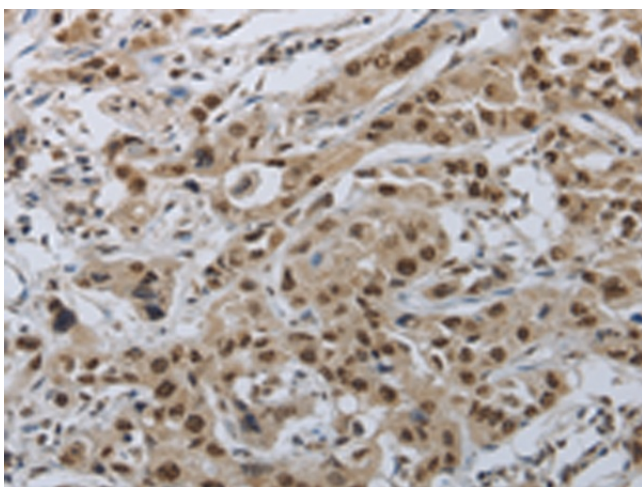
Exposure time: 20 seconds



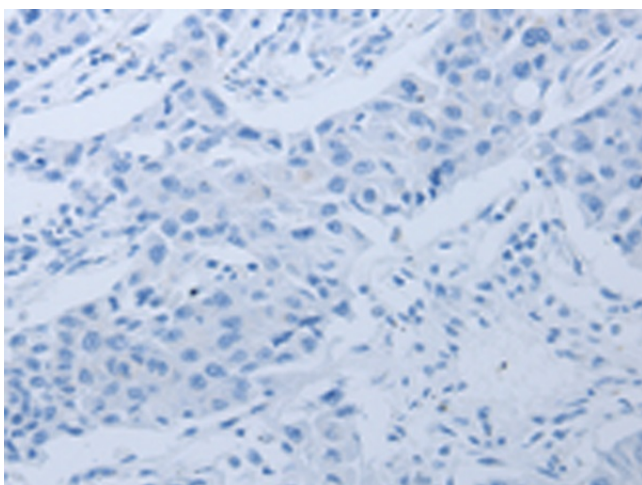
Immunohistochemistry of paraffin-embedded Human breast cancer tissue using TA323986 (PRKAR1B Antibody) at dilution 1/70 (Original magnification: ×200)



Immunohistochemistry of paraffin-embedded Human breast cancer tissue using TA323986 (PRKAR1B Antibody) at dilution 1/70, treated with synthetic peptide. (Original magnification: $\times 200$)



Immunohistochemistry of paraffin-embedded Human lung cancer tissue using TA323986 (PRKAR1B Antibody) at dilution 1/70 (Original magnification: $\times 200$)



Immunohistochemistry of paraffin-embedded Human lung cancer tissue using TA323986 (PRKAR1B Antibody) at dilution 1/70, treated with synthetic peptide. (Original magnification: $\times 200$)