

Product datasheet for **TA323982S**

FHIT Rabbit Polyclonal Antibody

Product data:

Product Type:	Primary Antibodies
Applications:	IHC, WB
Recommended Dilution:	WB: 500-2000 WB positive control: Mouse brain and human fetal kidney tissue IHC: 25-100 Positive control: Human thyroid cancer Predicted cell location: Cytoplasm
Reactivity:	Human, Mouse, Rat
Host:	Rabbit
Isotype:	IgG
Clonality:	Polyclonal
Immunogen:	Full length fusion protein
Formulation:	PBS pH7.3, 0.05% NaN ₃ , 50% glycerol
Purification:	Antigen affinity purification
Conjugation:	Unconjugated
Storage:	Store at -20°C as received.
Stability:	Stable for 12 months from date of receipt.
Predicted Protein Size:	17 kDa
Gene Name:	fragile histidine triad
Database Link:	NP_001159715 Entrez Gene 14198 MouseEntrez Gene 60398 RatEntrez Gene 2272 Human P49789

Background: This gene; a member of the histidine triad gene family; encodes a diadenosine 5';5'''-P1;P3-triphosphate hydrolase involved in purine metabolism. The gene encompasses the common fragile site FRA3B on chromosome 3; where carcinogen-induced damage can lead to translocations and aberrant transcripts of this gene. In fact; aberrant transcripts from this gene have been found in about half of all esophageal; stomach; and colon carcinomas. Alternatively spliced transcript variants have been found for this gene.

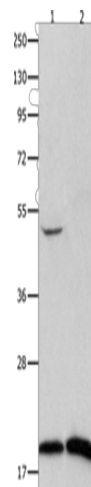


[View online »](#)

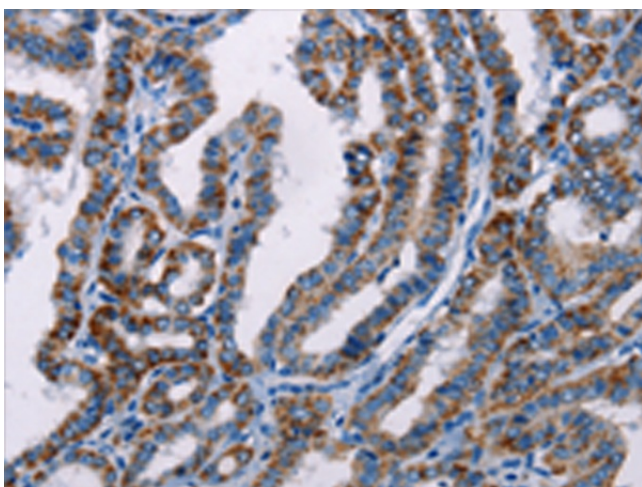
Synonyms: AP3Aase; FRA3B

Protein Pathways: Non-small cell lung cancer, Purine metabolism, Small cell lung cancer

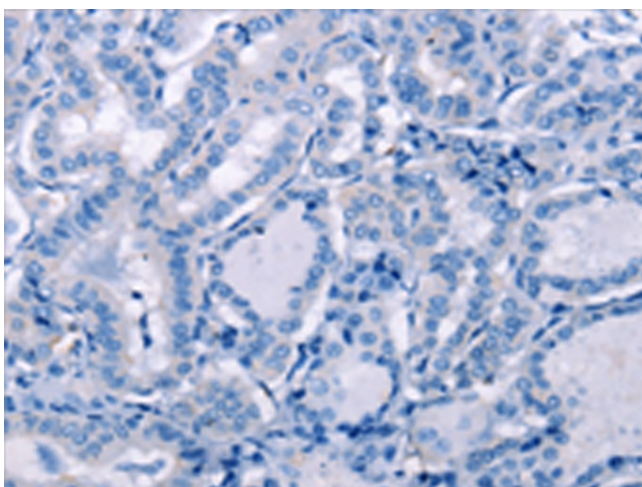
Product images:



Gel: 8+12%SDS-PAGE
Lysate: 30 µg
Lane 1-2: Mouse brain tissue
human fetal kidney tissue
Primary antibody: [TA323982] (FHIT Antibody) at
dilution 1/350
Secondary antibody: Goat anti rabbit IgG at
1/8000 dilution
Exposure time: 30 seconds



Immunohistochemistry of paraffin-embedded
Human thyroid cancer tissue using [TA323982]
(FHIT Antibody) at dilution 1/25 (Original
magnification: ×200)



Immunohistochemistry of paraffin-embedded Human thyroid cancer tissue using [TA323982] (FHIT Antibody) at dilution 1/25, treated with fusion protein. (Original magnification: ×200)