

Product datasheet for **TA323980**

SPATA13 Rabbit Polyclonal Antibody

Product data:

Product Type:	Primary Antibodies
Applications:	IHC, WB
Recommended Dilution:	WB: 200-1000 WB positive control: Hela cells IHC: 25-100 Positive control: Human colon cancer Predicted cell location: Cytoplasm
Reactivity:	Human, Mouse
Host:	Rabbit
Isotype:	IgG
Clonality:	Polyclonal
Immunogen:	Fusion protein corresponding to a region derived from 240-424 amino acids of human spermatogenesis associated 13
Formulation:	PBS pH7.3, 0.05% NaN ₃ , 50% glycerol
Concentration:	lot specific
Purification:	Antigen affinity purification
Conjugation:	Unconjugated
Storage:	Store at -20°C as received.
Stability:	Stable for 12 months from date of receipt.
Predicted Protein Size:	75 kDa
Gene Name:	spermatogenesis associated 13
Database Link:	NP_001159743 Entrez Gene 219140 Mouse Entrez Gene 221178 Human Q96N96



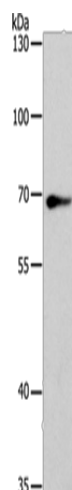
[View online »](#)

Background:

Acts as guanine nucleotide exchange factor (GEF) for RHOA, RAC1 and CDC42 GTPases. Regulates cell migration and adhesion assembly and disassembly through a RAC1, PI3K, RHOA and AKT1-dependent mechanism. Increases both RAC1 and CDC42 activity, but decreases the amount of active RHOA. Required for MMP9 up-regulation via the JNK signaling pathway in colorectal tumor cells. Involved in tumor angiogenesis and may play a role in intestinal adenoma formation and tumor progression. Both the ABR and the SH3 domains contribute to maintaining the protein in an inhibited conformation by associating with the C-terminal tail. Binding of these domains to the C-terminal tail inhibits the activity of the protein by blocking a region that is required for its GEF activity.

Synonyms:

ARHGEF29; ASEF2

Product images:

Gel: 8%SDS-PAGE

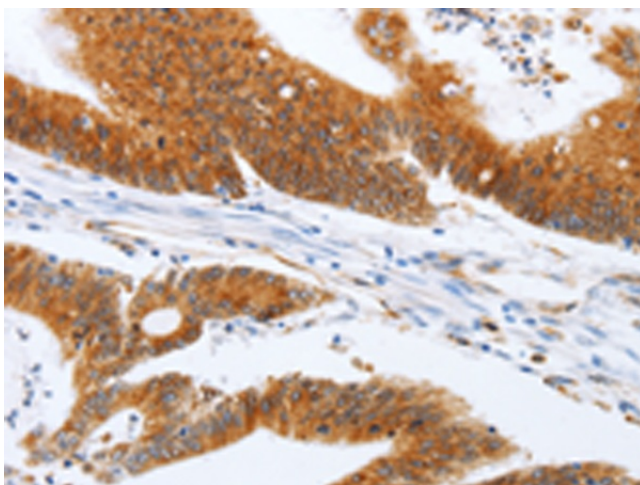
Lysate: 40 µg

Lane: HeLa cells

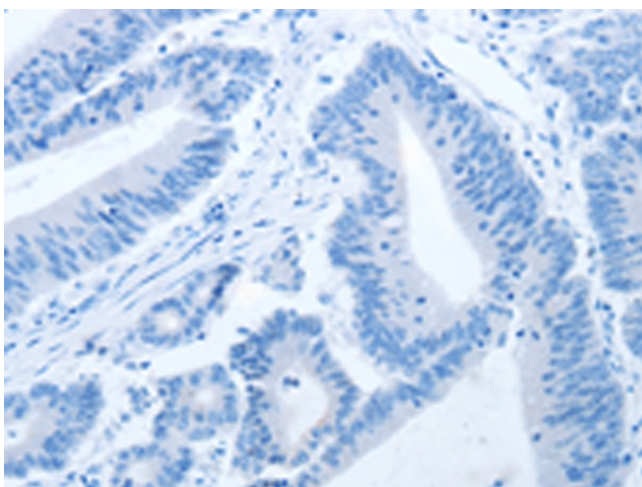
Primary antibody: TA323980 (SPATA13 Antibody) at dilution 1/200

Secondary antibody: Goat anti rabbit IgG at 1/8000 dilution

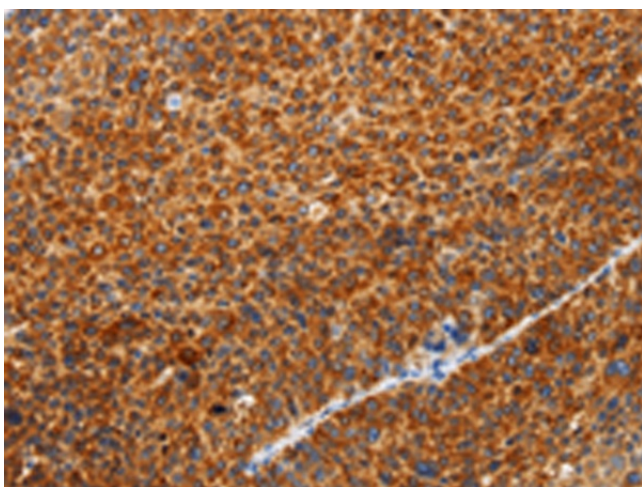
Exposure time: 5 seconds



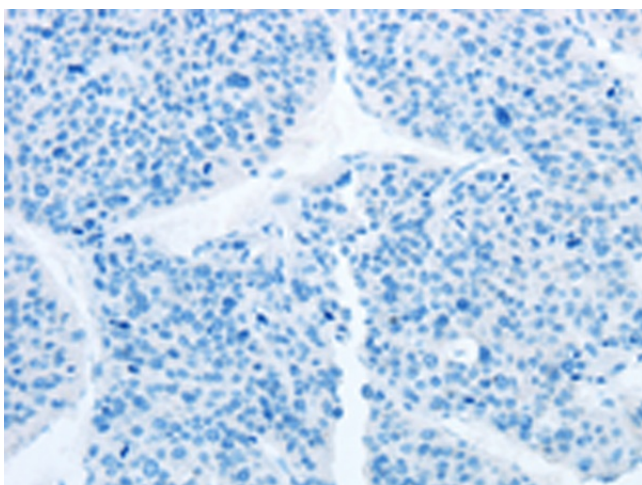
Immunohistochemistry of paraffin-embedded Human colon cancer tissue using TA323980 (SPATA13 Antibody) at dilution 1/20 (Original magnification: ×200)



Immunohistochemistry of paraffin-embedded Human colon cancer tissue using TA323980 (SPATA13 Antibody) at dilution 1/20, treated with fusion protein. (Original magnification: $\times 200$)



Immunohistochemistry of paraffin-embedded Human liver cancer tissue using TA323980 (SPATA13 Antibody) at dilution 1/20 (Original magnification: $\times 200$)



Immunohistochemistry of paraffin-embedded Human liver cancer tissue using TA323980 (SPATA13 Antibody) at dilution 1/20, treated with fusion protein. (Original magnification: $\times 200$)