

## Product datasheet for **TA323979**

### ABCB5 Rabbit Polyclonal Antibody

#### Product data:

Product Type:	Primary Antibodies
Applications:	IHC, WB
Recommended Dilution:	WB: 500-2000 WB positive control: 293T cell lysate IHC: 50-200 Positive control: Human liver cancer Predicted cell location: Cell membrane
Reactivity:	Human, Mouse
Host:	Rabbit
Isotype:	IgG
Clonality:	Polyclonal
Immunogen:	Fusion protein corresponding to a region derived from 563-812 amino acids of Human ATP-binding cassette sub-family B member 5
Formulation:	PBS pH7.3, 0.05% NaN <sub>3</sub> , 50% glycerol
Concentration:	lot specific
Purification:	Antigen affinity purification
Conjugation:	Unconjugated
Storage:	Store at -20°C as received.
Stability:	Stable for 12 months from date of receipt.
Gene Name:	ATP binding cassette subfamily B member 5
Database Link:	<a href="#">NP_848654</a> <a href="#">Entrez Gene 77706 Mouse</a> <a href="#">Entrez Gene 340273 Human</a> <a href="#">Q2M3G0</a>
Background:	ABCB5 belongs to the ATP-binding cassette (ABC) transporter superfamily of integral membrane proteins. These proteins participate in ATP-dependent transmembrane transport of structurally diverse molecules ranging from small ions; sugars; and peptides to more complex organic molecules.
Synonyms:	ABCB5alpha; ABCB5beta; EST422562

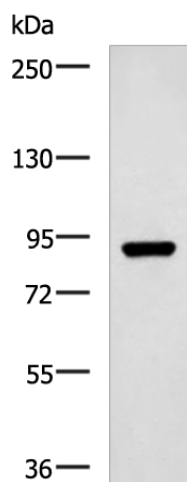


[View online »](#)

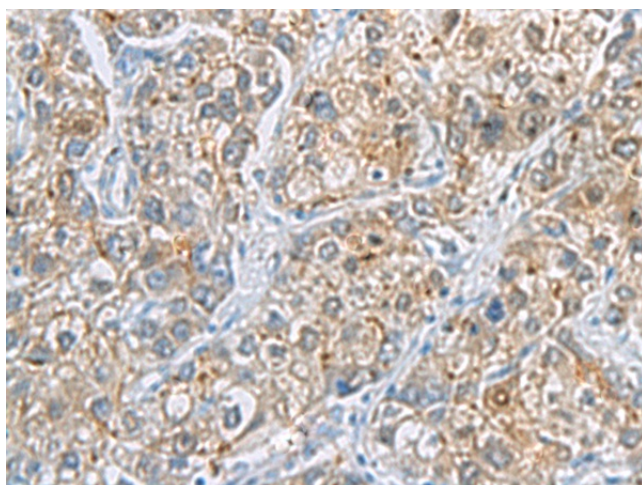
Protein Families: Druggable Genome, Transmembrane

Protein Pathways: ABC transporters

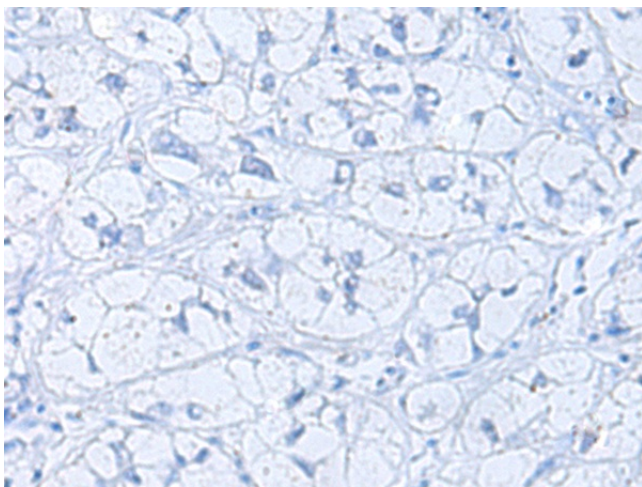
### Product images:



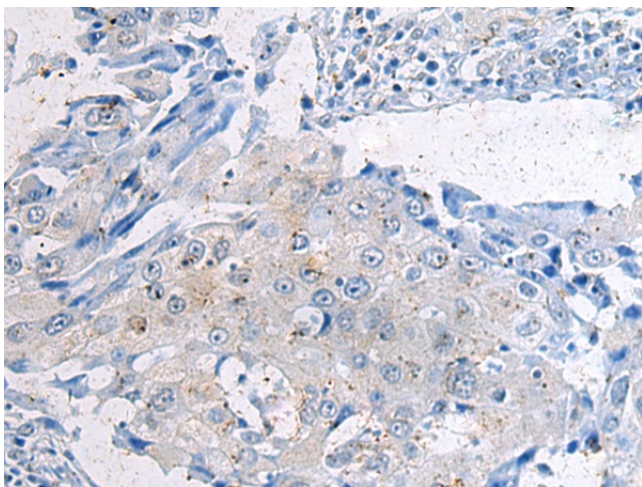
Gel: 6%SDS-PAGE  
Lysate: 40  $\mu$ g  
Lane: 293T cell lysate  
Primary antibody: TA323979 (ABCB5 Antibody) at dilution 1/600  
Secondary antibody: Goat anti rabbit IgG at 1/5000 dilution  
Exposure time: 20 seconds



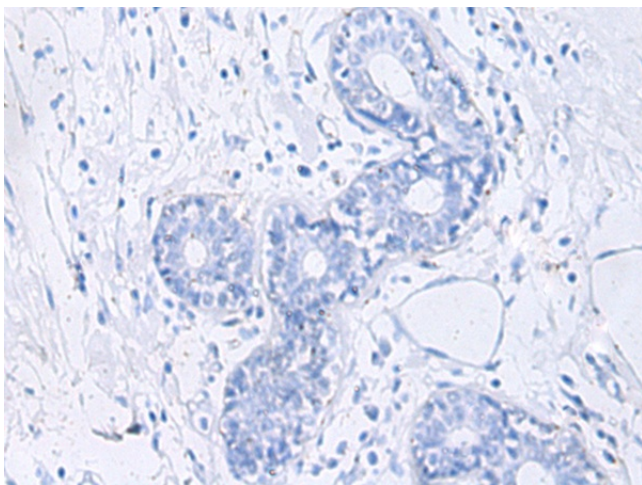
Immunohistochemistry of paraffin-embedded Human liver cancer tissue using TA323979 (ABCB5 Antibody) at dilution 1/70 (Original magnification:  $\times$ 200)



Immunohistochemistry of paraffin-embedded Human liver cancer tissue using TA323979 (ABCB5 Antibody) at dilution 1/70, treated with fusion protein. (Original magnification:  $\times 200$ )



Immunohistochemistry of paraffin-embedded Human breast cancer tissue using TA323979 (ABCB5 Antibody) at dilution 1/70 (Original magnification:  $\times 200$ )



Immunohistochemistry of paraffin-embedded Human breast cancer tissue using TA323979 (ABCB5 Antibody) at dilution 1/70, treated with fusion protein. (Original magnification:  $\times 200$ )