

## Product datasheet for **TA323976S**

### SLC12A4 Rabbit Polyclonal Antibody

#### Product data:

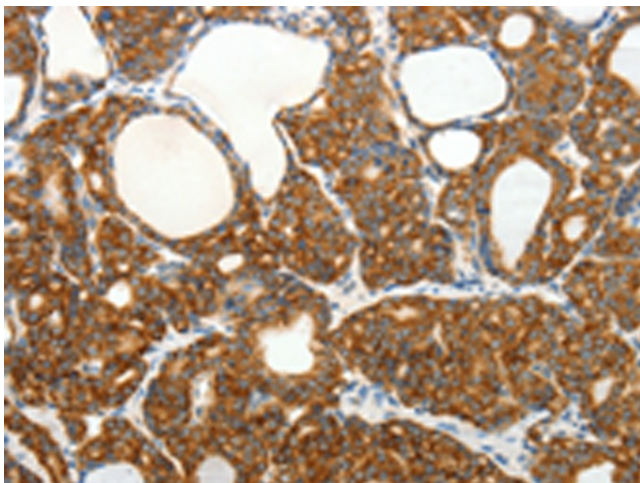
Product Type:	Primary Antibodies
Applications:	IHC
Recommended Dilution:	IHC: 50-200 Positive control: Human thyroid cancer Predicted cell location: Cytoplasm
Reactivity:	Human, Mouse, Rat
Host:	Rabbit
Isotype:	IgG
Clonality:	Polyclonal
Immunogen:	Fusion protein corresponding to a region derived from 866-1085 amino acids of human solute carrier family 12 (potassium/chloride transporters), member 4
Formulation:	PBS pH7.3, 0.05% NaN <sub>3</sub> , 50% glycerol
Purification:	Antigen affinity purification
Conjugation:	Unconjugated
Storage:	Store at -20°C as received.
Stability:	Stable for 12 months from date of receipt.
Gene Name:	solute carrier family 12 member 4
Database Link:	<a href="#">NP_005063</a> <a href="#">Entrez Gene 20498 Mouse</a> <a href="#">Entrez Gene 29501 Rat</a> <a href="#">Entrez Gene 6560 Human</a> <a href="#">Q9UP95</a>
Background:	This gene encodes a member of the SLC12A transporter family. The encoded protein mediates the coupled movement of potassium and chloride ions across the plasma membrane. This gene is expressed ubiquitously. Multiple alternatively spliced transcript variants encoding distinct isoforms have been found for this gene. Mediates electroneutral potassium-chloride cotransport when activated by cell swelling. May contribute to cell volume homeostasis in single cells. May be involved in the regulation of basolateral Cl <sup>-</sup> exit in NaCl absorbing epithelia.
Synonyms:	CTC-479C5.17; hKCC1; KCC1



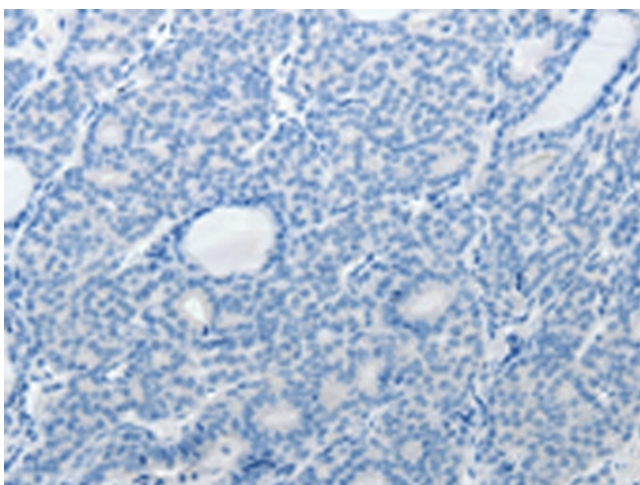
[View online »](#)

Protein Families: Transmembrane

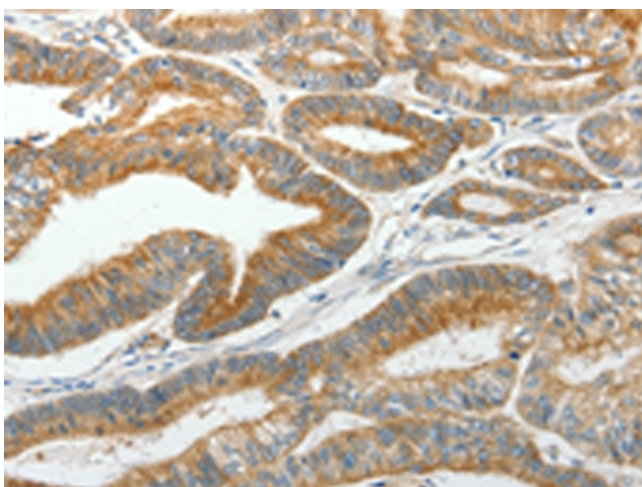
### Product images:



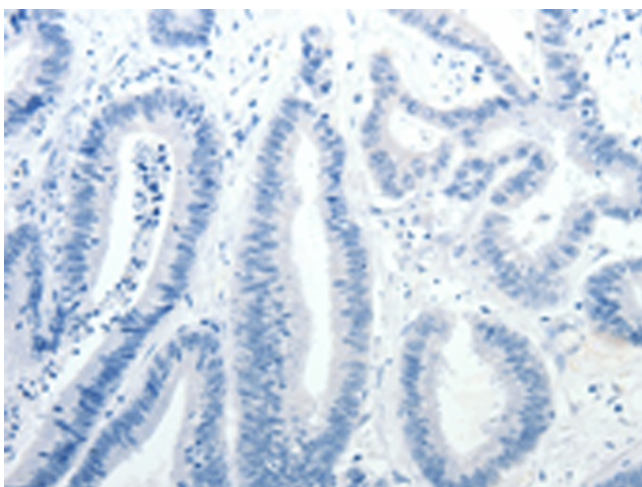
Immunohistochemistry of paraffin-embedded Human thyroid cancer tissue using [TA323976] (SLC12A4 Antibody) at dilution 1/30 (Original magnification:  $\times 200$ )



Immunohistochemistry of paraffin-embedded Human thyroid cancer tissue using [TA323976] (SLC12A4 Antibody) at dilution 1/30, treated with fusion protein. (Original magnification:  $\times 200$ )



Immunohistochemistry of paraffin-embedded Human colon cancer tissue using [TA323976] (SLC12A4 Antibody) at dilution 1/30 (Original magnification:  $\times 200$ )



Immunohistochemistry of paraffin-embedded Human colon cancer tissue using [TA323976] (SLC12A4 Antibody) at dilution 1/30, treated with fusion protein. (Original magnification:  $\times 200$ )