

## Product datasheet for **TA323971**

### DISC1 Rabbit Polyclonal Antibody

#### Product data:

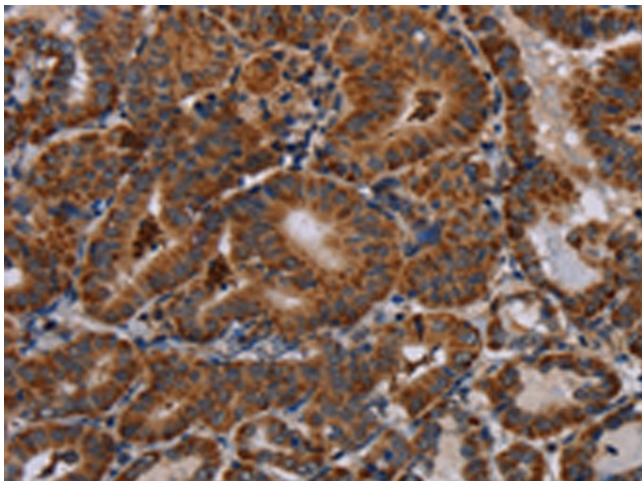
Product Type:	Primary Antibodies
Applications:	IHC
Recommended Dilution:	IHC: 50-200 Positive control: Human thyroid cancer Predicted cell location: Cytoplasm
Reactivity:	Human
Host:	Rabbit
Isotype:	IgG
Clonality:	Polyclonal
Immunogen:	Synthetic peptide corresponding to a region derived from 737-750 amino acids of Human disrupted in schizophrenia 1
Formulation:	PBS pH7.3, 0.05% NaN <sub>3</sub> , 50% glycerol
Concentration:	lot specific
Purification:	Antigen affinity purification
Conjugation:	Unconjugated
Storage:	Store at -20°C as received.
Stability:	Stable for 12 months from date of receipt.
Predicted Protein Size:	60 kDa
Gene Name:	disrupted in schizophrenia 1
Database Link:	<a href="#">NP_001158017</a> <a href="#">Entrez Gene 27185 Human</a> <a href="#">Q9NRI5</a>
Background:	This gene encodes a protein with multiple coiled coil motifs which is located in the nucleus; cytoplasm and mitochondria. The protein is involved in neurite outgrowth and cortical development through its interaction with other proteins. This gene is disrupted in a t(1;11) (q42.1;q14.3) translocation which segregates with schizophrenia and related psychiatric disorders in a large Scottish family. Alternate transcriptional splice variants; encoding different isoforms; have been characterized.



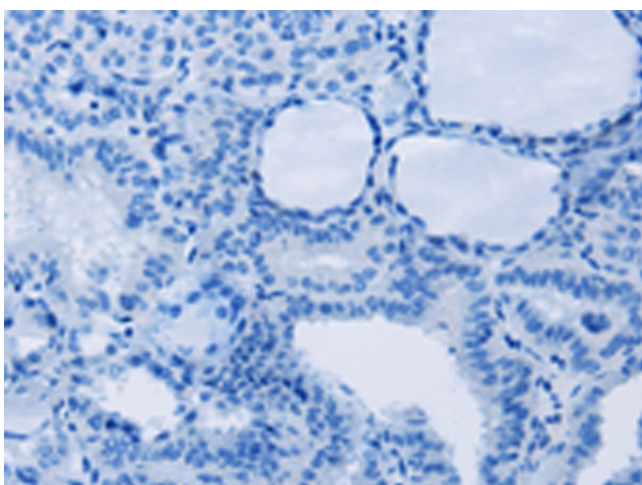
[View online »](#)

Synonyms: C1orf136; SCZD9

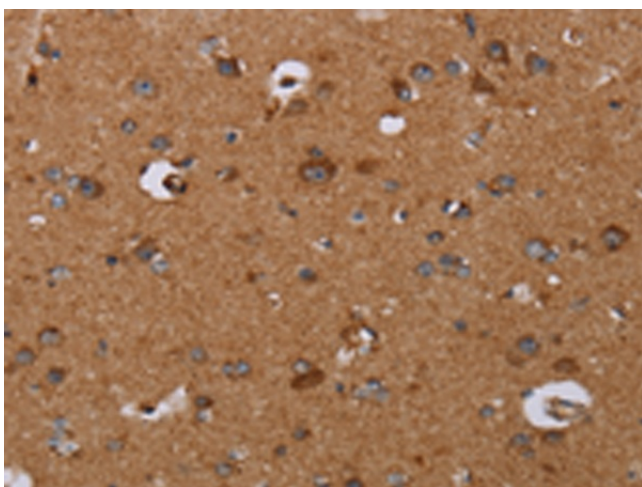
### Product images:



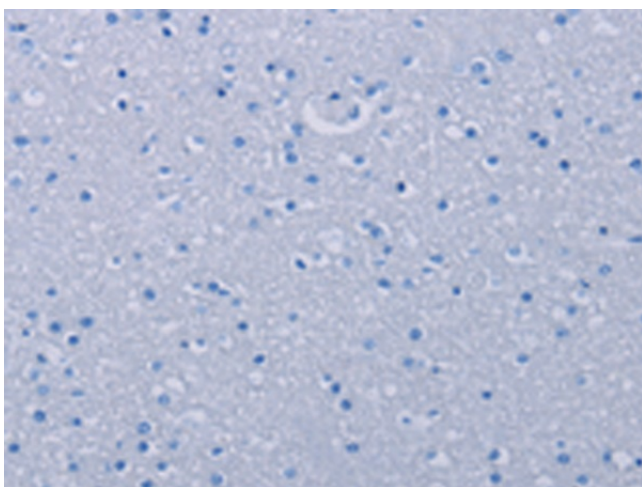
Immunohistochemistry of paraffin-embedded Human thyroid cancer tissue using TA323971 (DISC1 Antibody) at dilution 1/30 (Original magnification:  $\times 200$ )



Immunohistochemistry of paraffin-embedded Human thyroid cancer tissue using TA323971 (DISC1 Antibody) at dilution 1/30, treated with synthetic peptide. (Original magnification:  $\times 200$ )



Immunohistochemistry of paraffin-embedded Human brain tissue using TA323971 (DISC1 Antibody) at dilution 1/30 (Original magnification: ×200)



Immunohistochemistry of paraffin-embedded Human brain tissue using TA323971 (DISC1 Antibody) at dilution 1/30, treated with synthetic peptide. (Original magnification: ×200)