

## Product datasheet for **TA323968**

### **AADACL1 (NCEH1) Rabbit Polyclonal Antibody**

#### **Product data:**

Product Type:	Primary Antibodies
Applications:	IHC, WB
Recommended Dilution:	WB: 1000-5000 WB positive control: Mouse kidney and heart tissue IHC: 100-300 Positive control: Human thyroid cancer Predicted cell location: Cytoplasm
Reactivity:	Human, Mouse, Rat
Host:	Rabbit
Isotype:	IgG
Clonality:	Polyclonal
Immunogen:	Fusion protein corresponding to C terminal 250 amino acids of human neutral cholesterol ester hydrolase 1
Formulation:	PBS pH7.3, 0.05% NaN <sub>3</sub> , 50% glycerol
Concentration:	lot specific
Purification:	Antigen affinity purification
Conjugation:	Unconjugated
Storage:	Store at -20°C as received.
Stability:	Stable for 12 months from date of receipt.
Predicted Protein Size:	46 kDa
Gene Name:	neutral cholesterol ester hydrolase 1
Database Link:	<a href="#">NP_001139748</a> <a href="#">Entrez Gene 294930 Rat</a> <a href="#">Entrez Gene 320024 Mouse</a> <a href="#">Entrez Gene 57552 Human</a> <a href="#">Q6PIU2</a>



[View online »](#)

**Background:**

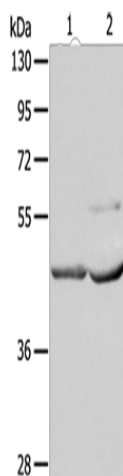
Neutral cholesterol ester hydrolase 1 (NCEH) also known as arylacetamide deacetylase-like 1 (AADACL1) or KIAA1363 is an enzyme that in humans is encoded by the NCEH1 gene. NCEH is an enzyme located in the endoplasmic reticulum. NCEH hydrolyzes 2-acetyl monoalkylglycerol ether, as part of an enzymatic pathway regulating the levels of platelet activating factor and lysophospholipids that may be involved in cancer development.

**Synonyms:**

AADACL1; NCEH

**Protein Families:**

Transmembrane

**Product images:**


Gel: 10% SDS-PAGE

Lysate: 40 µg

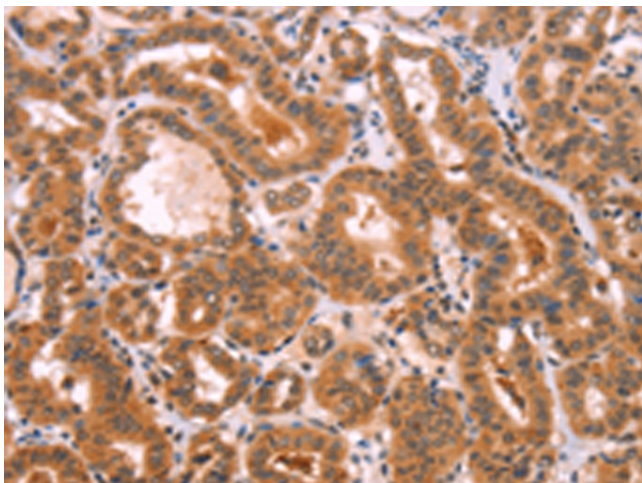
Lane 1-2: Mouse kidney tissue

Mouse heart tissue

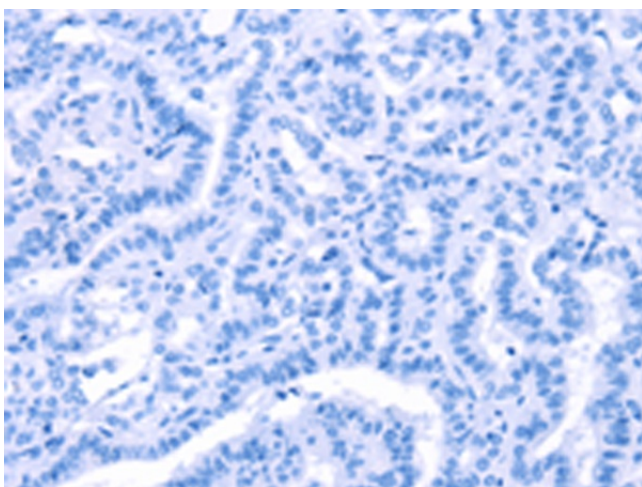
Primary antibody: TA323968 (NCEH1 Antibody) at dilution 1/1350

Secondary antibody: Goat anti rabbit IgG at 1/8000 dilution

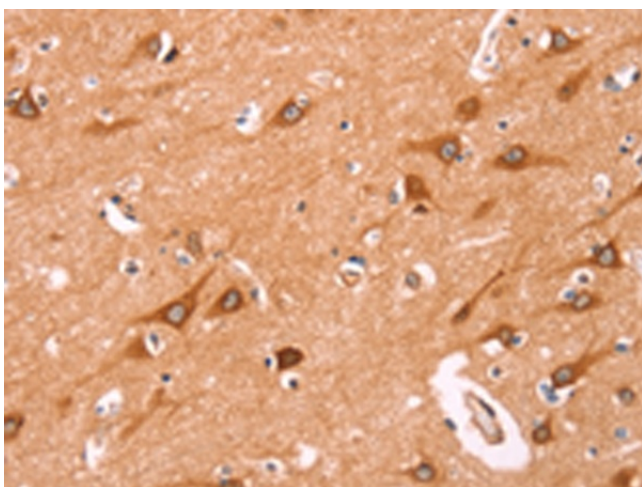
Exposure time: 30 seconds



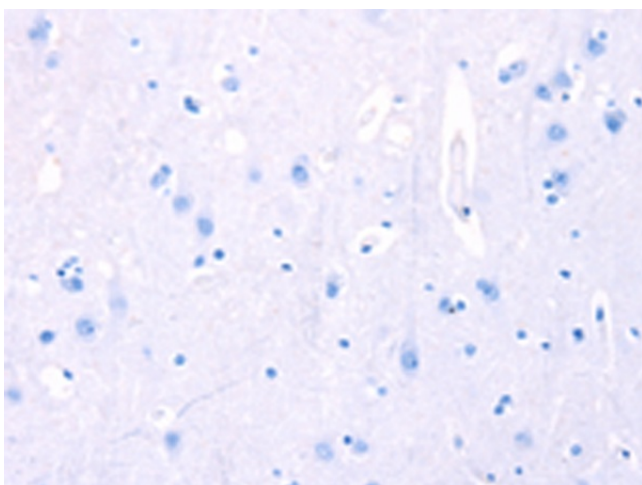
Immunohistochemistry of paraffin-embedded Human thyroid cancer tissue using TA323968 (NCEH1 Antibody) at dilution 1/80 (Original magnification: ×200)



Immunohistochemistry of paraffin-embedded Human thyroid cancer tissue using TA323968 (NCEH1 Antibody) at dilution 1/80, treated with fusion protein. (Original magnification: ×200)



Immunohistochemistry of paraffin-embedded Human brain tissue using TA323968 (NCEH1 Antibody) at dilution 1/80 (Original magnification: ×200)



Immunohistochemistry of paraffin-embedded Human brain tissue using TA323968 (NCEH1 Antibody) at dilution 1/80, treated with fusion protein. (Original magnification: ×200)