

Product datasheet for **TA323967S**

AADACL1 (NCEH1) Rabbit Polyclonal Antibody

Product data:

Product Type:	Primary Antibodies
Applications:	IHC, WB
Recommended Dilution:	WB: 1000-5000 WB positive control: Mouse kidney and heart tissue IHC: 100-300 Positive control: Human thyroid cancer Predicted cell location: Cytoplasm
Reactivity:	Human, Mouse, Rat
Host:	Rabbit
Isotype:	IgG
Clonality:	Polyclonal
Immunogen:	Fusion protein corresponding to C terminal 250 amino acids of human neutral cholesterol ester hydrolase 1
Formulation:	PBS pH7.3, 0.05% NaN ₃ , 50% glycerol
Purification:	Antigen affinity purification
Conjugation:	Unconjugated
Storage:	Store at -20°C as received.
Stability:	Stable for 12 months from date of receipt.
Predicted Protein Size:	46 kDa
Gene Name:	neutral cholesterol ester hydrolase 1
Database Link:	NP_001139748 Entrez Gene 294930 RatEntrez Gene 320024 MouseEntrez Gene 57552 Human Q6PIU2
Background:	Neutral cholesterol ester hydrolase 1?(NCEH) also known as?arylacetamide deacetylase-like 1? (AADACL1) or?KIAA1363?is an?enzyme?that in humans is encoded by the?NCEH1?gene. NCEH is an enzyme located in the endoplasmic reticulum. NCEH hydrolyzes 2-acetyl monoalkylglycerol ether, as part of an enzymatic pathway regulating the levels of platelet activating factor and lysophospholipids that may be involved in cancer development.

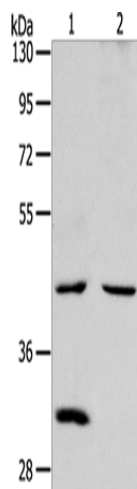


[View online »](#)

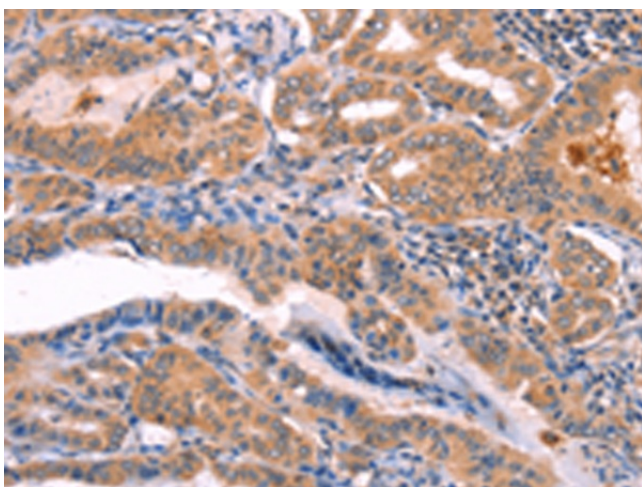
Synonyms: AADACL1; NCEH

Protein Families: Transmembrane

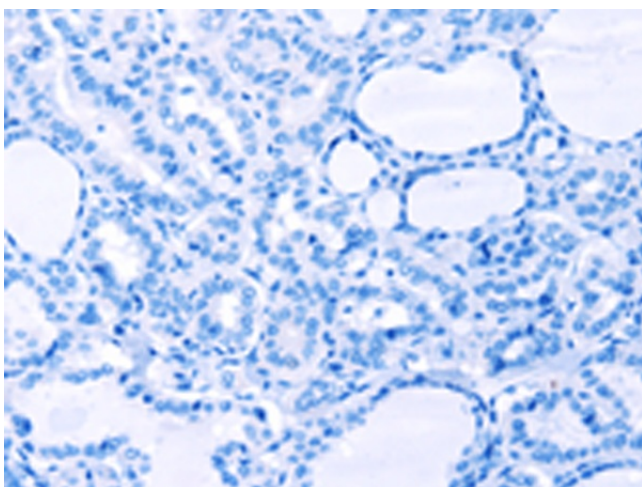
Product images:



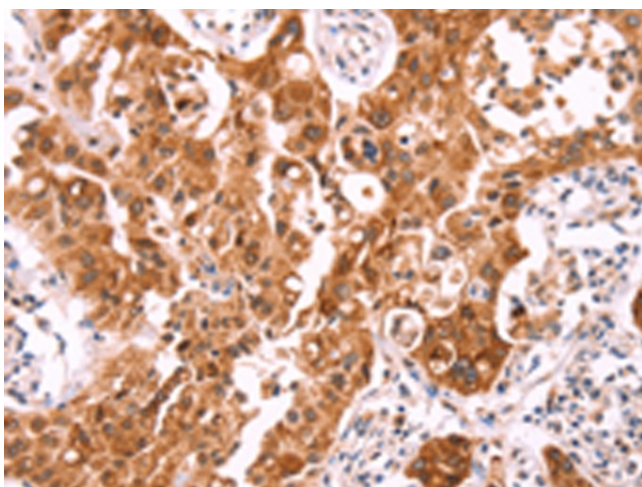
Gel: 10%SDS-PAGE
Lysate: 40 µg
Lane 1-2: Mouse kidney tissue
Mouse heart tissue
Primary antibody: [TA323967] (NCEH1 Antibody)
at dilution 1/1300
Secondary antibody: Goat anti rabbit IgG at
1/8000 dilution
Exposure time: 2 minutes



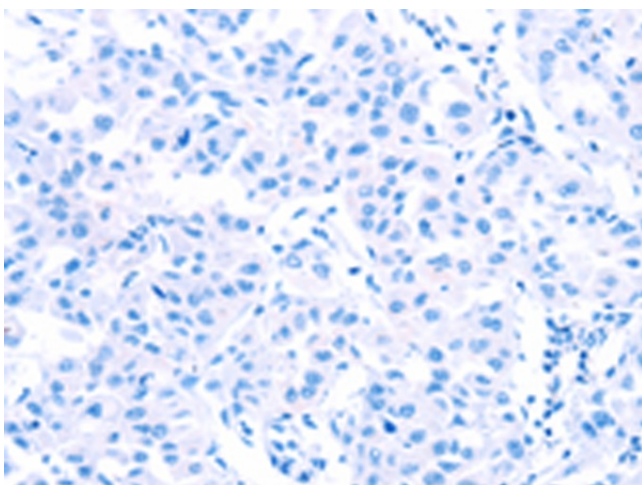
Immunohistochemistry of paraffin-embedded
Human thyroid cancer tissue using [TA323967]
(NCEH1 Antibody) at dilution 1/80 (Original
magnification: ×200)



Immunohistochemistry of paraffin-embedded Human thyroid cancer tissue using [TA323967] (NCEH1 Antibody) at dilution 1/80, treated with fusion protein. (Original magnification: $\times 200$)



Immunohistochemistry of paraffin-embedded Human lung cancer tissue using [TA323967] (NCEH1 Antibody) at dilution 1/80 (Original magnification: $\times 200$)



Immunohistochemistry of paraffin-embedded Human lung cancer tissue using [TA323967] (NCEH1 Antibody) at dilution 1/80, treated with fusion protein. (Original magnification: $\times 200$)