

Product datasheet for **TA323966**

CCR3 Rabbit Polyclonal Antibody

Product data:

Product Type:	Primary Antibodies
Applications:	IHC, WB
Recommended Dilution:	WB: 200-1000 WB positive control: SKOV3 cells IHC: 50-200 Positive control: Human lung cancer Predicted cell location: Cytoplasm
Reactivity:	Human
Host:	Rabbit
Isotype:	IgG
Clonality:	Polyclonal
Immunogen:	Synthetic peptide corresponding to a region derived from 10-25 amino acids of human chemokine (C-C motif) receptor 3
Formulation:	PBS pH7.3, 0.05% NaN ₃ , 50% glycerol
Concentration:	lot specific
Purification:	Antigen affinity purification
Conjugation:	Unconjugated
Storage:	Store at -20°C as received.
Stability:	Stable for 12 months from date of receipt.
Predicted Protein Size:	43 kDa
Gene Name:	C-C motif chemokine receptor 3
Database Link:	NP_847898 Entrez Gene 1232 Human P51677



[View online »](#)

Background:

The protein encoded by this gene is a receptor for C-C type chemokines. It belongs to family 1 of the G protein-coupled receptors. This receptor binds and responds to a variety of chemokines; including eotaxin (CCL11); eotaxin-3 (CCL26); MCP-3 (CCL7); MCP-4 (CCL13); and RANTES (CCL5). It is highly expressed in eosinophils and basophils; and is also detected in TH1 and TH2 cells; as well as in airway epithelial cells. This receptor may contribute to the accumulation and activation of eosinophils and other inflammatory cells in the allergic airway. It is also known to be an entry co-receptor for HIV-1. This gene and seven other chemokine receptor genes form a chemokine receptor gene cluster on the chromosomal region 3p21. Alternatively spliced transcript variants have been described.

Synonyms:

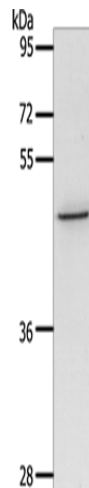
CC-CCR-3; CD193; CKR3; CMKBR3

Protein Families:

Druggable Genome, GPCR, Transmembrane

Protein Pathways:

Chemokine signaling pathway, Cytokine-cytokine receptor interaction

Product images:

Gel: 10%SDS-PAGE

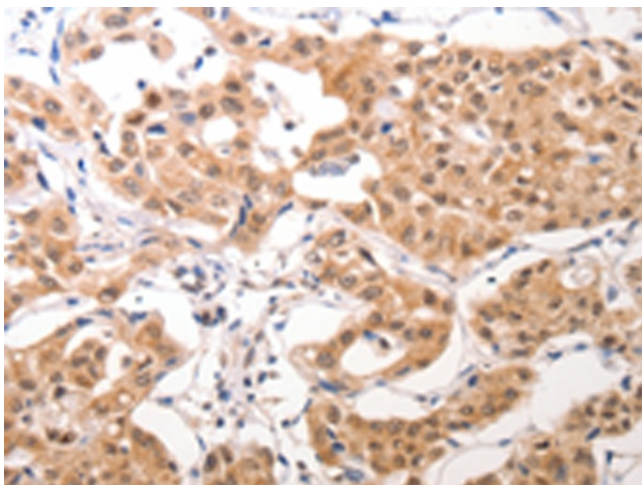
Lysate: 40 µg

Lane: SKOV3 cells

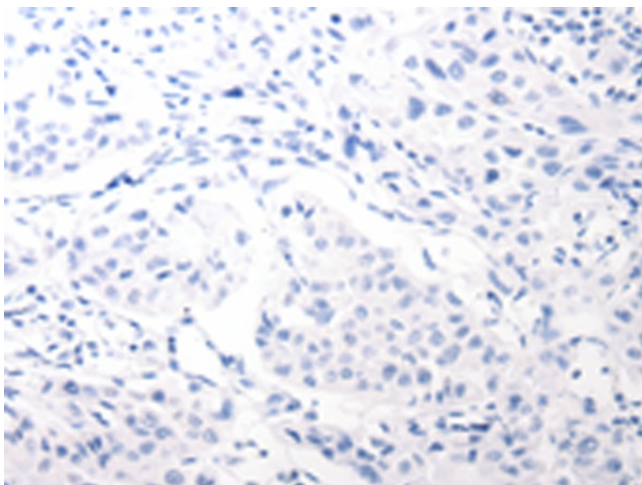
Primary antibody: TA323966 (CCR3 Antibody) at dilution 1/300

Secondary antibody: Goat anti rabbit IgG at 1/8000 dilution

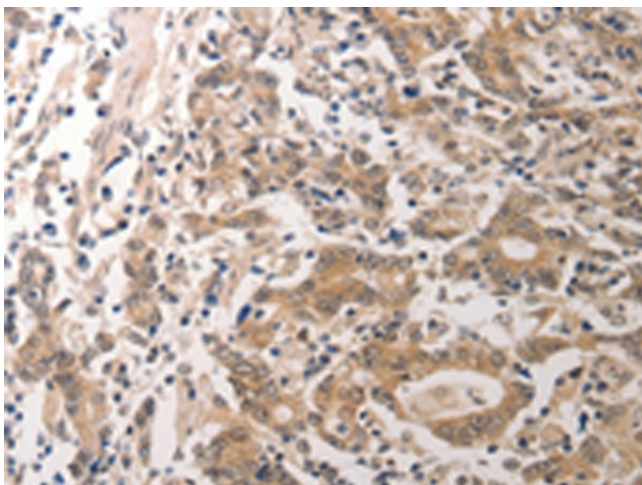
Exposure time: 1 minute



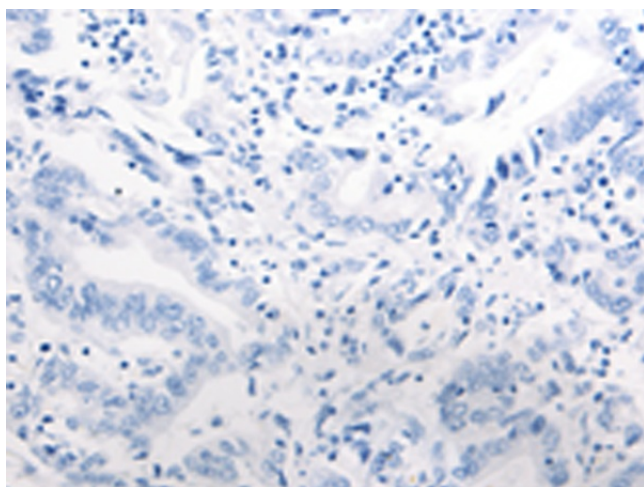
Immunohistochemistry of paraffin-embedded Human lung cancer tissue using TA323966 (CCR3 Antibody) at dilution 1/40 (Original magnification: $\times 200$)



Immunohistochemistry of paraffin-embedded Human lung cancer tissue using TA323966 (CCR3 Antibody) at dilution 1/40, treated with synthetic peptide. (Original magnification: $\times 200$)



Immunohistochemistry of paraffin-embedded Human gastric cancer tissue using TA323966 (CCR3 Antibody) at dilution 1/40 (Original magnification: $\times 200$)



Immunohistochemistry of paraffin-embedded Human gastric cancer tissue using TA323966 (CCR3 Antibody) at dilution 1/40, treated with synthetic peptide. (Original magnification: ×200)