

Product datasheet for **TA323963**

SLC25A11 Rabbit Polyclonal Antibody

Product data:

Product Type:	Primary Antibodies
Applications:	IHC, WB
Recommended Dilution:	WB: 500-2000 WB positive control: Human lymphoma tissue IHC: 25-100 Positive control: Human esophagus cancer Predicted cell location: Cytoplasm
Reactivity:	Human, Mouse, Rat
Host:	Rabbit
Isotype:	IgG
Clonality:	Polyclonal
Immunogen:	Fusion protein corresponding to a region derived from 117-314 amino acids of human solute carrier family 25 (mitochondrial carrier; oxoglutarate carrier), member 11
Formulation:	PBS pH7.3, 0.05% NaN ₃ , 50% glycerol
Concentration:	lot specific
Purification:	Antigen affinity purification
Conjugation:	Unconjugated
Storage:	Store at -20°C as received.
Stability:	Stable for 12 months from date of receipt.
Predicted Protein Size:	34 kDa
Gene Name:	solute carrier family 25 member 11
Database Link:	NP_001158889 Entrez Gene 64201 Rat Entrez Gene 67863 Mouse Entrez Gene 8402 Human Q02978
Background:	The oxoglutarate/malate carrier transports 2-oxoglutarate across the inner membranes of mitochondria in an electroneutral exchange for malate or other dicarboxylic acids, and plays an important role in several metabolic processes, contains the malate-aspartate shuttle, the oxoglutarate/isocitrate shuttle, in gluconeogenesis from lactate, and in nitrogen metabolism.



[View online »](#)

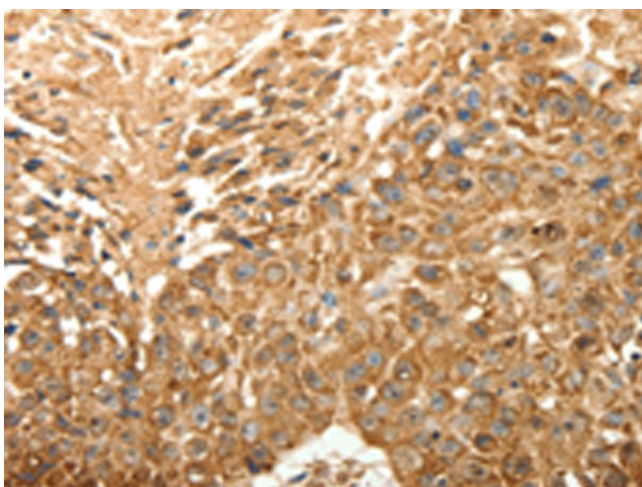
Synonyms: OGC; SLC20A4

Protein Families: Druggable Genome

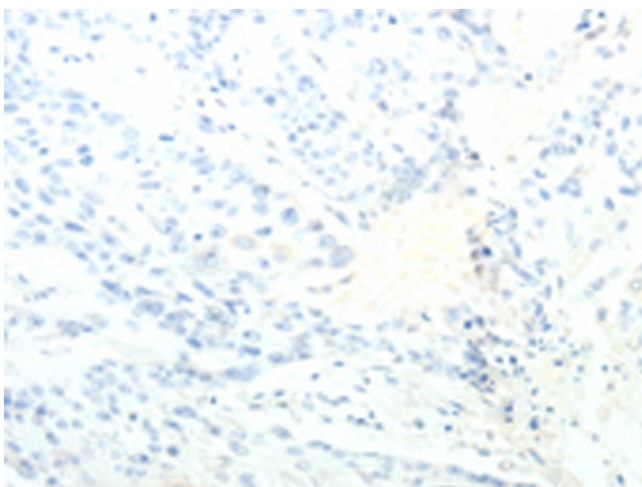
Product images:



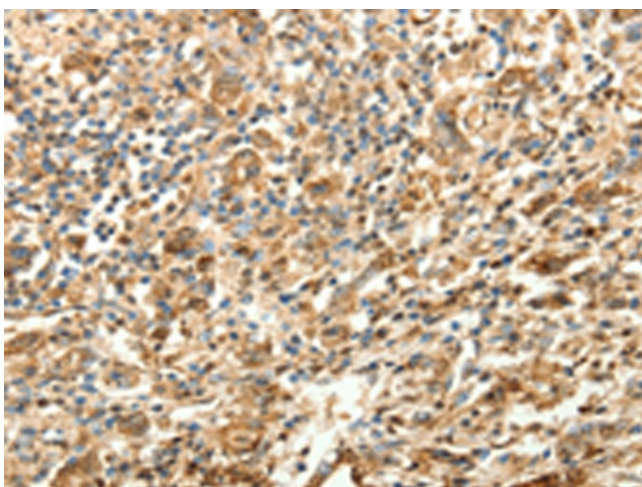
Gel: 12%SDS-PAGE
Lysate: 40 μ g
Lane: Human lymphoma tissue
Primary antibody: TA323963 (SLC25A11 Antibody)
at dilution 1/600
Secondary antibody: Goat anti rabbit IgG at
1/8000 dilution
Exposure time: 20 seconds



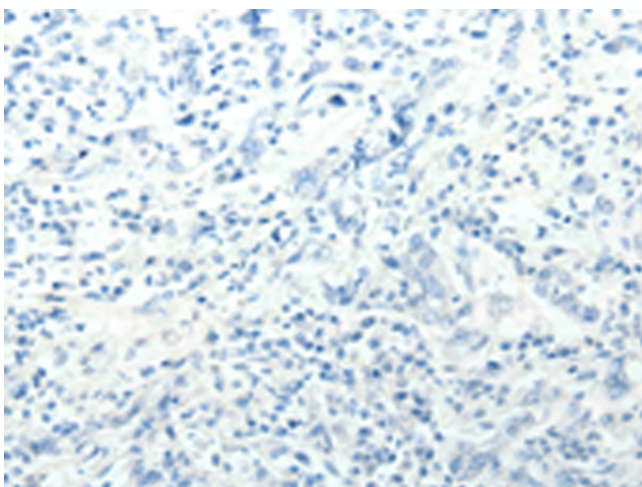
Immunohistochemistry of paraffin-embedded
Human esophagus cancer tissue using TA323963
(SLC25A11 Antibody) at dilution 1/30 (Original
magnification: \times 200)



Immunohistochemistry of paraffin-embedded Human esophagus cancer tissue using TA323963 (SLC25A11 Antibody) at dilution 1/30, treated with fusion protein. (Original magnification: ×200)



Immunohistochemistry of paraffin-embedded Human gastric cancer tissue using TA323963 (SLC25A11 Antibody) at dilution 1/30 (Original magnification: ×200)



Immunohistochemistry of paraffin-embedded Human gastric cancer tissue using TA323963 (SLC25A11 Antibody) at dilution 1/30, treated with fusion protein. (Original magnification: ×200)