

## Product datasheet for **TA323960**

### COX11 Rabbit Polyclonal Antibody

#### Product data:

Product Type:	Primary Antibodies
Applications:	IHC, WB
Recommended Dilution:	WB: 1000-5000 WB positive control: Mouse brain tissue IHC: 25-100 Positive control: Human stomach cancer Predicted cell location: Cytoplasm, Cell membrane
Reactivity:	Human, Mouse
Host:	Rabbit
Isotype:	IgG
Clonality:	Polyclonal
Immunogen:	Fusion protein corresponding to a region derived from 115-276 amino acids of human cytochrome c oxidase assembly homolog 11 (yeast)
Formulation:	PBS pH7.3, 0.05% NaN <sub>3</sub> , 50% glycerol
Concentration:	lot specific
Purification:	Antigen affinity purification
Conjugation:	Unconjugated
Storage:	Store at -20°C as received.
Stability:	Stable for 12 months from date of receipt.
Predicted Protein Size:	31 kDa
Gene Name:	COX11 cytochrome c oxidase copper chaperone
Database Link:	<a href="#">NP_001156333</a> <a href="#">Entrez Gene 69802 Mouse</a> <a href="#">Entrez Gene 1353 Human</a> <a href="#">Q9Y6N1</a>



[View online »](#)

**Background:**

Cytochrome c oxidase (COX); the terminal component of the mitochondrial respiratory chain; catalyzes the electron transfer from reduced cytochrome c to oxygen. This component is a heteromeric complex consisting of 3 catalytic subunits encoded by mitochondrial genes and multiple structural subunits encoded by nuclear genes. The mitochondrially-encoded subunits function in electron transfer; and the nuclear-encoded subunits may function in the regulation and assembly of the complex. This nuclear gene encodes a protein which is not a structural subunit; but may be a heme A biosynthetic enzyme involved in COX formation; according to the yeast mutant studies. However; the studies in *Rhodobacter sphaeroides* suggest that this gene is not required for heme A biosynthesis; but required for stable formation of the Cu(B) and magnesium centers of COX. This human protein is predicted to contain a transmembrane domain localized in the mitochondrial inner membrane. Multiple transcript variants encoding different isoforms have been found for this gene. A related pseudogene has been found on chromosome 6.?

**Synonyms:**

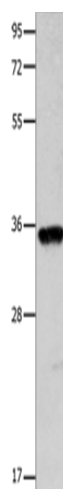
COX11P

**Protein Families:**

Transmembrane

**Protein Pathways:**

Metabolic pathways, Oxidative phosphorylation

**Product images:**

Gel: 10%SDS-PAGE

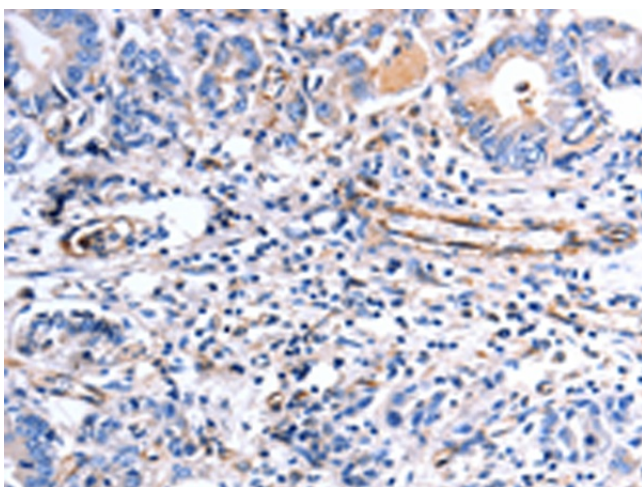
Lysate: 40 µg

Lane: Mouse brain tissue

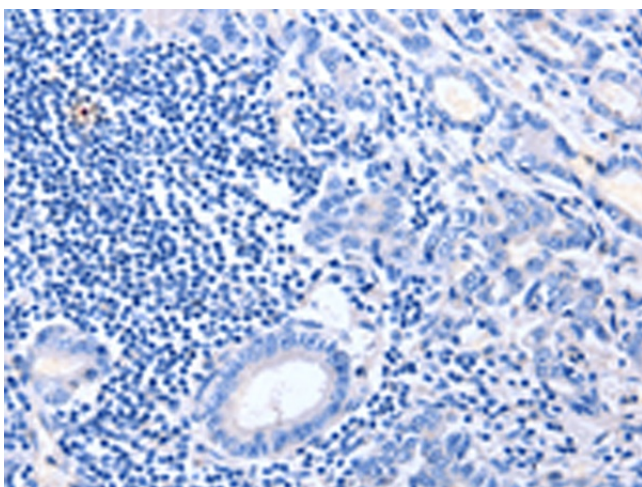
Primary antibody: TA323960 (COX11 Antibody) at dilution 1/600

Secondary antibody: Goat anti rabbit IgG at 1/8000 dilution

Exposure time: 15 seconds



Immunohistochemistry of paraffin-embedded Human stomach cancer tissue using TA323960 (COX11 Antibody) at dilution 1/30 (Original magnification:  $\times 200$ )



Immunohistochemistry of paraffin-embedded Human stomach cancer tissue using TA323960 (COX11 Antibody) at dilution 1/30, treated with fusion protein. (Original magnification:  $\times 200$ )