

## Product datasheet for **TA323958S**

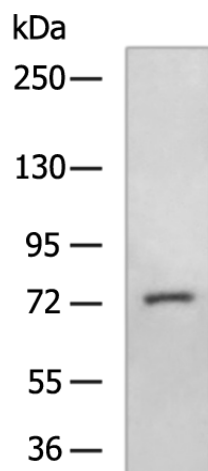
### AGBL3 Rabbit Polyclonal Antibody

#### Product data:

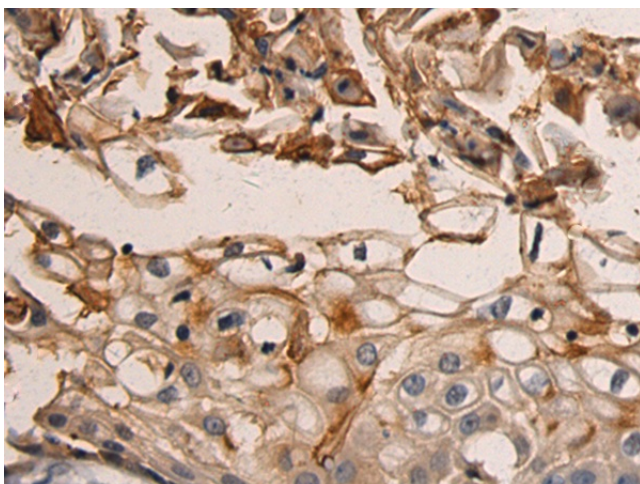
Product Type:	Primary Antibodies
Applications:	IHC, WB
Recommended Dilution:	WB: 500-2000 WB positive control: Mouse liver tissue lysate IHC: 50-200 Positive control: Human esophagus cancer Predicted cell location: Cytoplasm
Reactivity:	Human, Mouse
Host:	Rabbit
Isotype:	IgG
Clonality:	Polyclonal
Immunogen:	Fusion protein corresponding to C terminal 250 amino acids of human ATP/GTP binding protein-like 3
Formulation:	PBS pH7.3, 0.05% NaN <sub>3</sub> , 50% glycerol
Purification:	Antigen affinity purification
Conjugation:	Unconjugated
Storage:	Store at -20°C as received.
Stability:	Stable for 12 months from date of receipt.
Predicted Protein Size:	116 kDa
Gene Name:	ATP/GTP binding protein-like 3
Database Link:	<a href="#">NP_848658</a> <a href="#">Entrez Gene 76223 Mouse</a> <a href="#">Entrez Gene 340351 Human</a> <a href="#">Q8NEM8</a>
Background:	This protein belongs to the peptidase M14 family. It has a function in the processing of cytosolic proteins such as alpha-tubulin, which is known to be modified by the removal of a C-terminal tyrosine. Every subunit binds 1 zinc ion. It has high levels expression in digestive and blood/hematopoietic system, like intestine, urinary, kidney and bone marrow.
Synonyms:	CCP3



[View online »](#)

**Product images:**


Gel: 6%SDS-PAGE  
 Lysate: 40 µg  
 Lane: Mouse liver tissue lysate  
 Primary antibody: [TA323958] (AGBL3 Antibody)  
 at dilution 1/500  
 Secondary antibody: Goat anti rabbit IgG at  
 1/5000 dilution  
 Exposure time: 1 minute



Immunohistochemistry of paraffin-embedded  
 Human esophagus cancer tissue using  
 [TA323958] (AGBL3 Antibody) at dilution 1/60.  
 (Original magnification: ×200)