

Product datasheet for **TA323958**

AGBL3 Rabbit Polyclonal Antibody

Product data:

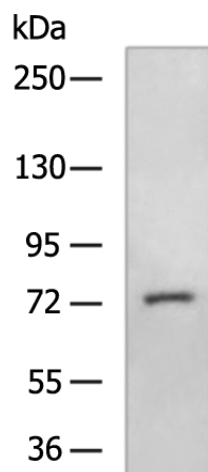
Product Type:	Primary Antibodies
Applications:	IHC, WB
Recommended Dilution:	WB: 500-2000 WB positive control: Mouse liver tissue lysate IHC: 50-200 Positive control: Human esophagus cancer Predicted cell location: Cytoplasm
Reactivity:	Human, Mouse
Host:	Rabbit
Isotype:	IgG
Clonality:	Polyclonal
Immunogen:	Fusion protein corresponding to C terminal 250 amino acids of human ATP/GTP binding protein-like 3
Formulation:	PBS pH7.3, 0.05% NaN ₃ , 50% glycerol
Concentration:	lot specific
Purification:	Antigen affinity purification
Conjugation:	Unconjugated
Storage:	Store at -20°C as received.
Stability:	Stable for 12 months from date of receipt.
Predicted Protein Size:	116 kDa
Gene Name:	ATP/GTP binding protein-like 3
Database Link:	NP_848658 Entrez Gene 76223 Mouse Entrez Gene 340351 Human Q8NEM8
Background:	This protein belongs to the peptidase M14 family. It has a function in the processing of cytosolic proteins such as alpha-tubulin, which is known to be modified by the removal of a C-terminal tyrosine. Every subunit binds 1 zinc ion. It has high levels expression in digestive and blood/hematopoietic system, like intestine, urinary, kidney and bone marrow.



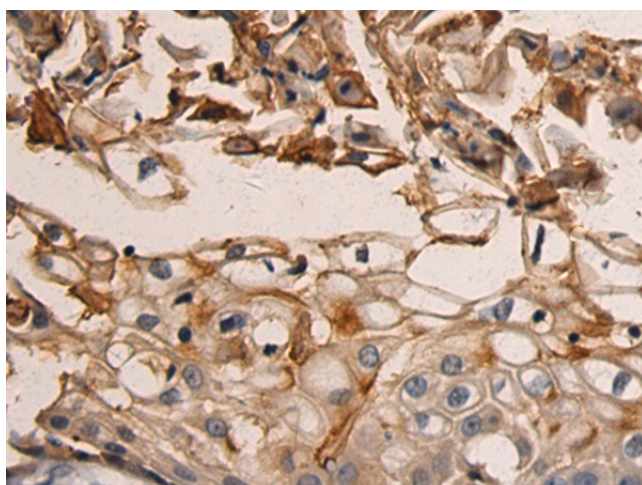
[View online »](#)

Synonyms: CCP3

Product images:



Gel: 6%SDS-PAGE
Lysate: 40 μ g
Lane: Mouse liver tissue lysate
Primary antibody: TA323958 (AGBL3 Antibody) at dilution 1/500
Secondary antibody: Goat anti rabbit IgG at 1/5000 dilution
Exposure time: 1 minute



Immunohistochemistry of paraffin-embedded Human esophagus cancer tissue using TA323958 (AGBL3 Antibody) at dilution 1/60. (Original magnification: \times 200)