

Product datasheet for **TA323957S**

AGBL3 Rabbit Polyclonal Antibody

Product data:

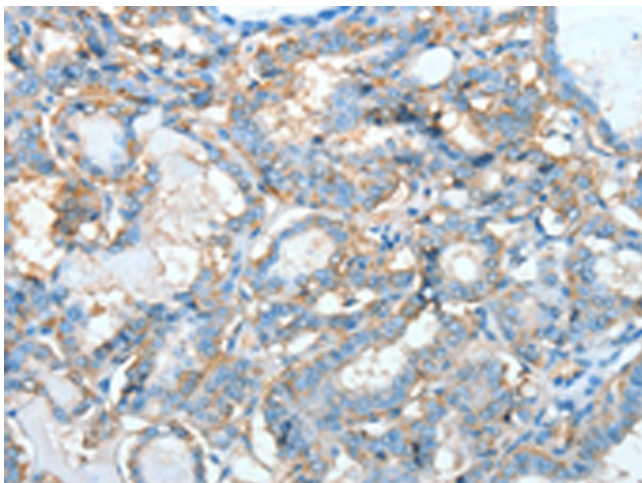
Product Type:	Primary Antibodies
Applications:	IHC
Recommended Dilution:	IHC: 25-100 Positive control: Human thyroid cancer Predicted cell location: Cytoplasm
Reactivity:	Human, Mouse
Host:	Rabbit
Isotype:	IgG
Clonality:	Polyclonal
Immunogen:	Fusion protein corresponding to C terminal 250 amino acids of human ATP/GTP binding protein-like 3
Formulation:	PBS pH7.3, 0.05% NaN ₃ , 50% glycerol
Purification:	Antigen affinity purification
Conjugation:	Unconjugated
Storage:	Store at -20°C as received.
Stability:	Stable for 12 months from date of receipt.
Gene Name:	ATP/GTP binding protein-like 3
Database Link:	NP_848658 Entrez Gene 76223 Mouse Entrez Gene 340351 Human Q8NEM8
Background:	CCP3 (cytosolic carboxypeptidase 3), also known as AGBL3 (ATP/GTP-binding protein-like 3), is a 1,001 amino acid cytosolic protein that exists as four alternatively spliced isoforms and belongs to the peptidase M14 family. As a metallo-carboxypeptidase, CCP3 binds one zinc ion per subunit and may play a role in the processing of tubulin. The gene that encodes CCP3 consists of approximately 161,457 bases and maps to human chromosome 7q33. Housing over 1,000 genes, chromosome 7 comprises nearly 5% of the human genome. Chromosome 7 has been linked to Osteogenesis imperfecta, Pendred syndrome, Lissencephaly, Citrullinemia and Shwachman-Diamond syndrome.



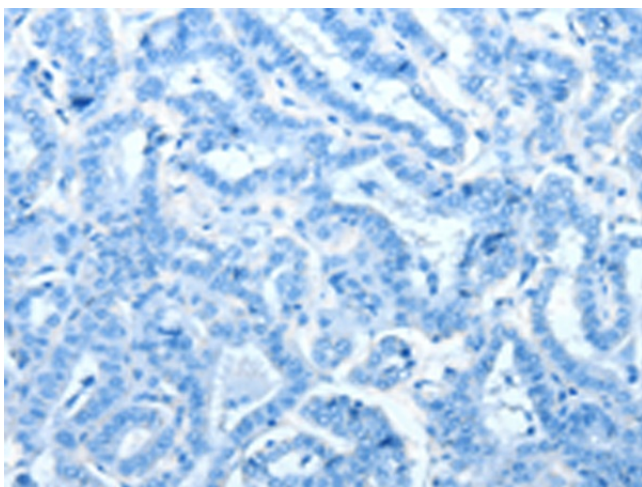
[View online »](#)

Synonyms: CCP3

Product images:



Immunohistochemistry of paraffin-embedded Human thyroid cancer tissue using [TA323957] (AGBL3 Antibody) at dilution 1/45 (Original magnification: ×200)



Immunohistochemistry of paraffin-embedded Human thyroid cancer tissue using [TA323957] (AGBL3 Antibody) at dilution 1/45, treated with fusion protein. (Original magnification: ×200)