

## Product datasheet for **TA323957**

### AGBL3 Rabbit Polyclonal Antibody

#### Product data:

Product Type:	Primary Antibodies
Applications:	IHC
Recommended Dilution:	IHC: 25-100 Positive control: Human thyroid cancer Predicted cell location: Cytoplasm
Reactivity:	Human, Mouse
Host:	Rabbit
Isotype:	IgG
Clonality:	Polyclonal
Immunogen:	Fusion protein corresponding to C terminal 250 amino acids of human ATP/GTP binding protein-like 3
Formulation:	PBS pH7.3, 0.05% NaN <sub>3</sub> , 50% glycerol
Concentration:	lot specific
Purification:	Antigen affinity purification
Conjugation:	Unconjugated
Storage:	Store at -20°C as received.
Stability:	Stable for 12 months from date of receipt.
Gene Name:	ATP/GTP binding protein-like 3
Database Link:	<a href="#">NP_848658</a> <a href="#">Entrez Gene 76223 Mouse</a> <a href="#">Entrez Gene 340351 Human</a> <a href="#">Q8NEM8</a>



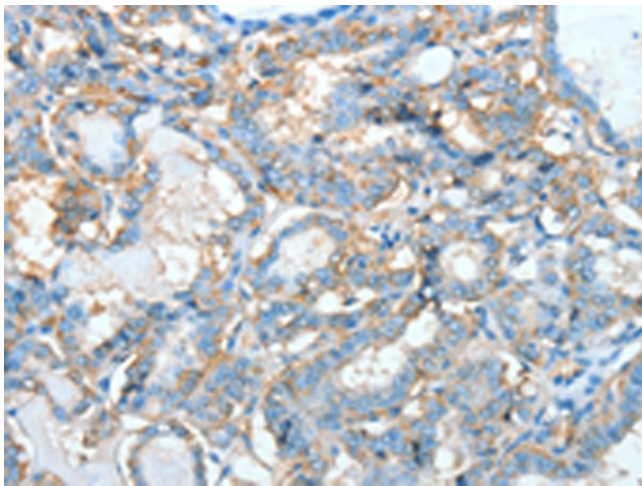
[View online »](#)

**Background:**

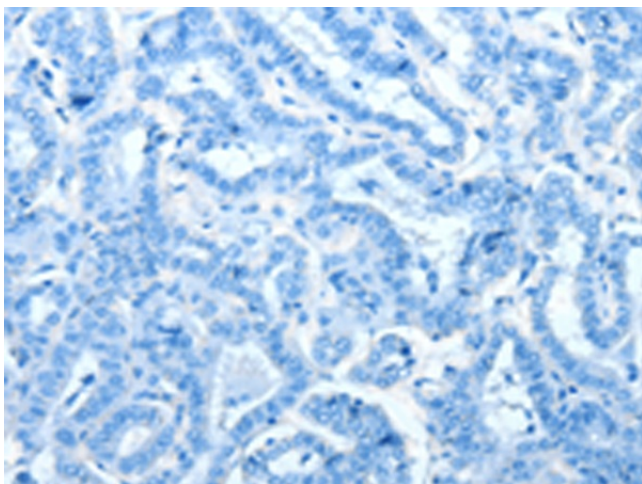
CCP3 (cytosolic carboxypeptidase 3), also known as AGBL3 (ATP/GTP-binding protein-like 3), is a 1,001 amino acid cytosolic protein that exists as four alternatively spliced isoforms and belongs to the peptidase M14 family. As a metalloprotease, CCP3 binds one zinc ion per subunit and may play a role in the processing of tubulin. The gene that encodes CCP3 consists of approximately 161,457 bases and maps to human chromosome 7q33. Housing over 1,000 genes, chromosome 7 comprises nearly 5% of the human genome. Chromosome 7 has been linked to Osteogenesis imperfecta, Pendred syndrome, Lissencephaly, Citrullinemia and Shwachman-Diamond syndrome.

**Synonyms:**

CCP3

**Product images:**

Immunohistochemistry of paraffin-embedded Human thyroid cancer tissue using TA323957 (AGBL3 Antibody) at dilution 1/45 (Original magnification: x200)



Immunohistochemistry of paraffin-embedded Human thyroid cancer tissue using TA323957 (AGBL3 Antibody) at dilution 1/45, treated with fusion protein. (Original magnification: x200)