

Product datasheet for **TA323956**

Ki67 (MKI67) Rabbit Polyclonal Antibody

Product data:

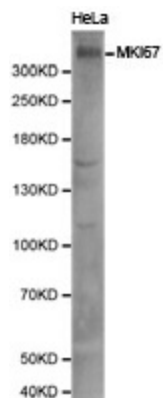
Product Type:	Primary Antibodies
Applications:	WB
Recommended Dilution:	WB: 1:500-2000
Reactivity:	Human
Host:	Rabbit
Isotype:	IgG
Clonality:	Polyclonal
Immunogen:	Fusion protein corresponding to a region derived from 1200-1300 amino acids of human antigen identified by monoclonal antibody Ki-67
Formulation:	PBS pH7.3, 0.05% NaN ₃ , 50% glycerol
Concentration:	lot specific
Purification:	Antigen affinity purification
Conjugation:	Unconjugated
Storage:	Store at -20°C as received.
Stability:	Stable for 12 months from date of receipt.
Predicted Protein Size:	359 kDa
Gene Name:	marker of proliferation Ki-67
Database Link:	NP_001139438 Entrez Gene 4288 Human P46013
Background:	Ki-67, named after the location where it was discovered (Kiel University, Germany), is a nuclear nonhistone protein that is universally expressed among proliferating cells and absent in quiescent cells. Ki-67 detects proliferating cells in G1, S, G2, and mitosis, but not in the G0 resting phase. Research studies have shown that high levels of Ki-67 are associated with poorer breast cancer survival. Research studies have explored the use of Ki-67, along with other markers, as potential prognostic or predictive markers in breast cancer and other malignant diseases.
Synonyms:	KIA; MIB-; MIB-1; PPP1R105



[View online »](#)

Protein Families: Druggable Genome, ES Cell Differentiation/IPS

Product images:



Predicted band size: 359 kDa. Positive control: HeLa cell lysate. Recommended dilution: 1/500-2000. (Gel: 6%SDS-PAGE Lysate: 30 ug Primary antibody: 1/350 dilution Secondary antibody: Goat anti Rabbit IgG - H&L (HRP) at 1/10000 dilution Exposure time: 1 minute)