

## Product datasheet for **TA323955**

### MMP1 Rabbit Polyclonal Antibody

#### Product data:

Product Type:	Primary Antibodies
Applications:	IHC, WB
Recommended Dilution:	WB: 500-2000 WB positive control: Raji, Hepg2, A431, 293T, Jurkat and A375 cell lysates IHC: 50-200 Positive control: Human liver cancer Predicted cell location: Cytoplasm
Reactivity:	Human
Host:	Rabbit
Isotype:	IgG
Clonality:	Polyclonal
Immunogen:	Fusion protein corresponding to a region derived from 12-200 amino acids of human matrix metalloproteinase 1 (interstitial collagenase)
Formulation:	PBS pH7.3, 0.05% NaN <sub>3</sub> , 50% glycerol
Concentration:	lot specific
Purification:	Antigen affinity purification
Conjugation:	Unconjugated
Storage:	Store at -20°C as received.
Stability:	Stable for 12 months from date of receipt.
Predicted Protein Size:	54 kDa
Gene Name:	matrix metalloproteinase 1
Database Link:	<a href="#">NP_001139410</a> <a href="#">Entrez Gene 4312 Human</a> <a href="#">P03956</a>



[View online »](#)

**Background:**

Proteins of the matrix metalloproteinase (MMP) family are involved in the breakdown of extracellular matrix in normal physiological processes, such as embryonic development, reproduction, and tissue remodeling, as well as in disease processes, such as arthritis and metastasis. Most MMP's are secreted as inactive proproteins which are activated when cleaved by extracellular proteinases. This gene encodes a secreted enzyme which breaks down the interstitial collagens, types I, II, and III. The gene is part of a cluster of MMP genes which localize to chromosome 11q22.3. Alternative splicing results in multiple transcript variants.

**Synonyms:**

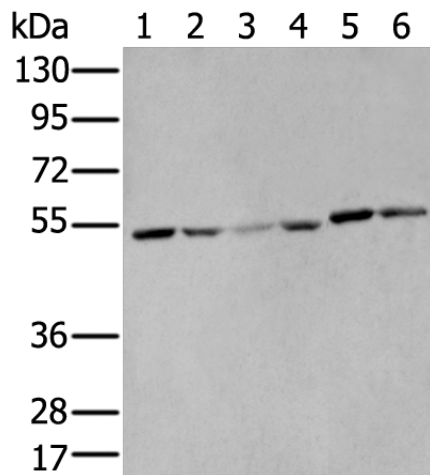
CLG; CLGN

**Protein Families:**

Druggable Genome, Protease, Secreted Protein

**Protein Pathways:**

Bladder cancer, Pathways in cancer, PPAR signaling pathway

**Product images:**


Gel: 8%SDS-PAGE

Lysate: 40 µg

Lane 1-6: Raji

Hepg2

A431

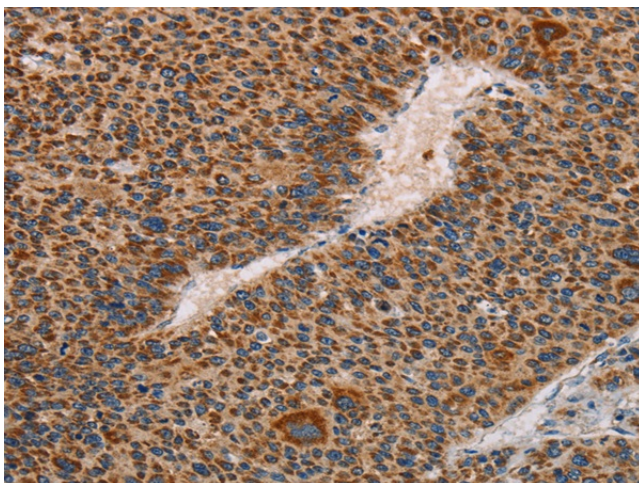
293T

Jurkat and A375 cell lysates

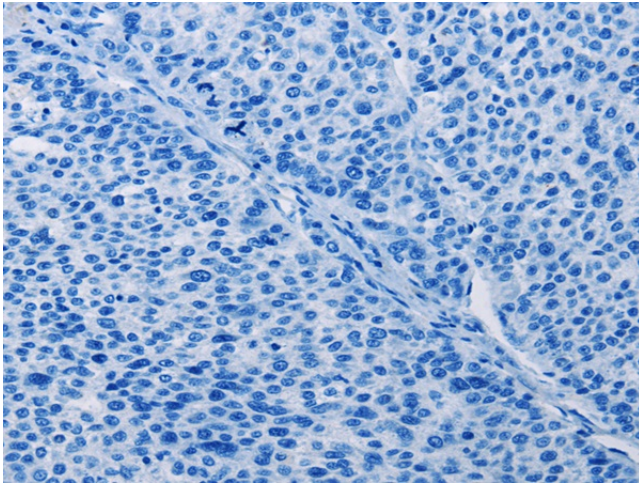
Primary antibody: TA323955 (MMP1 Antibody) at dilution 1/400

Secondary antibody: Goat anti rabbit IgG at 1/8000 dilution

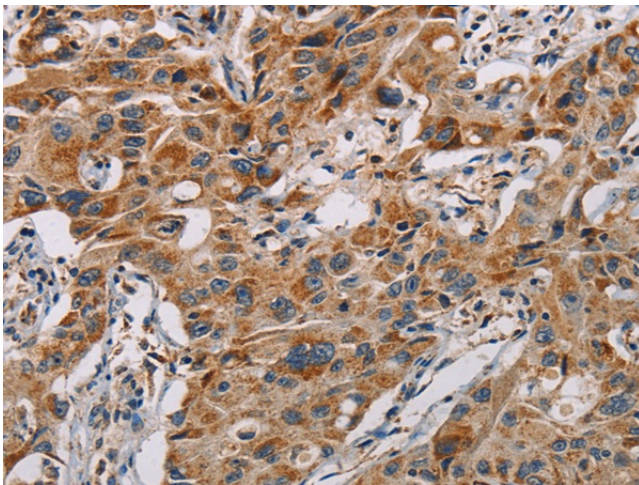
Exposure time: 10 seconds



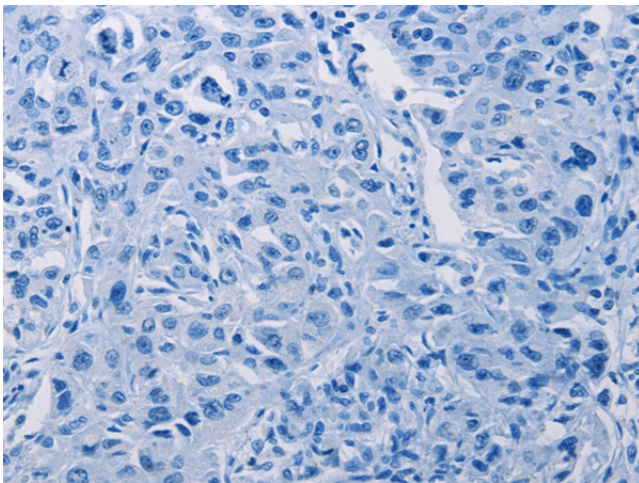
Immunohistochemistry of paraffin-embedded Human liver cancer tissue using TA323955 (MMP1 Antibody) at dilution 1/60 (Original magnification: ×200)



Immunohistochemistry of paraffin-embedded Human liver cancer tissue using TA323955 (MMP1 Antibody) at dilution 1/60, treated with fusion protein. (Original magnification:  $\times 200$ )



Immunohistochemistry of paraffin-embedded Human lung cancer tissue using TA323955 (MMP1 Antibody) at dilution 1/60 (Original magnification:  $\times 200$ )



Immunohistochemistry of paraffin-embedded Human lung cancer tissue using TA323955 (MMP1 Antibody) at dilution 1/60, treated with fusion protein. (Original magnification:  $\times 200$ )