

Product datasheet for **TA323953S**

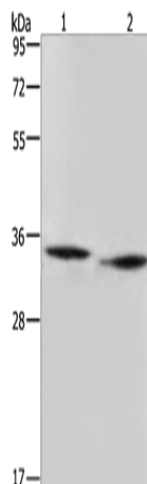
AMDHD2 Rabbit Polyclonal Antibody

Product data:

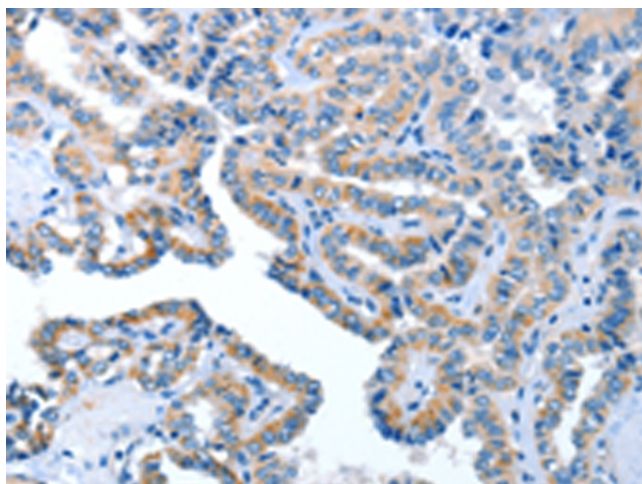
Product Type:	Primary Antibodies
Applications:	IHC, WB
Recommended Dilution:	WB: 200-1000 WB positive control: mouse heart and liver tissue IHC: 50-200 Positive control: Human thyroid cancer Predicted cell location: Cytoplasm
Reactivity:	Human, Mouse, Rat
Host:	Rabbit
Isotype:	IgG
Clonality:	Polyclonal
Immunogen:	Fusion protein corresponding to C terminal 250 amino acids of human amidohydrolase domain containing 2
Formulation:	PBS pH7.3, 0.05% NaN ₃ , 50% glycerol
Purification:	Antigen affinity purification
Conjugation:	Unconjugated
Storage:	Store at -20°C as received.
Stability:	Stable for 12 months from date of receipt.
Gene Name:	amidohydrolase domain containing 2
Database Link:	NP_057028 Entrez Gene 245847 Mouse Entrez Gene 302972 Rat Entrez Gene 51005 Human Q9Y303
Background:	Hydrolyzes the N-glycolyl group from N-glycolylglucosamine 6-phosphate (GlcNGc-6-P) in the N-glycolylneuraminic acid (Neu5Gc) degradation pathway. Although human is not able to catalyze formation of Neu5Gc due to the inactive CMAHP enzyme, Neu5Gc is present in food and must be degraded.
Synonyms:	CGI-14
Protein Pathways:	Amino sugar and nucleotide sugar metabolism



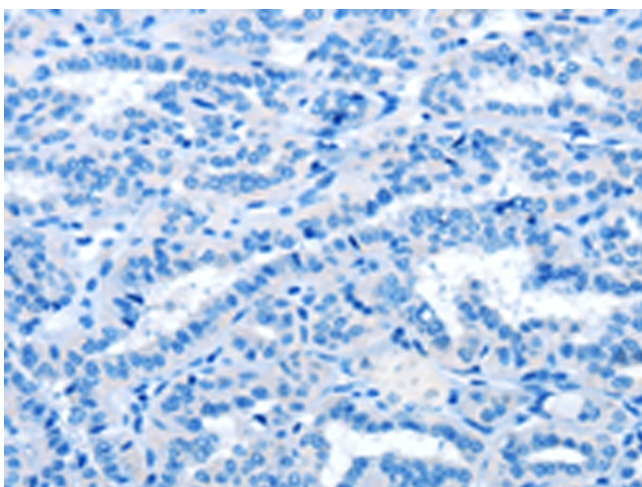
[View online »](#)

Product images:

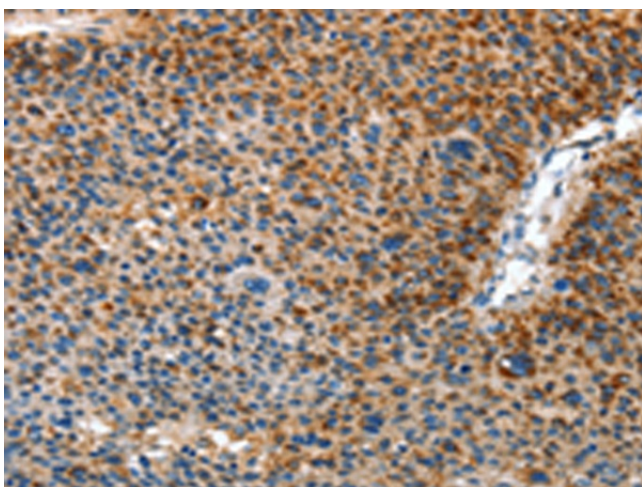
Gel: 10%SDS-PAGE
Lysate: 40 μ g
Lane 1-2: mouse heart tissue
Mouse liver tissue
Primary antibody: [TA323953] (AMDHD2 Antibody) at dilution 1/500
Secondary antibody: Goat anti rabbit IgG at 1/8000 dilution
Exposure time: 3 minutes



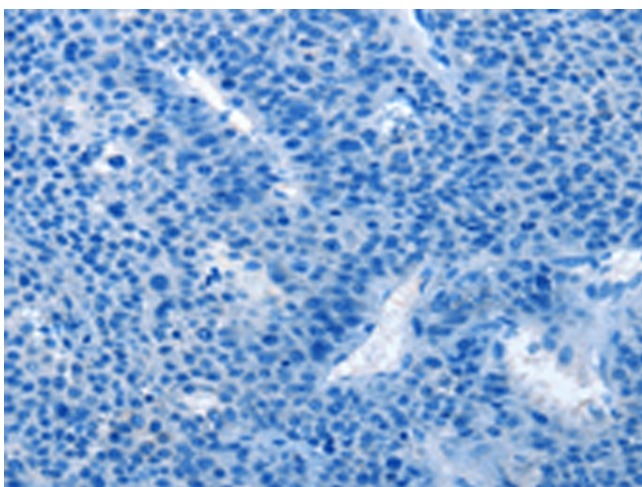
Immunohistochemistry of paraffin-embedded Human thyroid cancer tissue using [TA323953] (AMDHD2 Antibody) at dilution 1/40 (Original magnification: \times 200)



Immunohistochemistry of paraffin-embedded Human thyroid cancer tissue using [TA323953] (AMDHD2 Antibody) at dilution 1/40, treated with fusion protein. (Original magnification: x200)



Immunohistochemistry of paraffin-embedded Human liver cancer tissue using [TA323953] (AMDHD2 Antibody) at dilution 1/40 (Original magnification: x200)



Immunohistochemistry of paraffin-embedded Human liver cancer tissue using [TA323953] (AMDHD2 Antibody) at dilution 1/40, treated with fusion protein. (Original magnification: x200)