

## Product datasheet for **TA323953**

### AMDHD2 Rabbit Polyclonal Antibody

#### Product data:

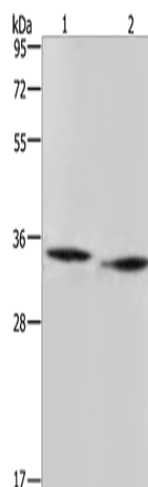
Product Type:	Primary Antibodies
Applications:	IHC, WB
Recommended Dilution:	WB: 200-1000 WB positive control: mouse heart and liver tissue IHC: 50-200 Positive control: Human thyroid cancer Predicted cell location: Cytoplasm
Reactivity:	Human, Mouse, Rat
Host:	Rabbit
Isotype:	IgG
Clonality:	Polyclonal
Immunogen:	Fusion protein corresponding to C terminal 250 amino acids of human amidohydrolase domain containing 2
Formulation:	PBS pH7.3, 0.05% NaN <sub>3</sub> , 50% glycerol
Concentration:	lot specific
Purification:	Antigen affinity purification
Conjugation:	Unconjugated
Storage:	Store at -20°C as received.
Stability:	Stable for 12 months from date of receipt.
Gene Name:	amidohydrolase domain containing 2
Database Link:	<a href="#">NP_057028</a> <a href="#">Entrez Gene 245847</a> <a href="#">MouseEntrez Gene 302972</a> <a href="#">RatEntrez Gene 51005</a> <a href="#">Human Q9Y303</a>
Background:	Hydrolyzes the N-glycolyl group from N-glycolylglucosamine 6-phosphate (GlcNGc-6-P) in the N-glycolylneuraminic acid (Neu5Gc) degradation pathway. Although human is not able to catalyze formation of Neu5Gc due to the inactive CMAHP enzyme, Neu5Gc is present in food and must be degraded.
Synonyms:	CGI-14



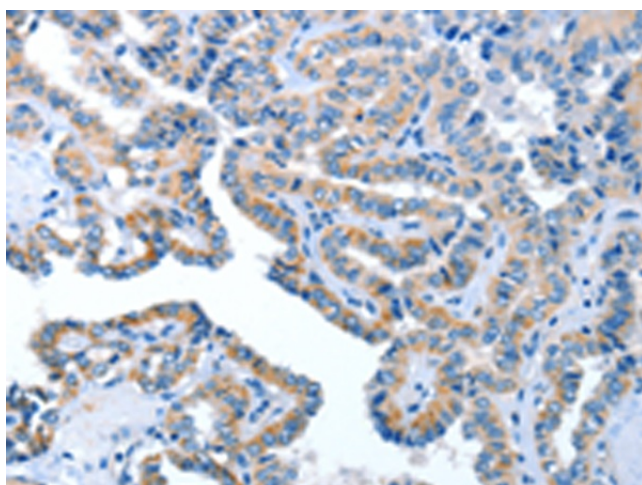
[View online »](#)

Protein Pathways: Amino sugar and nucleotide sugar metabolism

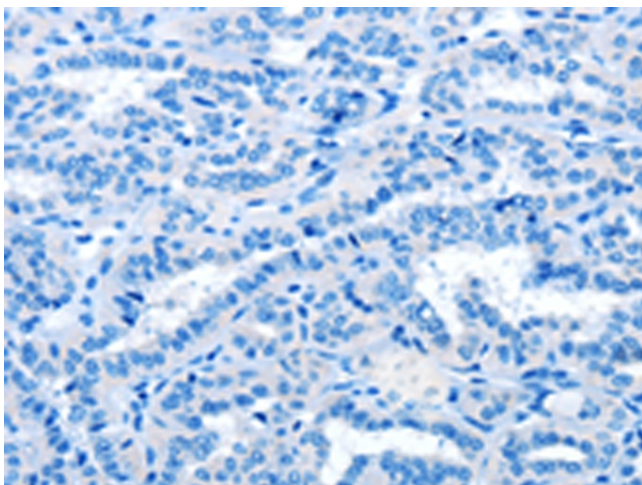
### Product images:



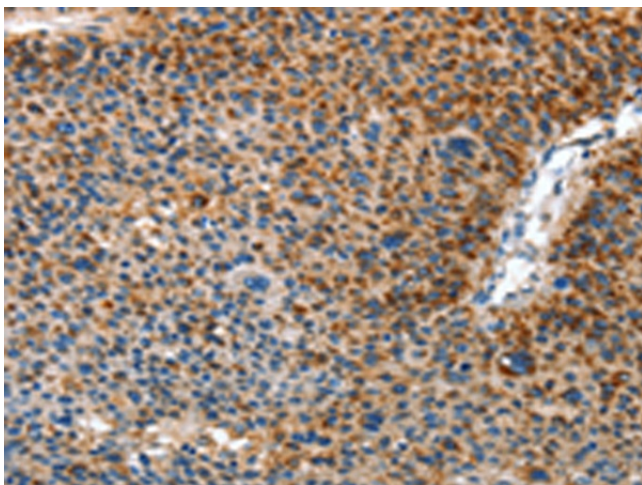
Gel: 10%SDS-PAGE  
Lysate: 40  $\mu$ g  
Lane 1-2: mouse heart tissue  
Mouse liver tissue  
Primary antibody: TA323953 (AMDHD2 Antibody)  
at dilution 1/500  
Secondary antibody: Goat anti rabbit IgG at  
1/8000 dilution  
Exposure time: 3 minutes



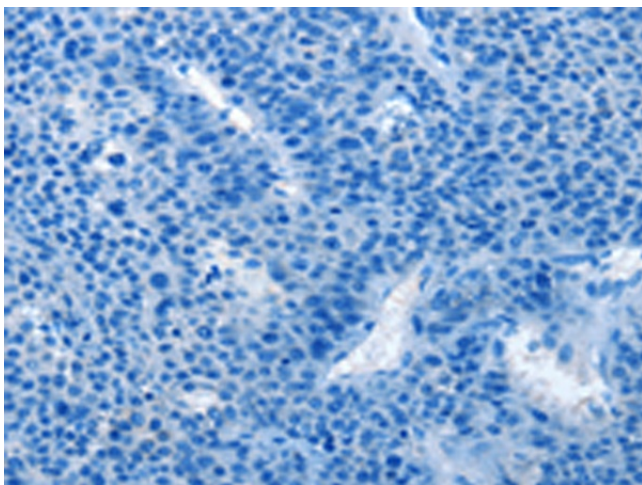
Immunohistochemistry of paraffin-embedded  
Human thyroid cancer tissue using TA323953  
(AMDHD2 Antibody) at dilution 1/40 (Original  
magnification:  $\times$ 200)



Immunohistochemistry of paraffin-embedded Human thyroid cancer tissue using TA323953 (AMDHD2 Antibody) at dilution 1/40, treated with fusion protein. (Original magnification:  $\times 200$ )



Immunohistochemistry of paraffin-embedded Human liver cancer tissue using TA323953 (AMDHD2 Antibody) at dilution 1/40 (Original magnification:  $\times 200$ )



Immunohistochemistry of paraffin-embedded Human liver cancer tissue using TA323953 (AMDHD2 Antibody) at dilution 1/40, treated with fusion protein. (Original magnification:  $\times 200$ )