

Product datasheet for **TA323949**

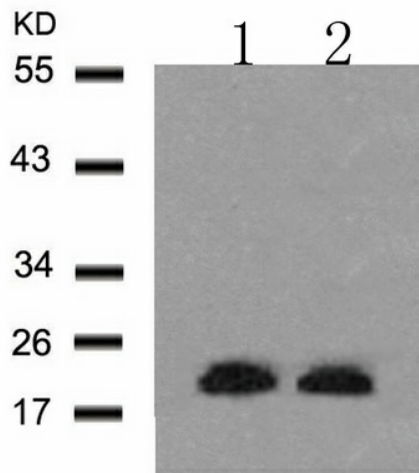
Stathmin 1 (STMN1) Rabbit Polyclonal Antibody

Product data:

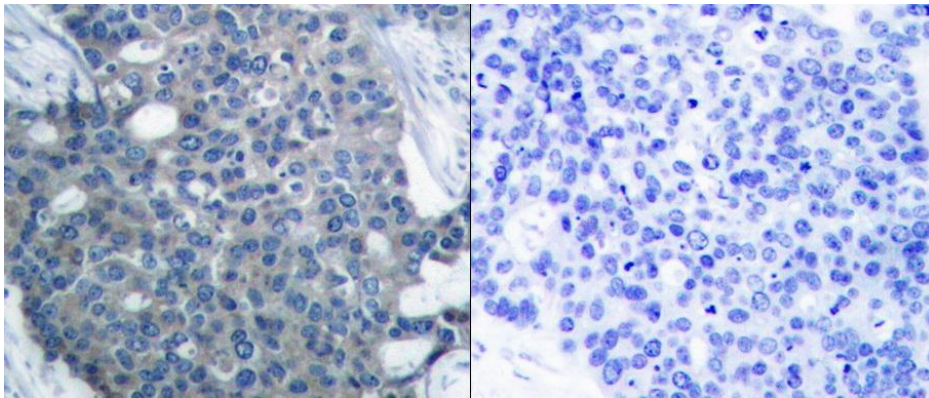
Product Type:	Primary Antibodies
Applications:	IF, IHC, WB
Recommended Dilution:	WB: 1:500-1000, IHC: 1:50-100, IF: 1:100-200
Reactivity:	Human, Mouse, Rat
Host:	Rabbit
Isotype:	IgG
Clonality:	Polyclonal
Immunogen:	Peptide sequence around aa. 23~27 (I-L-S-P-R) derived from Human Stathmin 1.
Formulation:	PBS pH7.3, 0.05% NaN ₃ , 50% glycerol
Concentration:	lot specific
Purification:	Antigen affinity purification
Conjugation:	Unconjugated
Storage:	Store at -20°C as received.
Stability:	Stable for 12 months from date of receipt.
Predicted Protein Size:	17 kDa
Gene Name:	stathmin 1
Database Link:	NP_001138926 Entrez Gene 16765 MouseEntrez Gene 29332 RatEntrez Gene 3925 Human P16949
Background:	Involved in the regulation of the microtubule (MT) filament system by destabilizing microtubules. Prevents assembly and promotes disassembly of microtubules. Phosphorylation at Ser-16 may be required for axon formation during neurogenesis. Involved in the control of the learned and innate fear
Synonyms:	C1orf215; Lag; LAP18; OP18; PP17; PP19; PR22; SMN
Protein Pathways:	MAPK signaling pathway



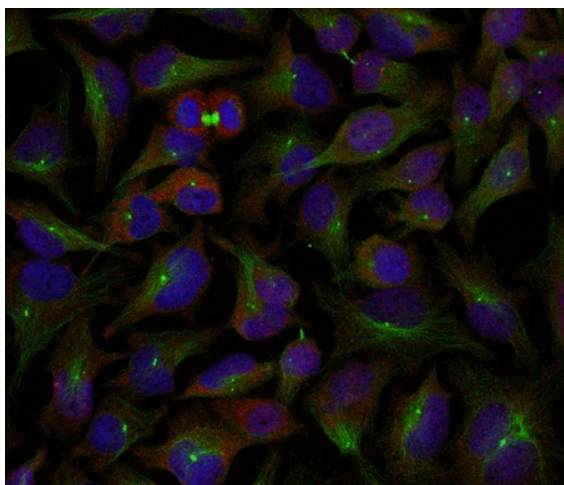
[View online »](#)

Product images:


Predicted band size: 17 kDa. Positive control: 293 and HeLa cells lysate. Recommended dilution: 1/500-1000. (Gel: 12%SDS-PAGE Lane 1, 2: 293 and HeLa cells lysate Lysates: 30 ug per lane Primary antibody: 1/500 dilution Secondary antibody: Goat anti Rabbit IgG - H&L (HRP) at 1/10000 dilution Exposure time: 1 minute)



Predicted cell location: Cytoplasm. Positive control: Human breast carcinoma tissue. Recommended dilution: 1/50-100 The image on the left is immunohistochemistry of paraffin-embedded human breast carcinoma tissue using STMN1 (Ab-25) antibody at dilution 1/50, on the right is treated with the synthetic peptide. (Original magnification: x200)



Predicted cell location: Cytoplasm. Positive control: HeLa cells. Recommended dilution: 1/100-200. The image is immunofluorescence of methanol-fixed HeLa cells using STMN1 antibody at dilution 1/100. (Original magnification: x200)