

Product datasheet for **TA323944S**

Nrf2 (NFE2L2) Rabbit Polyclonal Antibody

Product data:

Product Type:	Primary Antibodies
Applications:	IHC, WB
Recommended Dilution:	WB: 500-2000 WB positive control: NIH/3T3 and A172 cell lysates IHC: 50-200 Positive control: Human tonsil Predicted cell location: Cytoplasm and Nucleus
Reactivity:	Human, Mouse, Rat
Host:	Rabbit
Isotype:	IgG
Clonality:	Polyclonal
Immunogen:	Fusion protein corresponding to C terminal 300 amino acids of human nuclear factor (erythroid-derived 2)-like 2
Formulation:	PBS pH7.3, 0.05% NaN ₃ , 50% glycerol
Purification:	Antigen affinity purification
Conjugation:	Unconjugated
Storage:	Store at -20°C as received.
Stability:	Stable for 12 months from date of receipt.
Predicted Protein Size:	68 kDa
Gene Name:	nuclear factor, erythroid 2 like 2
Database Link:	NP_001138884 Entrez Gene 18024 Mouse Entrez Gene 83619 Rat Entrez Gene 4780 Human Q16236



[View online »](#)

Background:

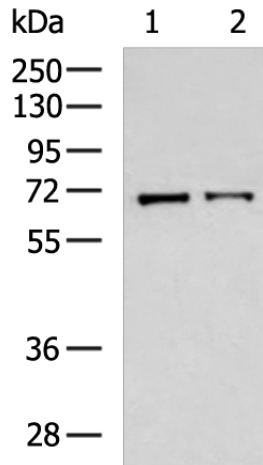
This gene encodes a transcription factor which is a member of a small family of basic leucine zipper (bZIP) proteins. The encoded transcription factor regulates genes which contain antioxidant response elements (ARE) in their promoters; many of these genes encode proteins involved in response to injury and inflammation which includes the production of free radicals. Multiple transcript variants encoding different isoforms have been found for this gene.?

Synonyms:

NRF2

Protein Families:

Transcription Factors

Product images:


Gel: 8%SDS-PAGE

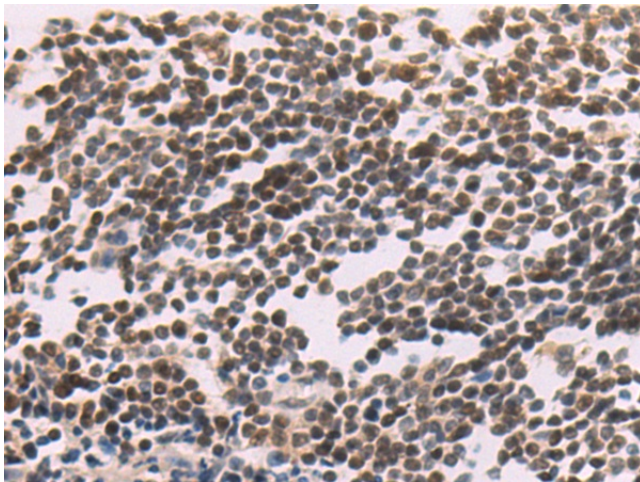
Lysate: 40 μ g

Lane 1-2: NIH/3T3 and A172 cell lysates

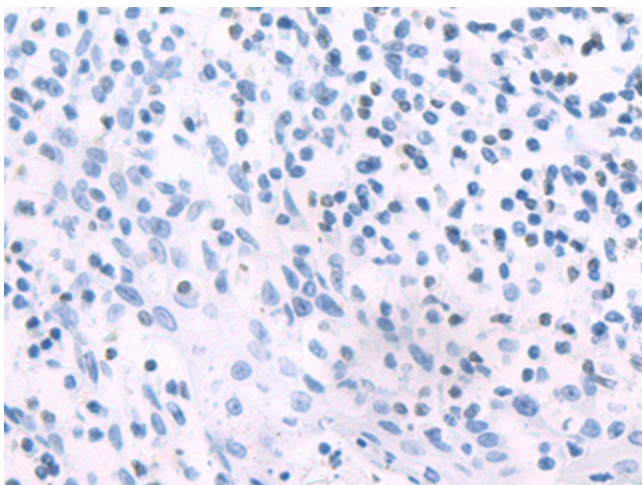
Primary antibody: [TA323944] (NFE2L2 Antibody) at dilution 1/400

Secondary antibody: Goat anti rabbit IgG at 1/5000 dilution

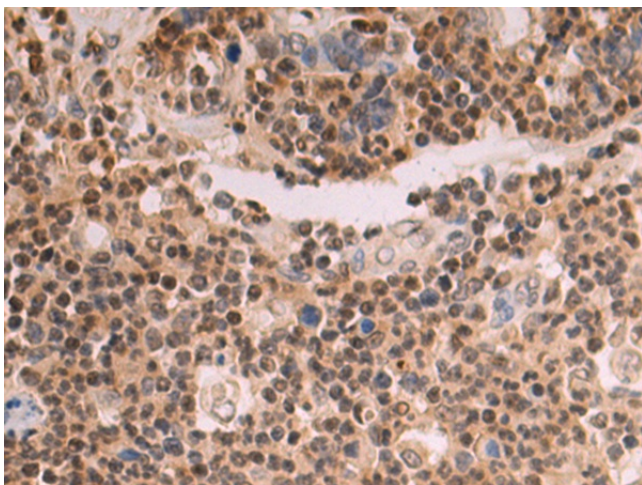
Exposure time: 3 minutes



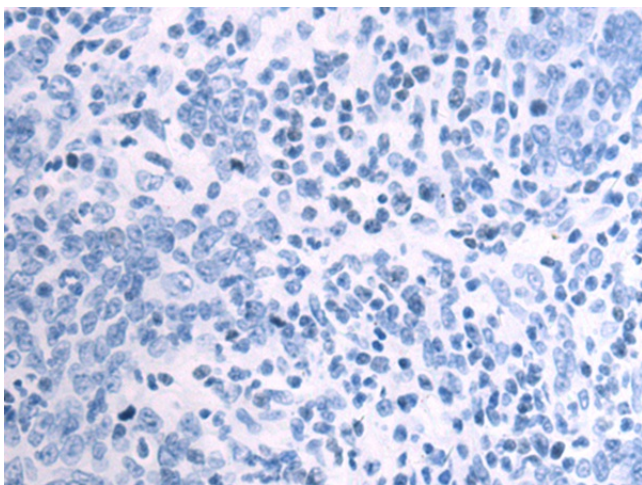
Immunohistochemistry of paraffin-embedded Human tonsil tissue using [TA323944] (NFE2L2 Antibody) at dilution 1/55 (Original magnification: \times 200)



Immunohistochemistry of paraffin-embedded Human tonsil tissue using [TA323944] (NFE2L2 Antibody) at dilution 1/55, treated with fusion protein. (Original magnification: $\times 200$)



Immunohistochemistry of paraffin-embedded Human gastric cancer tissue using [TA323944] (NFE2L2 Antibody) at dilution 1/55 (Original magnification: $\times 200$)



Immunohistochemistry of paraffin-embedded Human gastric cancer tissue using [TA323944] (NFE2L2 Antibody) at dilution 1/55, treated with fusion protein. (Original magnification: $\times 200$)