

Product datasheet for **TA323940**

CDK6 Rabbit Polyclonal Antibody

Product data:

Product Type:	Primary Antibodies
Applications:	IF, IHC, WB
Recommended Dilution:	WB: 1:500-1000, IHC: 1:50-100, IF: 1:100-200
Reactivity:	Human, Mouse
Modifications:	Phospho-specific
Host:	Rabbit
Isotype:	IgG
Clonality:	Polyclonal
Immunogen:	Peptide sequence around phosphorylation site of tyrosine 24 (G-A-Y(p)-G-K) derived from Human CDK6.
Formulation:	PBS pH7.3, 0.05% NaN ₃ , 50% glycerol
Concentration:	lot specific
Purification:	Antigen affinity purification
Conjugation:	Unconjugated
Storage:	Store at -20°C as received.
Stability:	Stable for 12 months from date of receipt.
Predicted Protein Size:	37 kDa
Gene Name:	cyclin-dependent kinase 6
Database Link:	NP_001250 Entrez Gene 12571 Mouse Entrez Gene 1021 Human Q00534



[View online »](#)

Background:

The protein encoded by this gene is a member of the cyclin-dependent protein kinase (CDK) family. CDK family members are highly similar to the gene products of *Saccharomyces cerevisiae* cdc28, and *Schizosaccharomyces pombe* cdc2, and are known to be important regulators of cell cycle progression. This kinase is a catalytic subunit of the protein kinase complex that is important for cell cycle G1 phase progression and G1/S transition. The activity of this kinase first appears in mid-G1 phase, which is controlled by the regulatory subunits including D-type cyclins and members of INK4 family of CDK inhibitors. This kinase, as well as CDK4, has been shown to phosphorylate, and thus regulate the activity of, tumor suppressor protein Rb. Expression of this gene is up-regulated in some types of cancer. Multiple alternatively spliced variants, encoding the same protein, have been identified.

Synonyms:

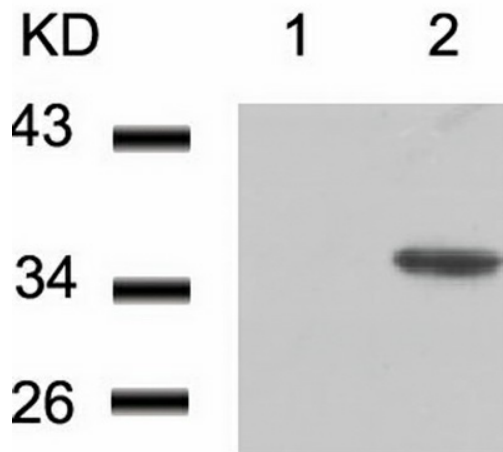
MCPH12; PLSTIRE

Protein Families:

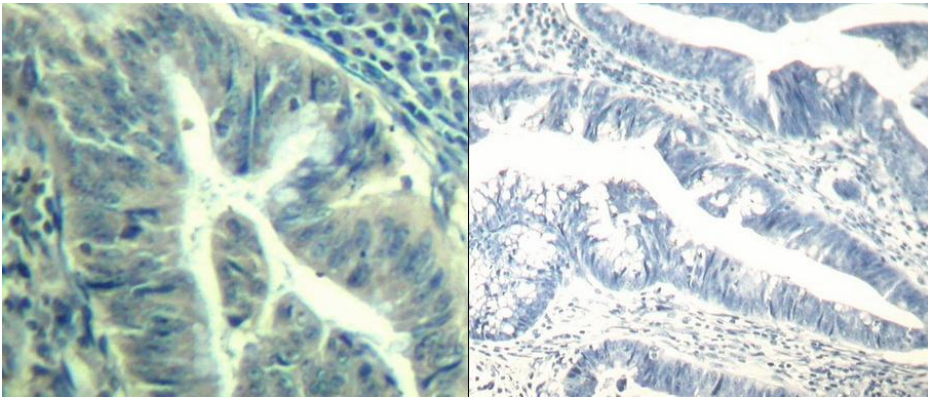
Druggable Genome, Protein Kinase

Protein Pathways:

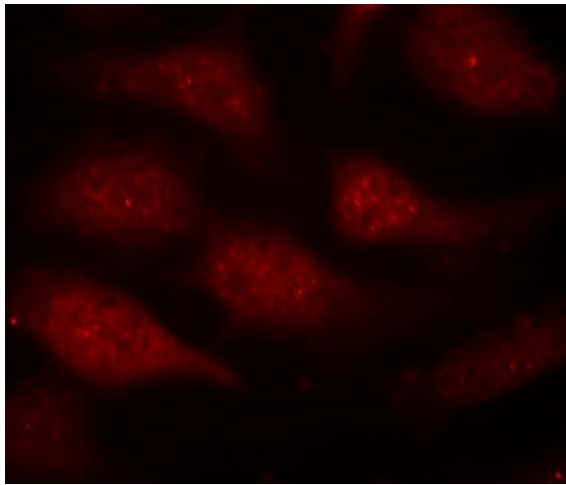
Cell cycle, Chronic myeloid leukemia, Glioma, Melanoma, Non-small cell lung cancer, p53 signaling pathway, Pancreatic cancer, Pathways in cancer, Small cell lung cancer

Product images:

Predicted band size: 37 kDa. Positive control: 293 cells treated with starvation lysate. Recommended dilution: 1/ 500-1000. (Gel: 10%SDS-PAGE Lane 1: 293 cells untreated with starvation lysate Lane 2: 293 cells treated with starvation lysate Lysates: 30 ug per lane Primary antibody: 1/500 dilution Secondary antibody: Goat anti Rabbit IgG - H&L (HRP) at 1/10000 dilution Exposure time: 1 minute)



Predicted cell location: Cytoplasm; Nucleus.
Positive control: Human colon carcinoma tissue.
Recommended dilution: 1/ 50-100 The image on the left is immunohistochemistry of paraffin-embedded human colon carcinoma tissue using CDK6 (phospho-Tyr24) antibody at dilution 1/50, on the right is treated with the synthetic peptide. (Original magnification: x200)



Predicted cell location: Cytoplasm; Nucleus.
Positive control: HeLa cells. Recommended dilution: 1/ 100-200. The image is immunofluorescence of methanol-fixed HeLa cells using CDK6 (phospho-Tyr24) antibody at dilution 1/100. (Original magnification: x200)