

## Product datasheet for **TA323938S**

### CDK6 Rabbit Polyclonal Antibody

#### Product data:

Product Type:	Primary Antibodies
Applications:	IHC, WB
Recommended Dilution:	WB: 500-2000 WB positive control: K562 cell lysate IHC: 50-200 Positive control: Human liver cancer Predicted cell location: Cytoplasm
Reactivity:	Human, Mouse
Host:	Rabbit
Isotype:	IgG
Clonality:	Polyclonal
Immunogen:	Fusion protein corresponding to a region derived from 13-300 amino acids of Human Cyclin-dependent kinase 6
Formulation:	PBS pH7.3, 0.05% NaN <sub>3</sub> , 50% glycerol
Purification:	Antigen affinity purification
Conjugation:	Unconjugated
Storage:	Store at -20°C as received.
Stability:	Stable for 12 months from date of receipt.
Predicted Protein Size:	37 kDa
Gene Name:	cyclin-dependent kinase 6
Database Link:	<a href="#">NP_001138778</a> <a href="#">Entrez Gene 12571 Mouse</a> <a href="#">Entrez Gene 1021 Human</a> <a href="#">Q00534</a>



[View online »](#)

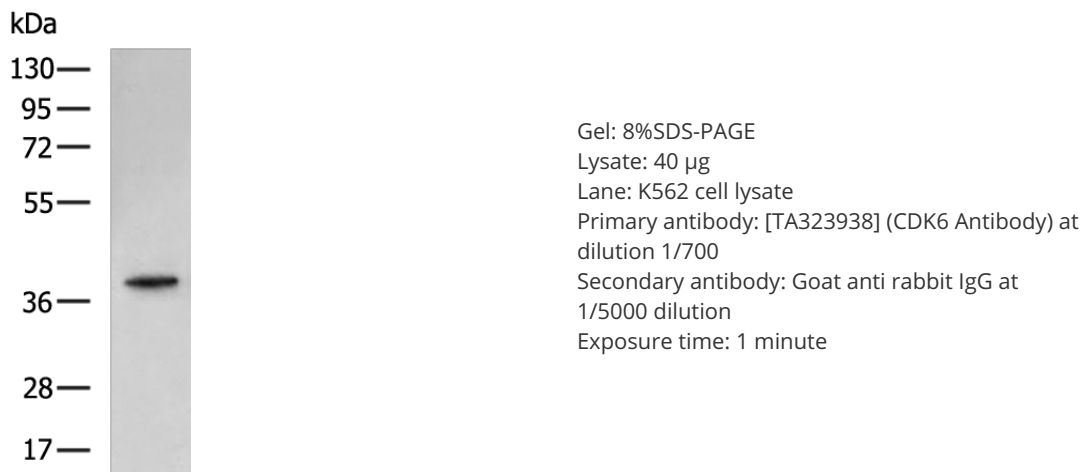
**Background:** The protein encoded by this gene is a member of the cyclin-dependent protein kinase (CDK) family. CDK family members are highly similar to the gene products of *Saccharomyces cerevisiae cdc28*; and *Schizosaccharomyces pombe cdc2*; and are known to be important regulators of cell cycle progression. This kinase is a catalytic subunit of the protein kinase complex that is important for cell cycle G1 phase progression and G1/S transition. The activity of this kinase first appears in mid-G1 phase; which is controlled by the regulatory subunits including D-type cyclins and members of INK4 family of CDK inhibitors. This kinase; as well as CDK4; has been shown to phosphorylate; and thus regulate the activity of; tumor suppressor protein Rb. Expression of this gene is up-regulated in some types of cancer. Multiple alternatively spliced variants; encoding the same protein; have been identified.

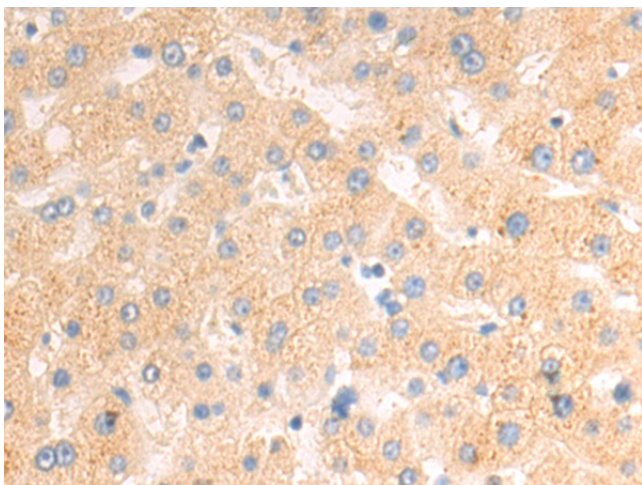
**Synonyms:** MCPH12; PLSTIRE

**Protein Families:** Druggable Genome, Protein Kinase

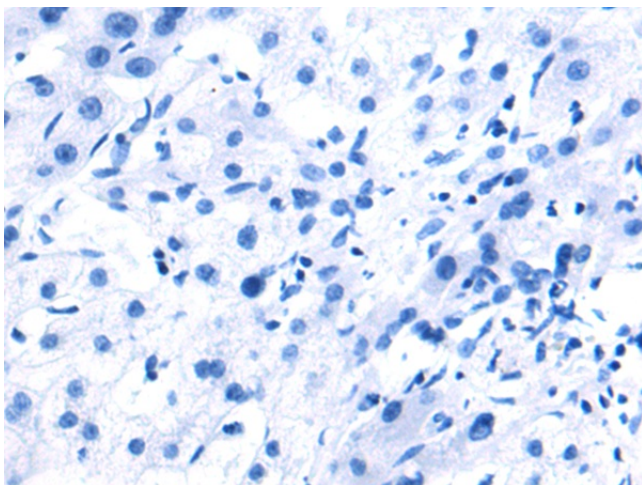
**Protein Pathways:** Cell cycle, Chronic myeloid leukemia, Glioma, Melanoma, Non-small cell lung cancer, p53 signaling pathway, Pancreatic cancer, Pathways in cancer, Small cell lung cancer

### Product images:

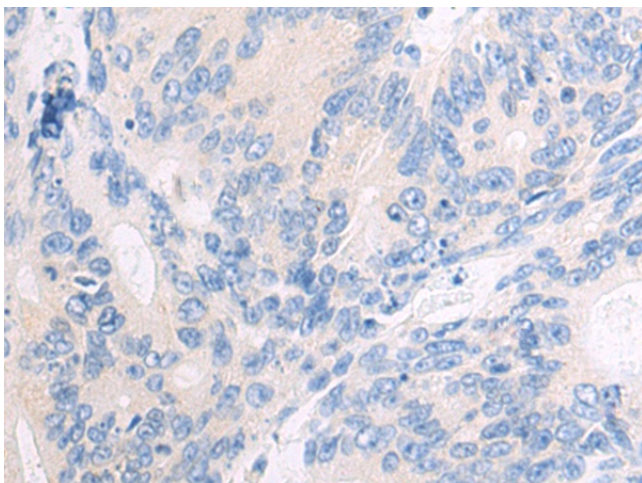




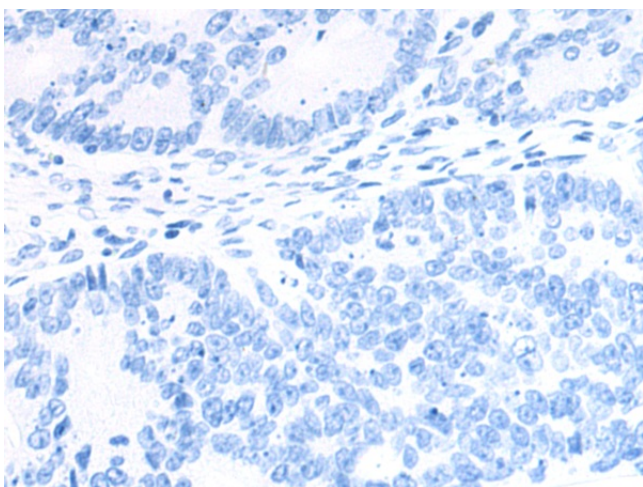
Immunohistochemistry of paraffin-embedded Human liver cancer tissue using [TA323938] (CDK6 Antibody) at dilution 1/55 (Original magnification: x200)



Immunohistochemistry of paraffin-embedded Human liver cancer tissue using [TA323938] (CDK6 Antibody) at dilution 1/55, treated with fusion protein. (Original magnification: x200)



Immunohistochemistry of paraffin-embedded Human colorectal cancer tissue using [TA323938] (CDK6 Antibody) at dilution 1/55 (Original magnification: x200)



Immunohistochemistry of paraffin-embedded Human colorectal cancer tissue using [TA323938] (CDK6 Antibody) at dilution 1/55, treated with fusion protein. (Original magnification:  $\times 200$ )