

## Product datasheet for **TA323920**

### FGF1 Rabbit Polyclonal Antibody

#### Product data:

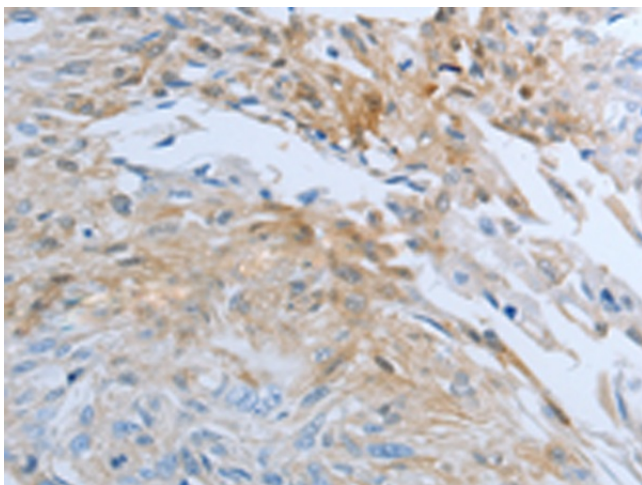
Product Type:	Primary Antibodies
Applications:	IHC
Recommended Dilution:	IHC: 25-100 Positive control: Human esophagus cancer Predicted cell location: Cytoplasm, Cell cortex
Reactivity:	Human, Mouse, Rat
Host:	Rabbit
Isotype:	IgG
Clonality:	Polyclonal
Immunogen:	Synthetic peptide corresponding to a region derived from 41-55 amino acids of Human Fibroblast growth factor 1
Formulation:	PBS pH7.3, 0.05% NaN <sub>3</sub> , 50% glycerol
Concentration:	lot specific
Purification:	Antigen affinity purification
Conjugation:	Unconjugated
Storage:	Store at -20°C as received.
Stability:	Stable for 12 months from date of receipt.
Gene Name:	fibroblast growth factor 1
Database Link:	<a href="#">NP_000791</a> <a href="#">Entrez Gene 14164 MouseEntrez Gene 25317 RatEntrez Gene 2246 Human P05230</a>
Background:	FGF family members possess broad mitogenic and cell survival activities; and are involved in a variety of biological processes; including embryonic development; cell growth; morphogenesis; tissue repair; tumor growth and invasion.FGF1 Plays an important role in the regulation of cell survival; cell division; angiogenesis; cell differentiation and cell migration. Functions as potent mitogen in vitro.
Synonyms:	AFGF; ECGF; ECGF-beta; ECGFA; ECGFB; FGF-1; FGF-alpha; FGFA; GLIO703; HBGF-1; HBGF1
Protein Families:	Druggable Genome, Secreted Protein



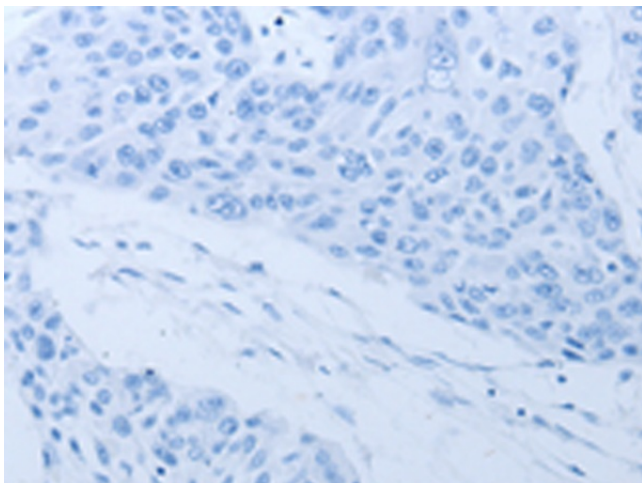
[View online »](#)

Protein Pathways: MAPK signaling pathway, Melanoma, Pathways in cancer, Regulation of actin cytoskeleton

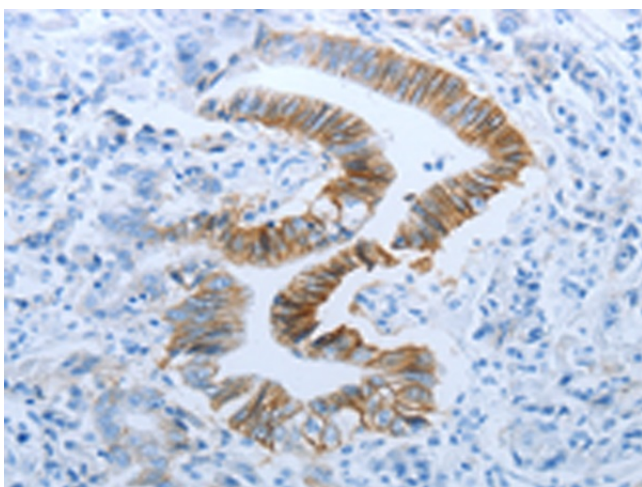
### Product images:



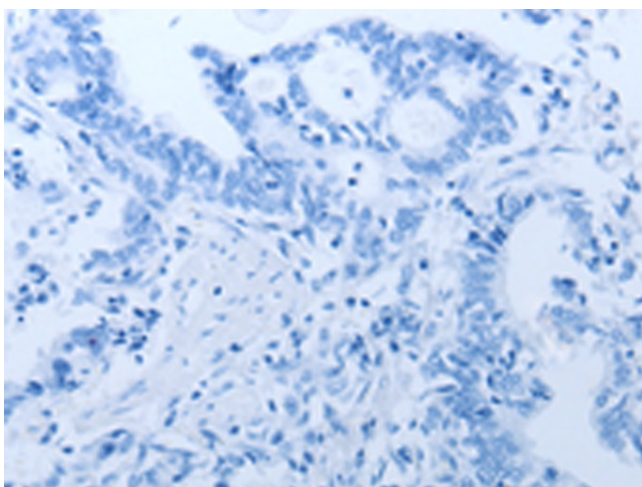
Immunohistochemistry of paraffin-embedded Human esophagus cancer tissue using TA323920 (FGF1 Antibody) at dilution 1/25 (Original magnification:  $\times 200$ )



Immunohistochemistry of paraffin-embedded Human esophagus cancer tissue using TA323920 (FGF1 Antibody) at dilution 1/25, treated with synthetic peptide. (Original magnification:  $\times 200$ )



Immunohistochemistry of paraffin-embedded Human gastric cancer tissue using TA323920 (FGF1 Antibody) at dilution 1/25 (Original magnification:  $\times 200$ )



Immunohistochemistry of paraffin-embedded Human gastric cancer tissue using TA323920 (FGF1 Antibody) at dilution 1/25, treated with synthetic peptide. (Original magnification:  $\times 200$ )