

## Product datasheet for **TA323919S**

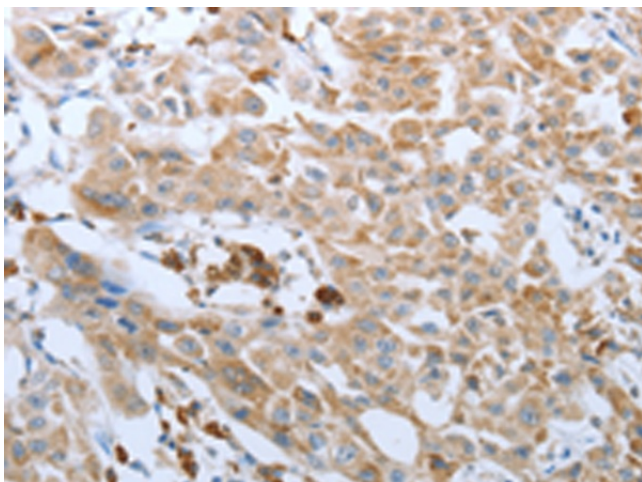
### FGF1 Rabbit Polyclonal Antibody

#### Product data:

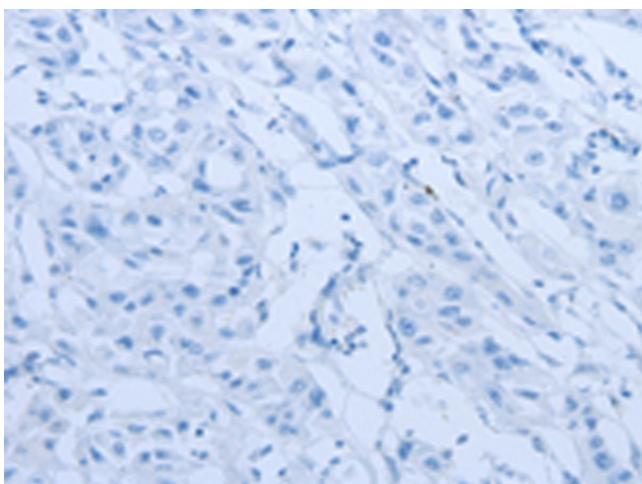
Product Type:	Primary Antibodies
Applications:	IHC
Recommended Dilution:	IHC: 50-200 Positive control: Human lung cancer Predicted cell location: Cytoplasm
Reactivity:	Human, Mouse, Rat
Host:	Rabbit
Isotype:	IgG
Clonality:	Polyclonal
Immunogen:	Synthetic peptide corresponding to a region derived from 41-55 amino acids of Human Fibroblast growth factor 1
Formulation:	PBS pH7.3, 0.05% NaN <sub>3</sub> , 50% glycerol
Purification:	Antigen affinity purification
Conjugation:	Unconjugated
Storage:	Store at -20°C as received.
Stability:	Stable for 12 months from date of receipt.
Gene Name:	fibroblast growth factor 1
Database Link:	<a href="#">NP_000791</a> <a href="#">Entrez Gene 14164 Mouse</a> <a href="#">Entrez Gene 25317 Rat</a> <a href="#">Entrez Gene 2246 Human</a> <a href="#">P05230</a>
Background:	FGF family members possess broad mitogenic and cell survival activities; and are involved in a variety of biological processes; including embryonic development; cell growth; morphogenesis; tissue repair; tumor growth and invasion. FGF1 Plays an important role in the regulation of cell survival; cell division; angiogenesis; cell differentiation and cell migration. Functions as potent mitogen in vitro.
Synonyms:	AFGF; ECGF; ECGF-beta; ECGFA; ECGFB; FGF-1; FGF-alpha; FGFA; GLIO703; HBGF-1; HBGF1
Protein Families:	Druggable Genome, Secreted Protein
Protein Pathways:	MAPK signaling pathway, Melanoma, Pathways in cancer, Regulation of actin cytoskeleton



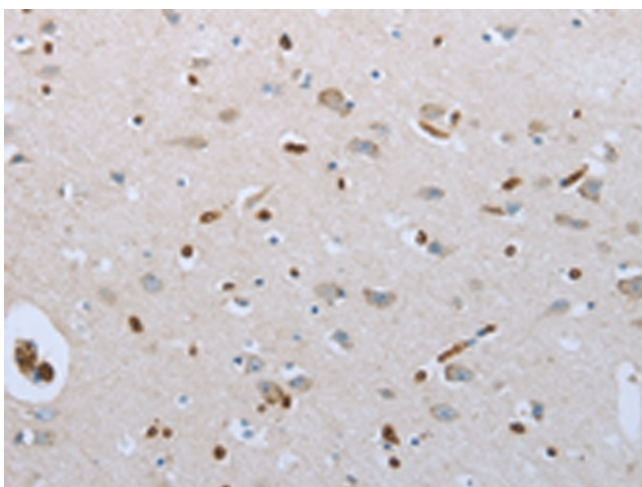
[View online »](#)

**Product images:**

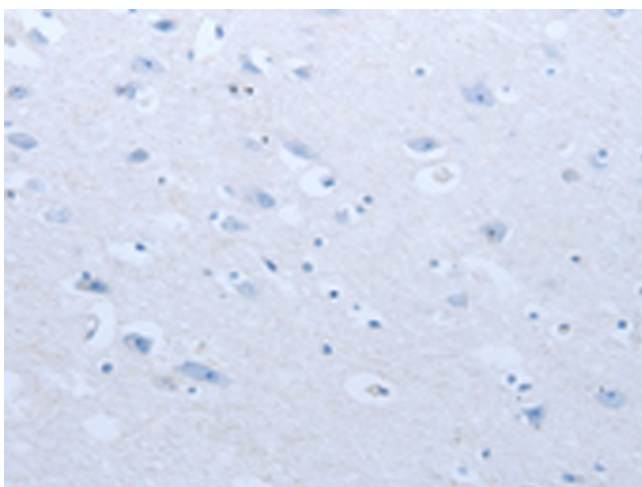
Immunohistochemistry of paraffin-embedded Human lung cancer tissue using [TA323919] (FGF1 Antibody) at dilution 1/50 (Original magnification:  $\times 200$ )



Immunohistochemistry of paraffin-embedded Human lung cancer tissue using [TA323919] (FGF1 Antibody) at dilution 1/50, treated with synthetic peptide. (Original magnification:  $\times 200$ )



Immunohistochemistry of paraffin-embedded Human brain tissue using [TA323919] (FGF1 Antibody) at dilution 1/50 (Original magnification: ×200)



Immunohistochemistry of paraffin-embedded Human brain tissue using [TA323919] (FGF1 Antibody) at dilution 1/50, treated with synthetic peptide. (Original magnification: ×200)