

## Product datasheet for **TA323918S**

### **BAIAP2 Rabbit Polyclonal Antibody**

#### **Product data:**

|                         |   |
|-------------------------|---|
| Product Type:           | Primary Antibodies  |
| Applications:           | IHC, WB   |
| Recommended Dilution:   | WB: 200-1000<br>WB positive control: SKOV3 cells<br>IHC: 50-200<br>Positive control: Human colon cancer<br>Predicted cell location: Cytoplasm, Cell membrane                      |
| Reactivity:             | Human, Mouse, Rat   |
| Host:                   | Rabbit  |
| Isotype:                | IgG   |
| Clonality:              | Polyclonal  |
| Immunogen:              | Fusion protein corresponding to a region derived from 1-179 amino acids of human BAI1-associated protein 2  |
| Formulation:            | PBS pH7.3, 0.05% NaN <sub>3</sub> , 50% glycerol  |
| Purification:           | Antigen affinity purification   |
| Conjugation:            | Unconjugated  |
| Storage:                | Store at -20°C as received.   |
| Stability:              | Stable for 12 months from date of receipt.  |
| Predicted Protein Size: | 57 kDa  |
| Gene Name:              | BAI1 associated protein 2   |
| Database Link:          | <a href="#">NP_001138360</a><br><a href="#">Entrez Gene 108100 Mouse</a> <a href="#">Entrez Gene 117542 Rat</a> <a href="#">Entrez Gene 10458 Human</a><br><a href="#">Q9UQB8</a> |



[View online »](#)

**Background:**

The protein encoded by this gene has been identified as a brain-specific angiogenesis inhibitor (BAI1)-binding protein. This adaptor protein links membrane bound G-proteins to cytoplasmic effector proteins. This protein functions as an insulin receptor tyrosine kinase substrate and suggests a role for insulin in the central nervous system. It also associates with a downstream effector of Rho small G proteins; which is associated with the formation of stress fibers and cytokinesis. This protein is involved in lamellipodia and filopodia formation in motile cells and may affect neuronal growth-cone guidance. This protein has also been identified as interacting with the dentatorubral-pallidoluysian atrophy gene; which is associated with an autosomal dominant neurodegenerative disease. Alternative splicing results in multiple transcript variants encoding distinct isoforms.

**Synonyms:**

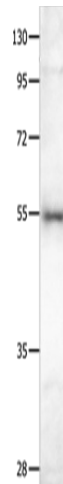
BAP2; FLAF3; IRSP53

**Protein Families:**

Druggable Genome

**Protein Pathways:**

Adherens junction, Regulation of actin cytoskeleton

**Product images:**

Gel: 8%SDS-PAGE

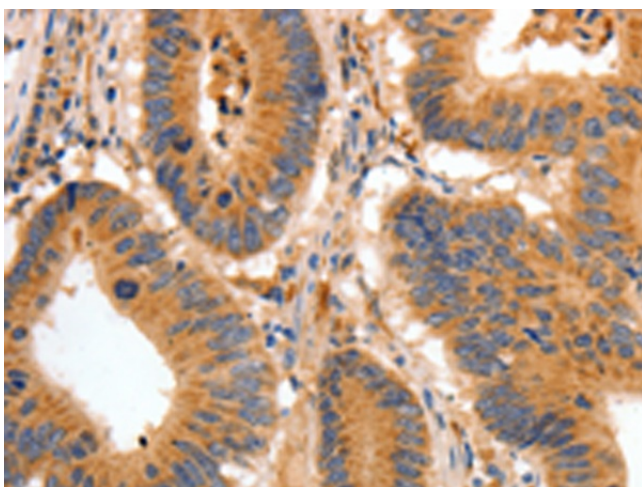
Lysate: 40 µg

Lane: SKOV3 cells

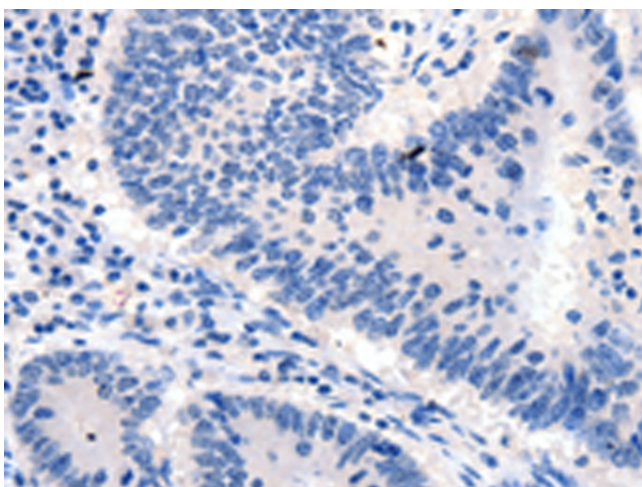
Primary antibody: [TA323918] (BAIAP2 Antibody)  
at dilution 1/350

Secondary antibody: Goat anti rabbit IgG at  
1/8000 dilution

Exposure time: 40 seconds



Immunohistochemistry of paraffin-embedded Human colon cancer tissue using [TA323918] (BAIAP2 Antibody) at dilution 1/30 (Original magnification:  $\times 200$ )



Immunohistochemistry of paraffin-embedded Human colon cancer tissue using [TA323918] (BAIAP2 Antibody) at dilution 1/30, treated with fusion protein. (Original magnification:  $\times 200$ )