

Product datasheet for **TA323918**

BAIAP2 Rabbit Polyclonal Antibody

Product data:

Product Type:	Primary Antibodies
Applications:	IHC, WB
Recommended Dilution:	WB: 200-1000 WB positive control: SKOV3 cells IHC: 50-200 Positive control: Human colon cancer Predicted cell location: Cytoplasm, Cell membrane
Reactivity:	Human, Mouse, Rat
Host:	Rabbit
Isotype:	IgG
Clonality:	Polyclonal
Immunogen:	Fusion protein corresponding to a region derived from 1-179 amino acids of human BAI1-associated protein 2
Formulation:	PBS pH7.3, 0.05% NaN ₃ , 50% glycerol
Concentration:	lot specific
Purification:	Antigen affinity purification
Conjugation:	Unconjugated
Storage:	Store at -20°C as received.
Stability:	Stable for 12 months from date of receipt.
Predicted Protein Size:	57 kDa
Gene Name:	BAI1 associated protein 2
Database Link:	NP_001138360 Entrez Gene 108100 Mouse Entrez Gene 117542 Rat Entrez Gene 10458 Human Q9UQB8



[View online »](#)

Background:

The protein encoded by this gene has been identified as a brain-specific angiogenesis inhibitor (BAI1)-binding protein. This adaptor protein links membrane bound G-proteins to cytoplasmic effector proteins. This protein functions as an insulin receptor tyrosine kinase substrate and suggests a role for insulin in the central nervous system. It also associates with a downstream effector of Rho small G proteins; which is associated with the formation of stress fibers and cytokinesis. This protein is involved in lamellipodia and filopodia formation in motile cells and may affect neuronal growth-cone guidance. This protein has also been identified as interacting with the dentatorubral-pallidoluysian atrophy gene; which is associated with an autosomal dominant neurodegenerative disease. Alternative splicing results in multiple transcript variants encoding distinct isoforms.

Synonyms:

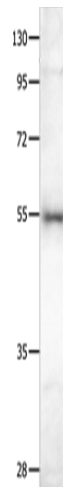
BAP2; FLAF3; IRSP53

Protein Families:

Druggable Genome

Protein Pathways:

Adherens junction, Regulation of actin cytoskeleton

Product images:

Gel: 8%SDS-PAGE

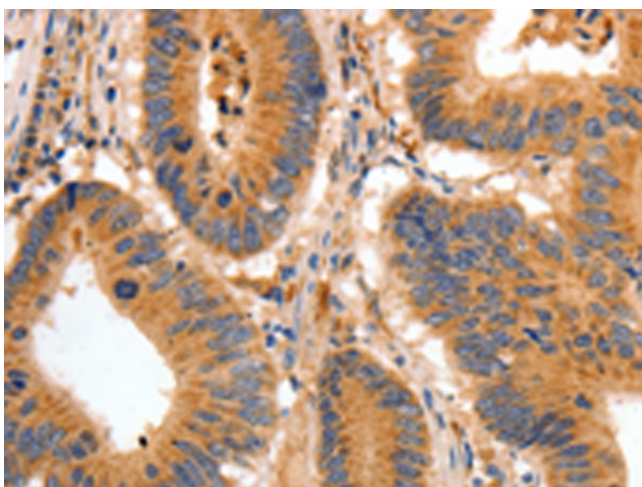
Lysate: 40 µg

Lane: SKOV3 cells

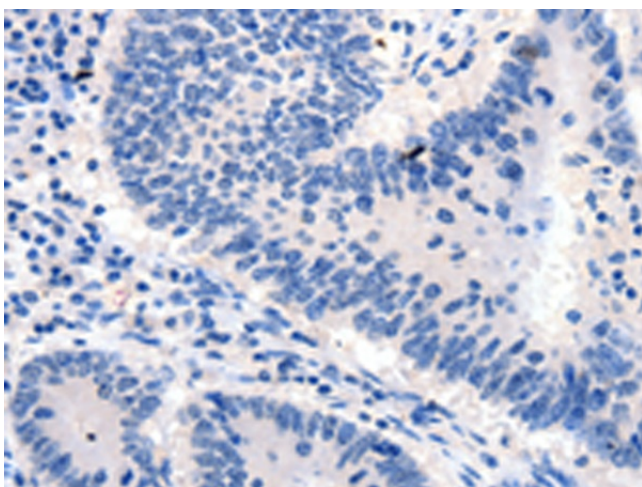
Primary antibody: TA323918 (BAIAP2 Antibody) at dilution 1/350

Secondary antibody: Goat anti rabbit IgG at 1/8000 dilution

Exposure time: 40 seconds



Immunohistochemistry of paraffin-embedded Human colon cancer tissue using TA323918 (BAIAP2 Antibody) at dilution 1/30 (Original magnification: $\times 200$)



Immunohistochemistry of paraffin-embedded Human colon cancer tissue using TA323918 (BAIAP2 Antibody) at dilution 1/30, treated with fusion protein. (Original magnification: $\times 200$)