

Product datasheet for **TA323910**

ETS1 Rabbit Polyclonal Antibody

Product data:

Product Type:	Primary Antibodies
Applications:	WB
Recommended Dilution:	ELISA: 1:1000-5000, WB: 1:200-1000
Reactivity:	Human, Mouse, Rat
Host:	Rabbit
Isotype:	IgG
Clonality:	Polyclonal
Immunogen:	Fusion protein corresponding to C terminal 209 amino acids of human v-ets erythroblastosis virus E26 oncogene homolog 1 (avian)
Formulation:	PBS pH7.3, 0.05% NaN ₃ , 50% glycerol
Concentration:	lot specific
Purification:	Antigen affinity purification
Conjugation:	Unconjugated
Storage:	Store at -20°C as received.
Stability:	Stable for 12 months from date of receipt.
Predicted Protein Size:	31 kDa
Gene Name:	ETS proto-oncogene 1, transcription factor
Database Link:	NP_001137292 Entrez Gene 23871 Mouse Entrez Gene 24356 Rat Entrez Gene 2113 Human P14921
Background:	This gene encodes a member of the ETS family of transcription factors; which are defined by the presence of a conserved ETS DNA-binding domain that recognizes the core consensus DNA sequence GGAA/T in target genes. These proteins function either as transcriptional activators or repressors of numerous genes; and are involved in stem cell development; cell senescence and death; and tumorigenesis. Alternatively spliced transcript variants encoding different isoforms have been described for this gene.
Synonyms:	c-ets-1; ETS-1; EWSR2; p54

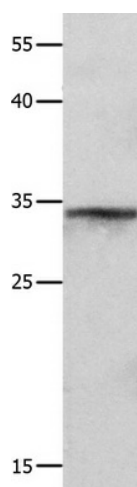


[View online »](#)

Protein Families: Druggable Genome, Transcription Factors

Protein Pathways: Dorso-ventral axis formation, Pathways in cancer, Renal cell carcinoma

Product images:



Western blot analysis of A549 cell using
TA323910 (ETS1 Antibody) at dilution 1/200