

Product datasheet for **TA323909**

BDNF Rabbit Polyclonal Antibody

Product data:

Product Type:	Primary Antibodies
Applications:	IHC
Recommended Dilution:	IHC: 30-150 Positive control: Human cervical cancer Predicted cell location: Cytoplasm
Reactivity:	Human, Mouse, Rat
Host:	Rabbit
Isotype:	IgG
Clonality:	Polyclonal
Immunogen:	Synthetic peptide corresponding to a region derived from 153-168 amino acids of Human brain-derived neurotrophic factor
Formulation:	PBS pH7.3, 0.05% NaN ₃ , 50% glycerol
Concentration:	lot specific
Purification:	Antigen affinity purification
Conjugation:	Unconjugated
Storage:	Store at -20°C as received.
Stability:	Stable for 12 months from date of receipt.
Gene Name:	brain-derived neurotrophic factor
Database Link:	NP_001700 Entrez Gene 12064 Mouse Entrez Gene 24225 Rat Entrez Gene 627 Human P23560



[View online »](#)

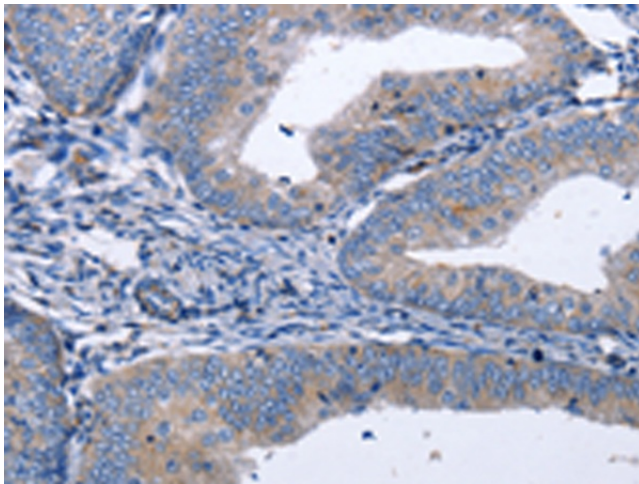
Background: The protein encoded by this gene is a member of the nerve growth factor family. It is induced by cortical neurons; and is necessary for survival of striatal neurons in the brain. Expression of this gene is reduced in both Alzheimer's and Huntington disease patients. This gene may play a role in the regulation of stress response and in the biology of mood disorders. Multiple transcript variants encoding distinct isoforms have been described for this gene. During development; promotes the survival and differentiation of selected neuronal populations of the peripheral and central nervous systems. Participates in axonal growth; pathfinding and in the modulation of dendritic growth and morphology. Major regulator of synaptic transmission and plasticity at adult synapses in many regions of the CNS.

Synonyms: ANON2; BULN2

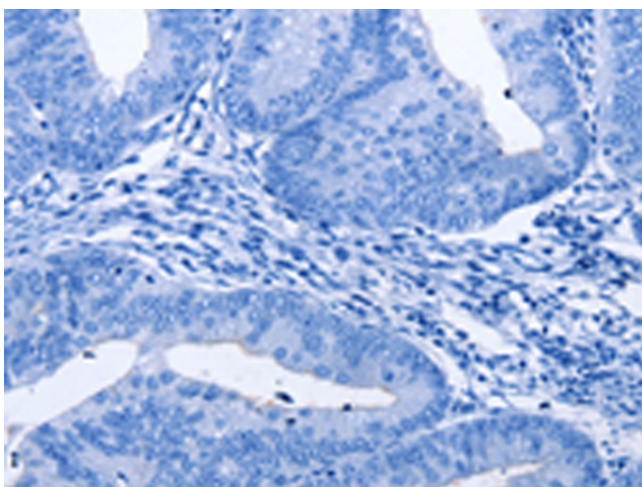
Protein Families: Adult stem cells, Druggable Genome, Embryonic stem cells, ES Cell Differentiation/IPS, Induced pluripotent stem cells, Secreted Protein, Transmembrane

Protein Pathways: Huntington's disease, MAPK signaling pathway, Neurotrophin signaling pathway

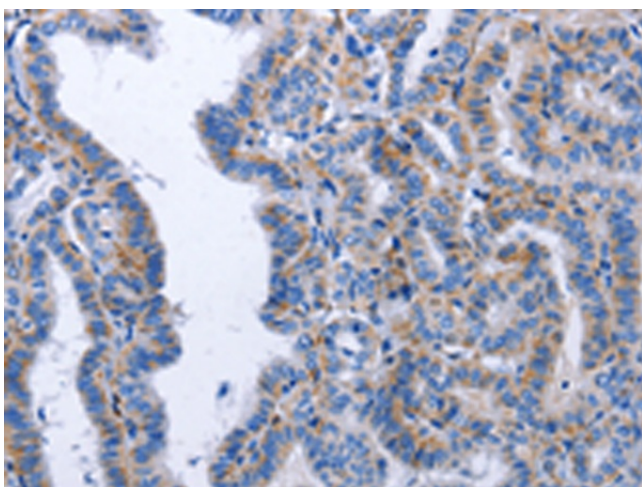
Product images:



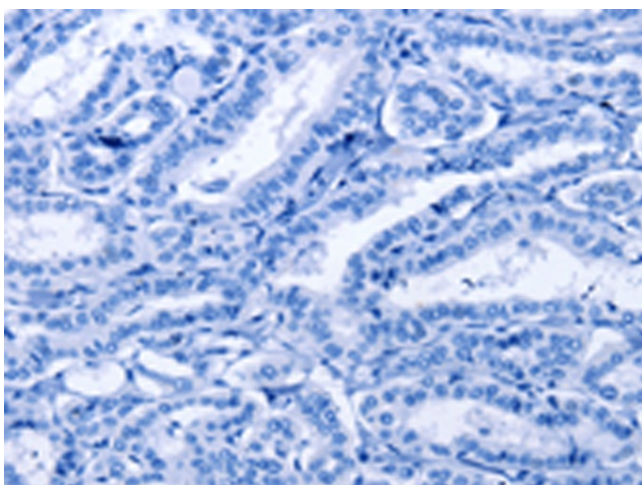
Immunohistochemistry of paraffin-embedded Human cervical cancer tissue using TA323909 (BDNF Antibody) at dilution 1/40 (Original magnification: $\times 200$)



Immunohistochemistry of paraffin-embedded Human cervical cancer tissue using TA323909 (BDNF Antibody) at dilution 1/40, treated with synthetic peptide. (Original magnification: ×200)



Immunohistochemistry of paraffin-embedded Human thyroid cancer tissue using TA323909 (BDNF Antibody) at dilution 1/40 (Original magnification: ×200)



Immunohistochemistry of paraffin-embedded Human thyroid cancer tissue using TA323909 (BDNF Antibody) at dilution 1/40, treated with synthetic peptide. (Original magnification: ×200)