

## Product datasheet for **TA323906S**

### CXCR3 Rabbit Polyclonal Antibody

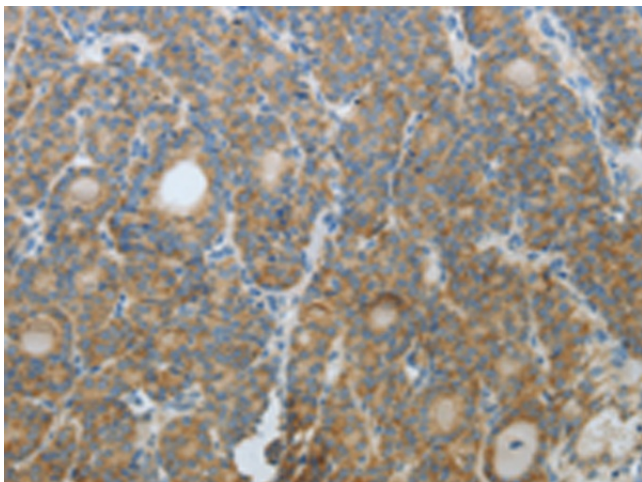
#### Product data:

Product Type:	Primary Antibodies
Applications:	IHC
Recommended Dilution:	IHC: 25-100 Positive control: Human thyroid cancer Predicted cell location: Cytoplasm
Reactivity:	Human, Mouse
Host:	Rabbit
Isotype:	IgG
Clonality:	Polyclonal
Immunogen:	Fusion protein corresponding to a region derived from 2-89 amino acids of human chemokine (C-X-C motif) receptor 3
Formulation:	PBS pH7.3, 0.05% NaN <sub>3</sub> , 50% glycerol
Purification:	Antigen affinity purification
Conjugation:	Unconjugated
Storage:	Store at -20°C as received.
Stability:	Stable for 12 months from date of receipt.
Gene Name:	C-X-C motif chemokine receptor 3
Database Link:	<a href="#">NP_001495</a> <a href="#">Entrez Gene 12766 Mouse</a> <a href="#">Entrez Gene 2833 Human</a> <a href="#">P49682</a>
Background:	This gene encodes a G protein-coupled receptor with selectivity for three chemokines; termed CXCL9/Mig (monokine induced by interferon-g); CXCL10/IP10 (interferon-g-inducible 10 kDa protein) and CXCL11/I-TAC (interferon-inducible T cell a-chemoattractant). Binding of chemokines to this protein induces cellular responses that are involved in leukocyte traffic; most notably integrin activation; cytoskeletal changes and chemotactic migration. Alternatively spliced transcript variants encoding different isoforms have been found for this gene. One of the isoforms (CXCR3-B) shows high affinity binding to chemokine; CXCL4/PF4 (PMID:12782716).

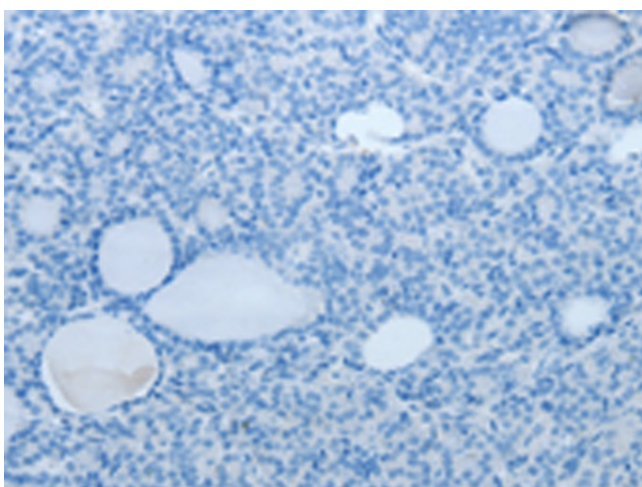


[View online »](#)

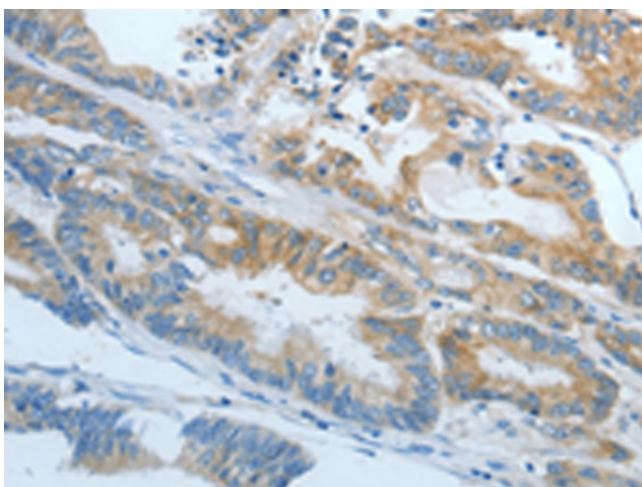
**Synonyms:** CD182; CD183; CKR-L2; CMKAR3; GPR9; IP10-R; Mig-R; MigR  
**Protein Families:** Druggable Genome, GPCR, Transmembrane  
**Protein Pathways:** Chemokine signaling pathway, Cytokine-cytokine receptor interaction

**Product images:**

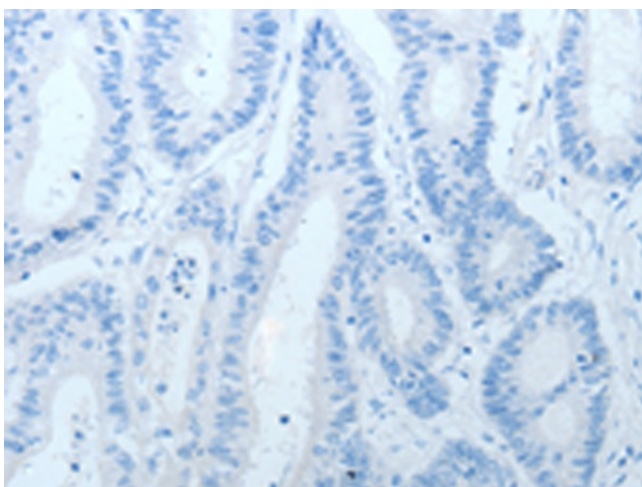
Immunohistochemistry of paraffin-embedded Human thyroid cancer tissue using [TA323906] (CXCR3 Antibody) at dilution 1/20 (Original magnification:  $\times 200$ )



Immunohistochemistry of paraffin-embedded Human thyroid cancer tissue using [TA323906] (CXCR3 Antibody) at dilution 1/20, treated with fusion protein. (Original magnification:  $\times 200$ )



Immunohistochemistry of paraffin-embedded Human colon cancer tissue using [TA323906] (CXCR3 Antibody) at dilution 1/20 (Original magnification:  $\times 200$ )



Immunohistochemistry of paraffin-embedded Human colon cancer tissue using [TA323906] (CXCR3 Antibody) at dilution 1/20, treated with fusion protein. (Original magnification:  $\times 200$ )