

Product datasheet for **TA323904S**

IL11RA Rabbit Polyclonal Antibody

Product data:

| | |
|-------------------------|--|
| Product Type: | Primary Antibodies |
| Applications: | WB |
| Recommended Dilution: | WB: 500-2000 WB positive control: 293T cells |
| Reactivity: | Human |
| Host: | Rabbit |
| Isotype: | IgG |
| Clonality: | Polyclonal |
| Immunogen: | Fusion protein corresponding to a region derived from 185-371 amino acids of Human Interleukin-11 receptor subunit alpha |
| Formulation: | PBS pH7.3, 0.05% NaN ₃ , 50% glycerol |
| Purification: | Antigen affinity purification |
| Conjugation: | Unconjugated |
| Storage: | Store at -20°C as received. |
| Stability: | Stable for 12 months from date of receipt. |
| Predicted Protein Size: | 45 kDa |
| Gene Name: | interleukin 11 receptor subunit alpha |
| Database Link: | NP_001136256 Entrez Gene 3590 Human Q14626 |
| Background: | Interleukin 11 is a stromal cell-derived cytokine that belongs to a family of pleiotropic and redundant cytokines that use the gp130 transducing subunit in their high affinity receptors. This gene encodes the IL-11 receptor; which is a member of the hematopoietic cytokine receptor family. This particular receptor is very similar to ciliary neurotrophic factor; since both contain an extracellular region with a 2-domain structure composed of an immunoglobulin-like domain and a cytokine receptor-like domain. Multiple alternatively spliced transcript variants have been found for this gene. |
| Synonyms: | CRSDA |

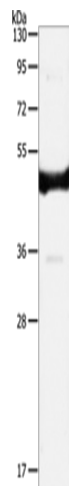


[View online »](#)

Protein Families: Druggable Genome, Transmembrane

Protein Pathways: Cytokine-cytokine receptor interaction, Hematopoietic cell lineage, Jak-STAT signaling pathway

Product images:



Gel: 8%SDS-PAGE
Lysate: 40 µg
Lane: 293T cells
Primary antibody: [TA323904] (IL11RA Antibody)
at dilution 1/350
Secondary antibody: Goat anti rabbit IgG at
1/8000 dilution
Exposure time: 1 minute