

## Product datasheet for **TA323904**

### IL11RA Rabbit Polyclonal Antibody

#### Product data:

Product Type:	Primary Antibodies
Applications:	WB
Recommended Dilution:	WB: 500-2000 WB positive control: 293T cells
Reactivity:	Human
Host:	Rabbit
Isotype:	IgG
Clonality:	Polyclonal
Immunogen:	Fusion protein corresponding to a region derived from 185-371 amino acids of Human Interleukin-11 receptor subunit alpha
Formulation:	PBS pH7.3, 0.05% NaN <sub>3</sub> , 50% glycerol
Concentration:	lot specific
Purification:	Antigen affinity purification
Conjugation:	Unconjugated
Storage:	Store at -20°C as received.
Stability:	Stable for 12 months from date of receipt.
Predicted Protein Size:	45 kDa
Gene Name:	interleukin 11 receptor subunit alpha
Database Link:	<a href="#">NP_001136256</a> <a href="#">Entrez Gene 3590 Human</a> <a href="#">Q14626</a>
Background:	Interleukin 11 is a stromal cell-derived cytokine that belongs to a family of pleiotropic and redundant cytokines that use the gp130 transducing subunit in their high affinity receptors. This gene encodes the IL-11 receptor; which is a member of the hematopoietic cytokine receptor family. This particular receptor is very similar to ciliary neurotrophic factor; since both contain an extracellular region with a 2-domain structure composed of an immunoglobulin-like domain and a cytokine receptor-like domain. Multiple alternatively spliced transcript variants have been found for this gene.



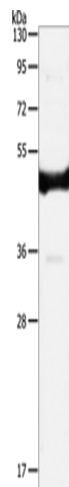
[View online »](#)

**Synonyms:** CRSDA

**Protein Families:** Druggable Genome, Transmembrane

**Protein Pathways:** Cytokine-cytokine receptor interaction, Hematopoietic cell lineage, Jak-STAT signaling pathway

### Product images:



Gel: 8%SDS-PAGE

Lysate: 40  $\mu$ g

Lane: 293T cells

Primary antibody: TA323904 (IL11RA Antibody) at dilution 1/350

Secondary antibody: Goat anti rabbit IgG at 1/8000 dilution

Exposure time: 1 minute