

Product datasheet for **TA323893**

VMAT1 (SLC18A1) Rabbit Polyclonal Antibody

Product data:

Product Type:	Primary Antibodies
Applications:	IHC, WB
Recommended Dilution:	WB: 500-2000 WB positive control: A549 cells IHC: 10-50 Positive control: Human brain Predicted cell location: Cytoplasm
Reactivity:	Human
Host:	Rabbit
Isotype:	IgG
Clonality:	Polyclonal
Immunogen:	Synthetic peptide corresponding to a region derived from 104-117 amino acids of human solute carrier family 18 (vesicular monoamine), member 1
Formulation:	PBS pH7.3, 0.05% NaN ₃ , 50% glycerol
Concentration:	lot specific
Purification:	Antigen affinity purification
Conjugation:	Unconjugated
Storage:	Store at -20°C as received.
Stability:	Stable for 12 months from date of receipt.
Predicted Protein Size:	56 kDa
Gene Name:	solute carrier family 18 member A1
Database Link:	NP_001135797 Entrez Gene 6570 Human P54219



[View online »](#)

Background:

The vesicular monoamine transporter acts to accumulate cytosolic monoamines into vesicles; using the proton gradient maintained across the vesicular membrane. Its proper function is essential to the correct activity of the monoaminergic systems that have been implicated in several human neuropsychiatric disorders. The transporter is a site of action of important drugs; including reserpine and tetrabenazine.

Synonyms:

CGAT; VAT1; VMAT1

Protein Families:

Transmembrane

Protein Pathways:

Parkinson's disease

Product images:


Gel: 10%SDS-PAGE

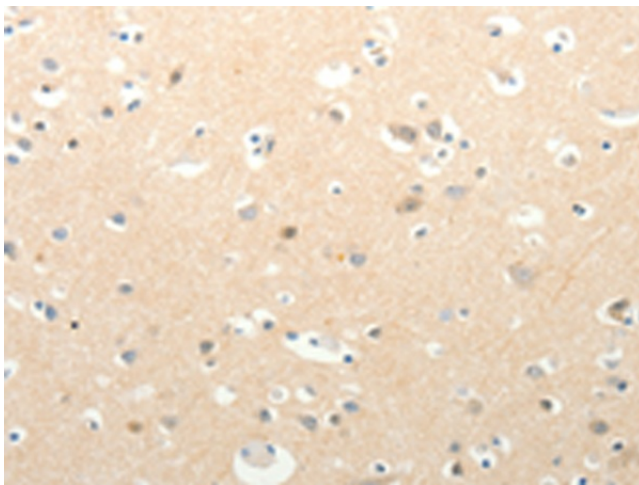
Lysate: 40 µg

Lane: A549 cells

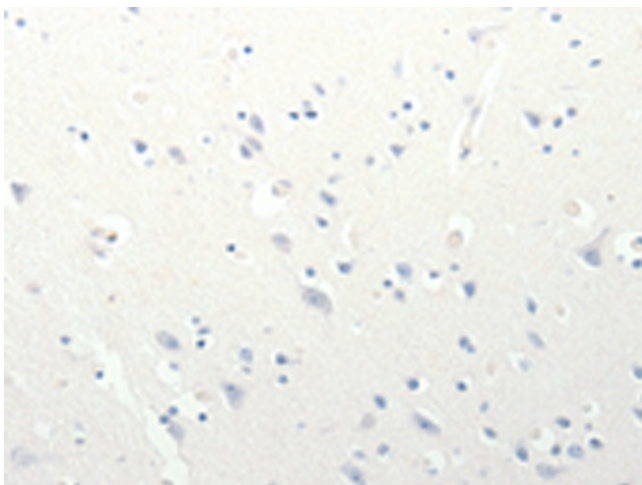
Primary antibody: TA323893 (SLC18A1 Antibody) at dilution 1/400

Secondary antibody: Goat anti rabbit IgG at 1/8000 dilution

Exposure time: 45 seconds



Immunohistochemistry of paraffin-embedded Human brain tissue using TA323893 (SLC18A1 Antibody) at dilution 1/13 (Original magnification: ×200)



Immunohistochemistry of paraffin-embedded Human brain tissue using TA323893 (SLC18A1 Antibody) at dilution 1/13, treated with synthetic peptide. (Original magnification: $\times 200$)