

Product datasheet for **TA323891**

alpha smooth muscle Actin (ACTA2) Rabbit Polyclonal Antibody

Product data:

Product Type:	Primary Antibodies
Applications:	WB
Recommended Dilution:	ELISA: 1:2000-10000, WB: 1:2000-5000
Reactivity:	Human, Mouse
Host:	Rabbit
Isotype:	IgG
Clonality:	Polyclonal
Immunogen:	Synthetic peptide (KLH-coupled) derived from human ACTA2
Formulation:	PBS pH7.3, 0.05% NaN ₃ , 50% glycerol
Concentration:	lot specific
Purification:	Antigen affinity purification
Conjugation:	Unconjugated
Storage:	Store at -20°C as received.
Stability:	Stable for 12 months from date of receipt.
Predicted Protein Size:	42 kDa
Gene Name:	actin, alpha 2, smooth muscle, aorta
Database Link:	NP_001135417 Entrez Gene 11475 Mouse Entrez Gene 59 Human P62736

Background: The protein encoded by this gene belongs to the actin family of proteins, which are highly conserved proteins that play a role in cell motility, structure and integrity. Alpha, beta and gamma actin isoforms have been identified, with alpha actins being a major constituent of the contractile apparatus, while beta and gamma actins are involved in the regulation of cell motility. This actin is an alpha actin that is found in skeletal muscle. Defects in this gene cause aortic aneurysm familial thoracic type 6. Multiple alternatively spliced variants, encoding the same protein, have been identified.

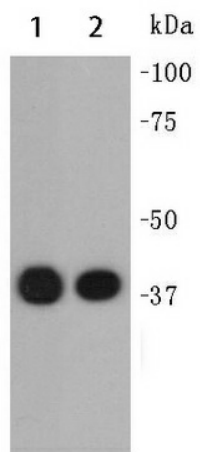
Synonyms: AAT6; ACTSA; MYMY5



[View online »](#)

Protein Pathways: Vascular smooth muscle contraction

Product images:



Predicted band size: 42 kDa. Positive control: Jurkat and NIH/3T3 cell lysate. Recommended dilution: 1/ 2000-5000. (Gel: 10%SDS-PAGE Lane 1: Jurkat cell lysate Lane 2: NIH/3T3 cell lysate Lysates: 30 ug per lane Primary antibody: 1/2000 dilution Secondary antibody: Goat anti Rabbit IgG - H&L (HRP) at 1/10000 dilution Exposure time: 1 minute)