

Product datasheet for **TA323888**

Bestrophin (BEST1) Rabbit Polyclonal Antibody

Product data:

Product Type:	Primary Antibodies
Applications:	IHC, WB
Recommended Dilution:	WB: 200-1000 WB positive control: Mouse lung tissue lysate IHC: 20-100 Positive control: Human liver cancer Predicted cell location: Cell membrane
Reactivity:	Human, Mouse
Host:	Rabbit
Isotype:	IgG
Clonality:	Polyclonal
Immunogen:	Synthetic peptide corresponding to a region derived from 438-452 amino acids of human bestrophin 1
Formulation:	PBS pH7.3, 0.05% NaN ₃ , 50% glycerol
Concentration:	lot specific
Purification:	Antigen affinity purification
Conjugation:	Unconjugated
Storage:	Store at -20°C as received.
Stability:	Stable for 12 months from date of receipt.
Gene Name:	bestrophin 1
Database Link:	NP_004174 Entrez Gene 24115 Mouse Entrez Gene 7439 Human O76090



[View online »](#)

Background:

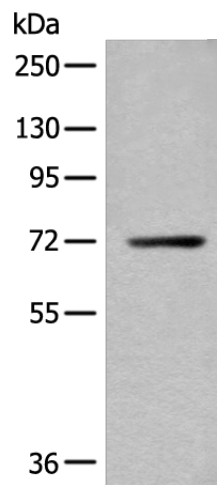
This gene encodes a member of the bestrophin gene family. This small gene family is characterized by proteins with a highly conserved N-terminus with four to six transmembrane domains. Bestrophins may form chloride ion channels or may regulate voltage-gated L-type calcium-ion channels. Bestrophins are generally believed to form calcium-activated chloride-ion channels in epithelial cells but they have also been shown to be highly permeable to bicarbonate ion transport in retinal tissue. Mutations in this gene are responsible for juvenile-onset vitelliform macular dystrophy (VMD2); also known as Best macular dystrophy; in addition to adult-onset vitelliform macular dystrophy (AVMD) and other retinopathies. Alternative splicing results in multiple variants encoding distinct isoforms.

Synonyms:

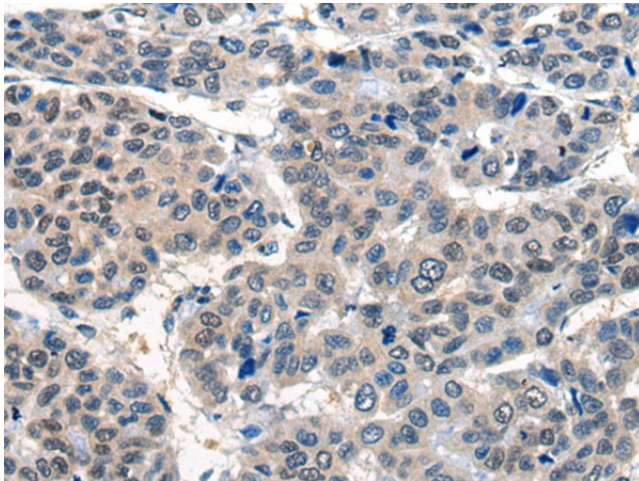
ARB; BEST; BMD; RP50; TU15B; VMD2

Protein Families:

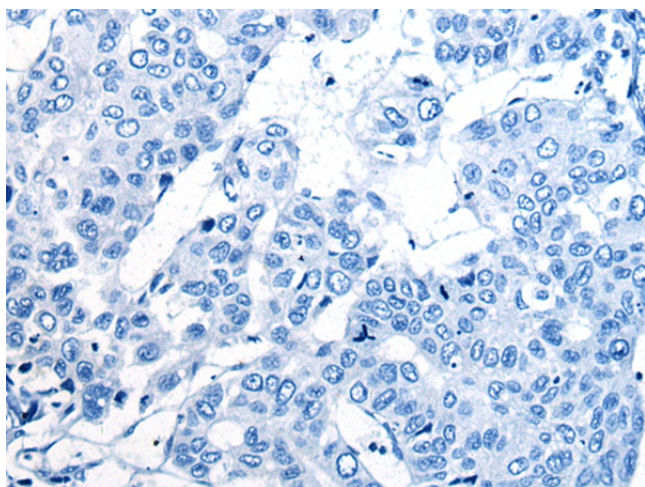
Druggable Genome, Ion Channels: Other, Transmembrane

Product images:

Gel: 8%SDS-PAGE
Lysate: 40 µg
Lane: Mouse lung tissue lysate
Primary antibody: TA323888 (BEST1 Antibody) at dilution 1/300
Secondary antibody: Goat anti rabbit IgG at 1/8000 dilution
Exposure time: 2 minutes



Immunohistochemistry of paraffin-embedded Human liver cancer tissue using TA323888 (BEST1 Antibody) at dilution 1/20 (Original magnification: ×200)



Immunohistochemistry of paraffin-embedded Human liver cancer tissue using TA323888 (BEST1 Antibody) at dilution 1/20, treated with synthetic peptide. (Original magnification: x200)