

Product datasheet for **TA323880S**

ALS2CR1 (NIF3L1) Rabbit Polyclonal Antibody

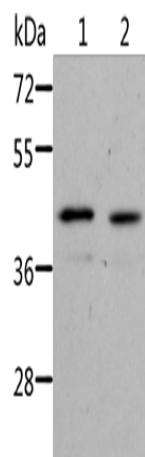
Product data:

Product Type:	Primary Antibodies
Applications:	IHC, WB
Recommended Dilution:	WB: 200-1000 WB positive control: Jurkat cells and human fetal kidney tissue IHC: 25-100 Positive control: Human liver cancer Predicted cell location: Cytoplasm
Reactivity:	Human, Mouse, Rat
Host:	Rabbit
Isotype:	IgG
Clonality:	Polyclonal
Immunogen:	Fusion protein corresponding to a region derived from 247-377 amino acids of human NIF3 NGG1 interacting factor 3-like 1 (<i>S. cerevisiae</i>)
Formulation:	PBS pH7.3, 0.05% NaN ₃ , 50% glycerol
Purification:	Antigen affinity purification
Conjugation:	Unconjugated
Storage:	Store at -20°C as received.
Stability:	Stable for 12 months from date of receipt.
Predicted Protein Size:	42 kDa
Gene Name:	NGG1 interacting factor 3 like 1
Database Link:	NP_001129511 Entrez Gene 65102 MouseEntrez Gene 301431 RatEntrez Gene 60491 Human Q9GZT8
Background:	NIF3-like protein 1 is a protein that in humans is encoded by the NIF3L1 gene. NIF3L1 has been shown to interact with COPS2. Expression analysis on cell lines revealed strong overexpression in a spermatogonia-derived cell line and a teratocarcinoma cell line. A human NIF3L1/GFP fusion protein showed localization of the protein in the cytoplasm.
Synonyms:	ALS2CR1; CALS-7; MDS015

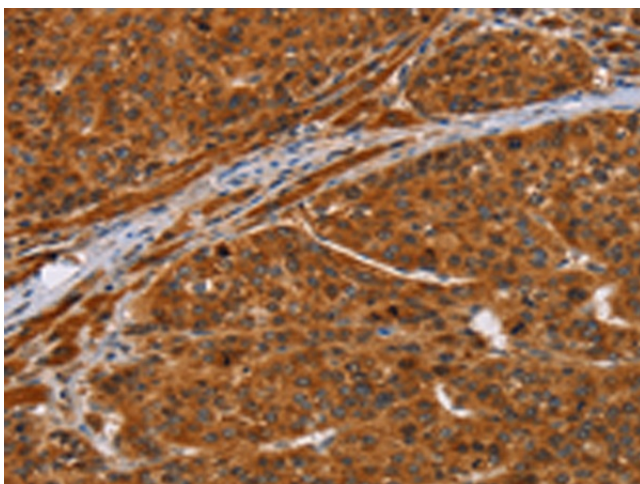


[View online »](#)

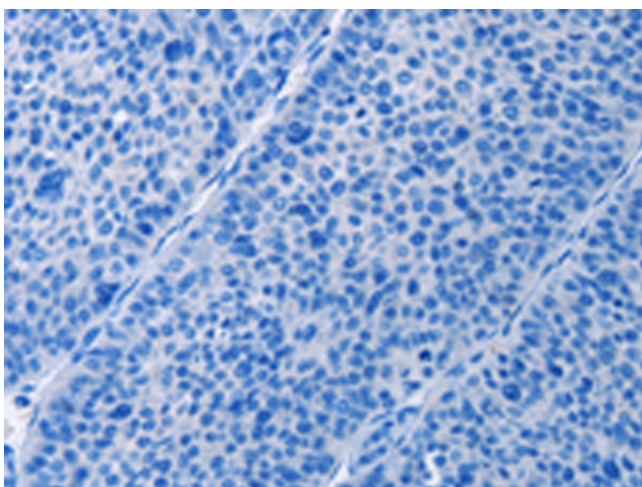
Product images:



Gel: 10%SDS-PAGE
Lysate: 40 μ g
Lane 1-2: Jurkat cells
human fetal kidney tissue
Primary antibody: [TA323880] (NIF3L1 Antibody)
at dilution 1/500
Secondary antibody: Goat anti rabbit IgG at
1/8000 dilution
Exposure time: 2 minutes



Immunohistochemistry of paraffin-embedded
Human liver cancer tissue using [TA323880]
(NIF3L1 Antibody) at dilution 1/20 (Original
magnification: \times 200)



Immunohistochemistry of paraffin-embedded Human liver cancer tissue using [TA323880] (NIF3L1 Antibody) at dilution 1/20, treated with fusion protein. (Original magnification: ×200)