

## Product datasheet for **TA323879S**

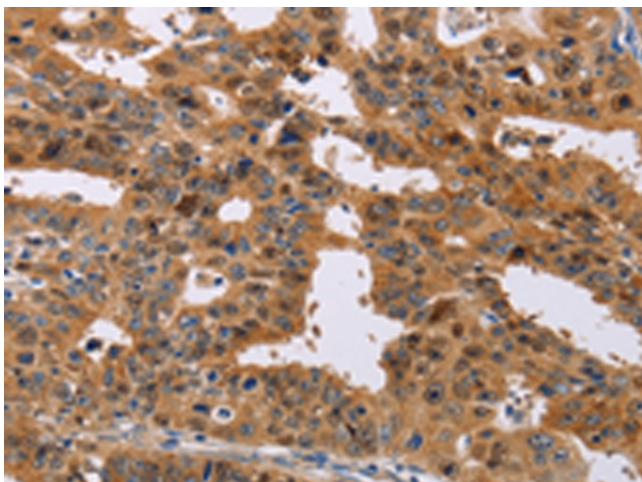
### ALS2CR1 (NIF3L1) Rabbit Polyclonal Antibody

#### Product data:

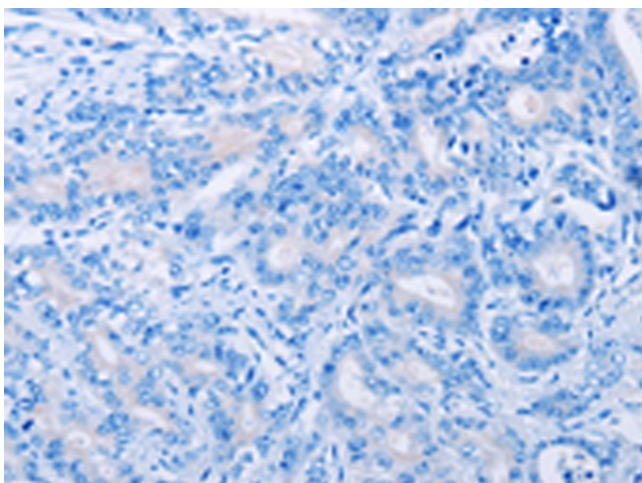
Product Type:	Primary Antibodies
Applications:	IHC
Recommended Dilution:	IHC: 50-200 Positive control: Human gastric cancer Predicted cell location: Cytoplasm
Reactivity:	Human, Mouse, Rat
Host:	Rabbit
Isotype:	IgG
Clonality:	Polyclonal
Immunogen:	Fusion protein corresponding to a region derived from 247-377 amino acids of human NIF3 NGG1 interacting factor 3-like 1 ( <i>S. cerevisiae</i> )
Formulation:	PBS pH7.3, 0.05% NaN <sub>3</sub> , 50% glycerol
Purification:	Antigen affinity purification
Conjugation:	Unconjugated
Storage:	Store at -20°C as received.
Stability:	Stable for 12 months from date of receipt.
Gene Name:	NGG1 interacting factor 3 like 1
Database Link:	<a href="#">NP_068596</a> <a href="#">Entrez Gene 65102 Mouse</a> <a href="#">Entrez Gene 301431 Rat</a> <a href="#">Entrez Gene 60491 Human</a> <a href="#">Q9GZT8</a>
Background:	NIF3-like protein 1 is a protein that in humans is encoded by the NIF3L1 gene. NIF3L1 has been shown to interact with COPS2. Expression analysis on cell lines revealed strong overexpression in a spermatogonia-derived cell line and a teratocarcinoma cell line. A human NIF3L1/GFP fusion protein showed localization of the protein in the cytoplasm.
Synonyms:	ALS2CR1; CALS-7; MDS015



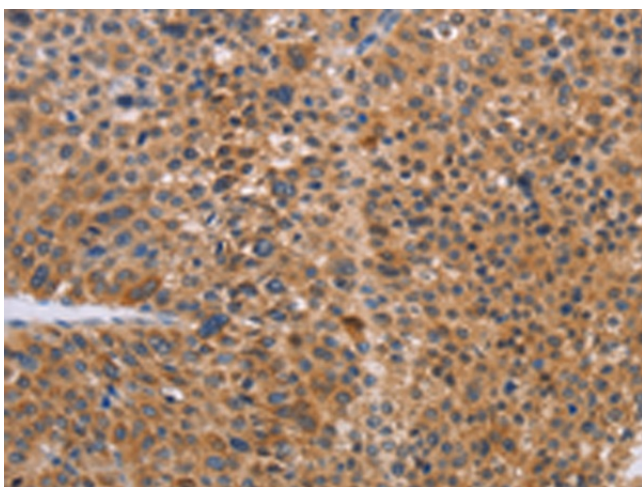
[View online »](#)

**Product images:**

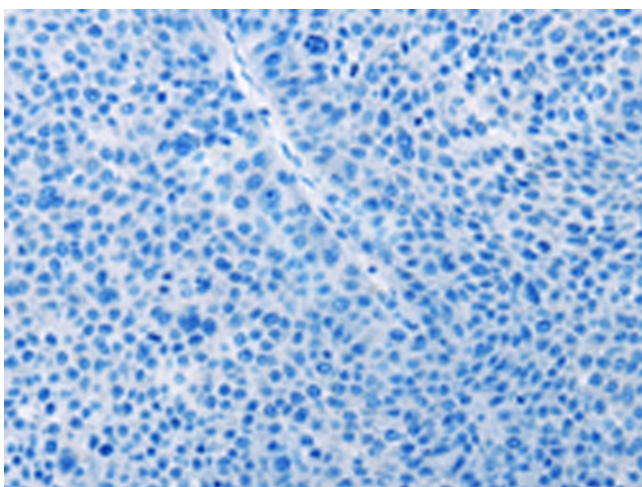
Immunohistochemistry of paraffin-embedded Human gastric cancer tissue using [TA323879] (NIF3L1 Antibody) at dilution 1/30 (Original magnification:  $\times 200$ )



Immunohistochemistry of paraffin-embedded Human gastric cancer tissue using [TA323879] (NIF3L1 Antibody) at dilution 1/30, treated with fusion protein. (Original magnification:  $\times 200$ )



Immunohistochemistry of paraffin-embedded Human liver cancer tissue using [TA323879] (NIF3L1 Antibody) at dilution 1/30 (Original magnification:  $\times 200$ )



Immunohistochemistry of paraffin-embedded Human liver cancer tissue using [TA323879] (NIF3L1 Antibody) at dilution 1/30, treated with fusion protein. (Original magnification:  $\times 200$ )