

Product datasheet for **TA323875**

ABL2 Rabbit Polyclonal Antibody

Product data:

| | |
|-------------------------|---------------------------------------------------------------------------------------------------------------------------------------------------------|
| Product Type: | Primary Antibodies |
| Applications: | IHC, WB |
| Recommended Dilution: | WB: 500-2000 WB positive control: Hela and Jurkat cells IHC: 25-100 Positive control: Human liver cancer Predicted cell location: Cytoplasm |
| Reactivity: | Human, Mouse |
| Host: | Rabbit |
| Isotype: | IgG |
| Clonality: | Polyclonal |
| Immunogen: | Synthetic peptide corresponding to a region derived from 2-14 amino acids of human v-abl Abelson murine leukemia viral oncogene homolog 2 |
| Formulation: | PBS pH7.3, 0.05% NaN ₃ , 50% glycerol |
| Concentration: | lot specific |
| Purification: | Antigen affinity purification |
| Conjugation: | Unconjugated |
| Storage: | Store at -20°C as received. |
| Stability: | Stable for 12 months from date of receipt. |
| Predicted Protein Size: | 128 kDa |
| Gene Name: | ABL proto-oncogene 2, non-receptor tyrosine kinase |
| Database Link: | NP_001129472 Entrez Gene 11352 Mouse Entrez Gene 27 Human P42684 |



[View online »](#)

Background:

This gene encodes a member of the Abelson family of nonreceptor tyrosine protein kinases. The protein is highly similar to the c-abl oncogene 1 protein; including the tyrosine kinase; SH2 and SH3 domains; and it plays a role in cytoskeletal rearrangements through its C-terminal F-actin- and microtubule-binding sequences. This gene is expressed in both normal and tumor cells; and is involved in translocation with the ets variant 6 gene in leukemia. Multiple alternatively spliced transcript variants encoding different protein isoforms have been found for this gene.

Synonyms:

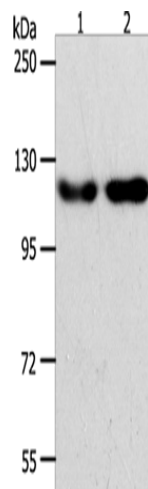
ABLL; ARG

Protein Families:

Druggable Genome, Protein Kinase

Protein Pathways:

ErbB signaling pathway, Viral myocarditis

Product images:

Gel: 8%SDS-PAGE

Lysate: 40 µg

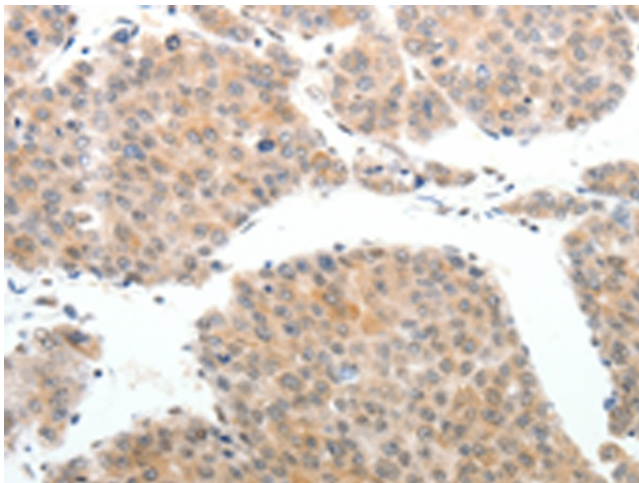
Lane 1-2: HeLa cells

Jurkat cells

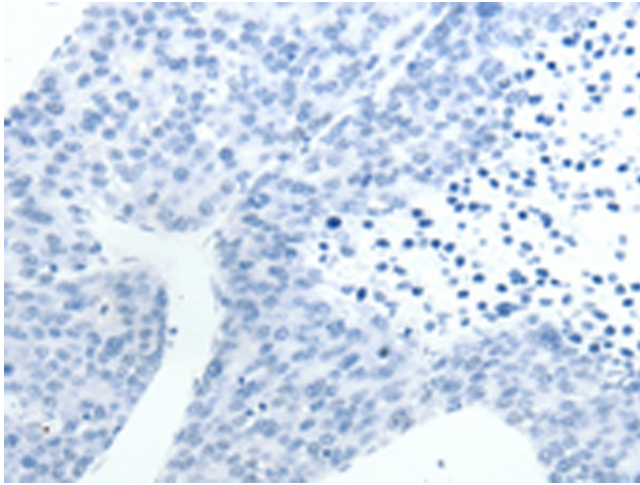
Primary antibody: TA323875 (ABL2 Antibody) at dilution 1/400

Secondary antibody: Goat anti rabbit IgG at 1/8000 dilution

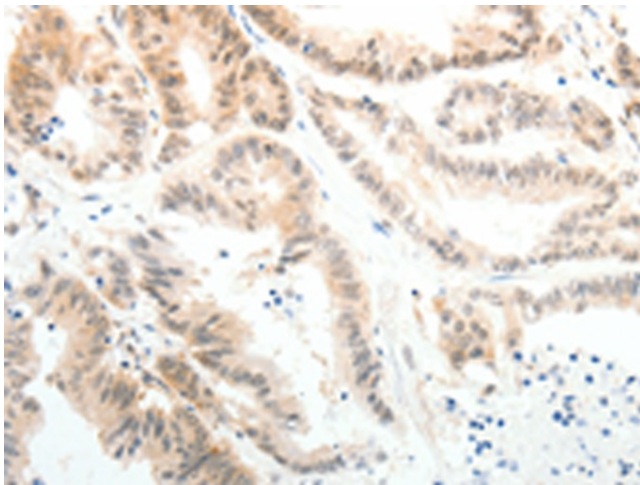
Exposure time: 2 minutes



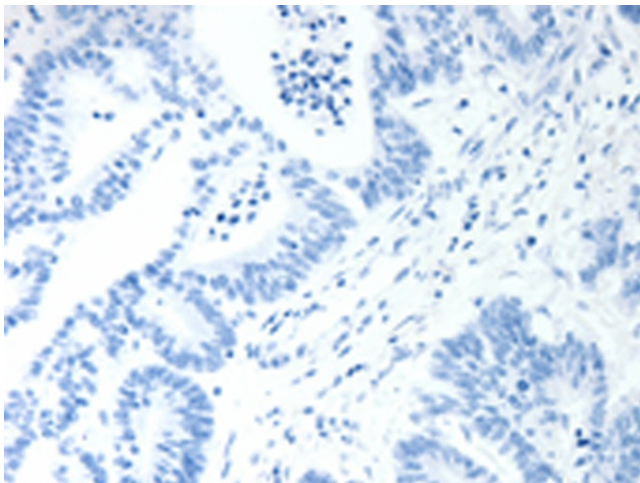
Immunohistochemistry of paraffin-embedded Human liver cancer tissue using TA323875 (ABL2 Antibody) at dilution 1/25 (Original magnification: ×200)



Immunohistochemistry of paraffin-embedded Human liver cancer tissue using TA323875 (ABL2 Antibody) at dilution 1/25, treated with synthetic peptide. (Original magnification: x200)



Immunohistochemistry of paraffin-embedded Human colon cancer tissue using TA323875 (ABL2 Antibody) at dilution 1/25 (Original magnification: x200)



Immunohistochemistry of paraffin-embedded Human colon cancer tissue using TA323875 (ABL2 Antibody) at dilution 1/25, treated with synthetic peptide. (Original magnification: x200)