

Product datasheet for **TA323873**

ALS2 Rabbit Polyclonal Antibody

Product data:

Product Type:	Primary Antibodies
Applications:	IHC
Recommended Dilution:	IHC: 25-100 Positive control: Human liver cancer Predicted cell location: Cytoplasm
Reactivity:	Human, Mouse, Rat
Host:	Rabbit
Isotype:	IgG
Clonality:	Polyclonal
Immunogen:	Fusion protein corresponding to C terminal 250 amino acids of human amyotrophic lateral sclerosis 2 (juvenile)
Formulation:	PBS pH7.3, 0.05% NaN ₃ , 50% glycerol
Concentration:	lot specific
Purification:	Antigen affinity purification
Conjugation:	Unconjugated
Storage:	Store at -20°C as received.
Stability:	Stable for 12 months from date of receipt.
Gene Name:	ALS2, alsin Rho guanine nucleotide exchange factor
Database Link:	NP_065970 Entrez Gene 74018 Mouse Entrez Gene 363235 Rat Entrez Gene 57679 Human Q96Q42



[View online »](#)

Background:

The protein encoded by this gene contains an ATS1/RCC1-like domain, a RhoGEF domain, and a vacuolar protein sorting 9 (VPS9) domain, all of which are guanine-nucleotide exchange factors that activate members of the Ras superfamily of GTPases. The protein functions as a guanine nucleotide exchange factor for the small GTPase RAB5. The protein localizes with RAB5 on early endosomal compartments, and functions as a modulator for endosomal dynamics. Mutations in this gene result in several forms of juvenile lateral sclerosis and infantile-onset ascending spastic paralysis. Multiple transcript variants encoding different isoforms have been found for this gene.

Synonyms:

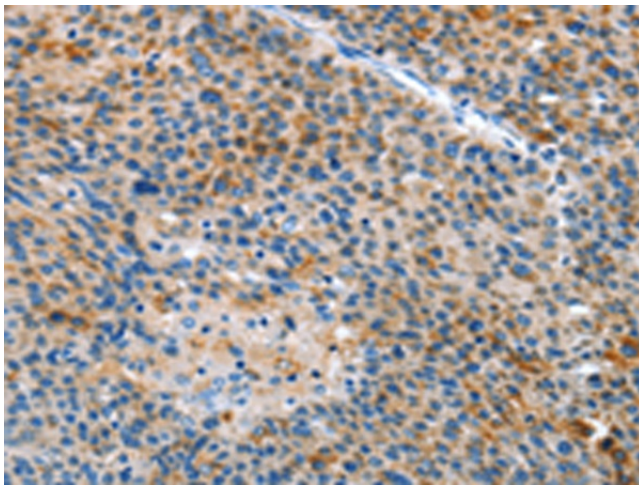
ALS2CR6; ALSJ; IAHSJ; PLSJ

Protein Families:

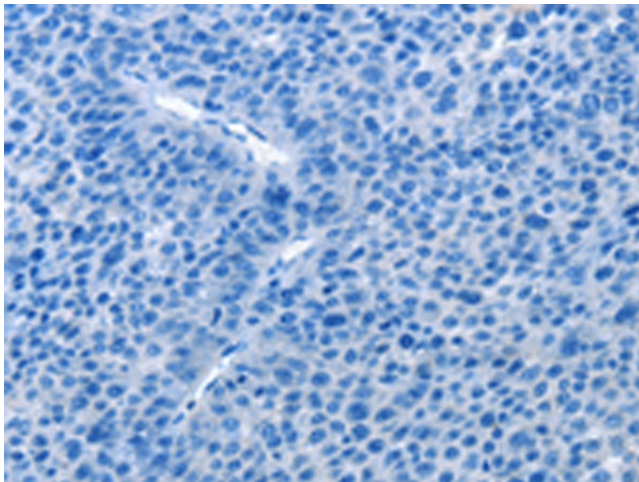
Druggable Genome

Protein Pathways:

Amyotrophic lateral sclerosis (ALS)

Product images:

Immunohistochemistry of paraffin-embedded Human liver cancer tissue using TA323873 (ALS2 Antibody) at dilution 1/25 (Original magnification: ×200)



Immunohistochemistry of paraffin-embedded Human liver cancer tissue using TA323873 (ALS2 Antibody) at dilution 1/25, treated with fusion protein. (Original magnification: ×200)