

Product datasheet for **TA323871**

LRP12 Rabbit Polyclonal Antibody

Product data:

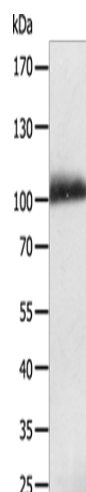
Product Type:	Primary Antibodies
Applications:	IHC, WB
Recommended Dilution:	WB: 200-1000 WB positive control: Human liver cancer tissue IHC: 25-100 Positive control: Human tonsil Predicted cell location: Cytoplasm
Reactivity:	Human, Mouse
Host:	Rabbit
Isotype:	IgG
Clonality:	Polyclonal
Immunogen:	Fusion protein corresponding to a region derived from 514-859 amino acids of human low density lipoprotein receptor-related protein 12
Formulation:	PBS pH7.3, 0.05% NaN ₃ , 50% glycerol
Concentration:	lot specific
Purification:	Antigen affinity purification
Conjugation:	Unconjugated
Storage:	Store at -20°C as received.
Stability:	Stable for 12 months from date of receipt.
Predicted Protein Size:	95 kDa
Gene Name:	LDL receptor related protein 12
Database Link:	NP_001129175 Entrez Gene 239393 Mouse Entrez Gene 29967 Human Q9Y561
Background:	This gene encodes a member of the low-density lipoprotein receptor related protein family. The product of this gene is a transmembrane protein that is differentially expressed in many cancer cells. Alternate splicing results in multiple transcript variants.
Synonyms:	ST7



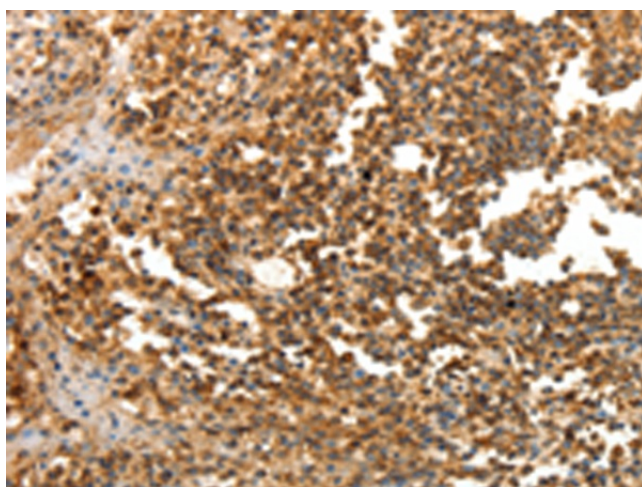
[View online »](#)

Protein Families: Druggable Genome, Transmembrane

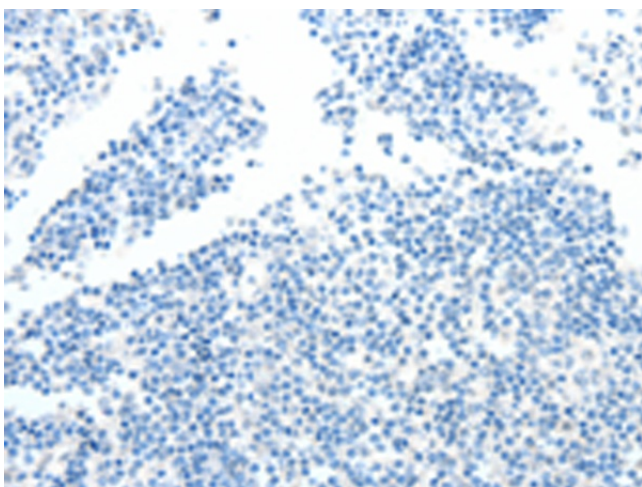
Product images:



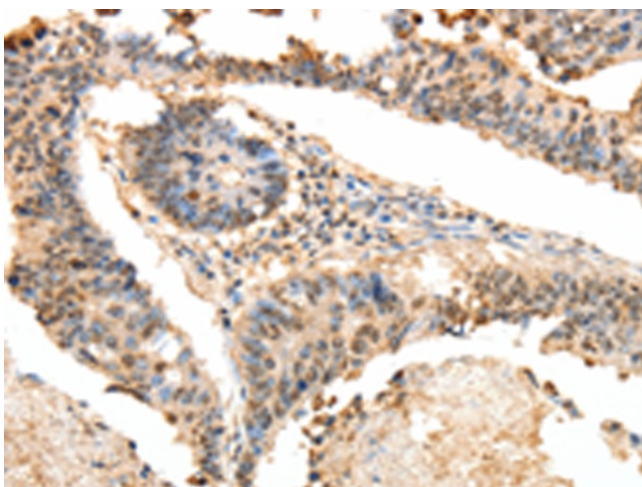
Gel: 8%SDS-PAGE
Lysate: 40 μ g
Lane: Human liver cancer tissue
Primary antibody: TA323871 (LRP12 Antibody) at dilution 1/200
Secondary antibody: Goat anti rabbit IgG at 1/8000 dilution
Exposure time: 10 minutes



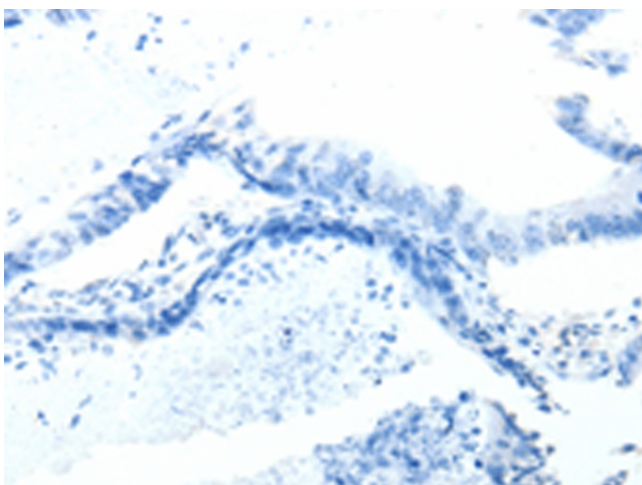
Immunohistochemistry of paraffin-embedded Human tonsil tissue using TA323871 (LRP12 Antibody) at dilution 1/25 (Original magnification: \times 200)



Immunohistochemistry of paraffin-embedded Human tonsil tissue using TA323871 (LRP12 Antibody) at dilution 1/25, treated with fusion protein. (Original magnification: $\times 200$)



Immunohistochemistry of paraffin-embedded Human colon cancer tissue using TA323871 (LRP12 Antibody) at dilution 1/25 (Original magnification: $\times 200$)



Immunohistochemistry of paraffin-embedded Human colon cancer tissue using TA323871 (LRP12 Antibody) at dilution 1/25, treated with fusion protein. (Original magnification: $\times 200$)