

## Product datasheet for **TA323869**

### 14-3-3 zeta (YWHAZ) Rabbit Polyclonal Antibody

#### Product data:

Product Type:	Primary Antibodies
Applications:	IF, IHC, WB
Recommended Dilution:	WB: 1:500-1000, IHC: 1:50-100, IF: 1:100-200
Reactivity:	Human, Mouse, Rat
Modifications:	Phospho-specific
Host:	Rabbit
Isotype:	IgG
Clonality:	Polyclonal
Immunogen:	Peptide sequence around phosphorylation site of serine 58 (R-S-S(p)-W-R) derived from Human 14-3-3 zeta.
Formulation:	PBS pH7.3, 0.05% NaN <sub>3</sub> , 50% glycerol
Concentration:	lot specific
Purification:	Antigen affinity purification
Conjugation:	Unconjugated
Storage:	Store at -20°C as received.
Stability:	Stable for 12 months from date of receipt.
Predicted Protein Size:	28 kDa
Gene Name:	tyrosine 3-monooxygenase/tryptophan 5-monooxygenase activation protein zeta
Database Link:	<a href="#">NP_663723</a> <a href="#">Entrez Gene 22631 Mouse</a> <a href="#">Entrez Gene 25578 Rat</a> <a href="#">Entrez Gene 7534 Human</a> <a href="#">P63104</a>
Background:	This gene product belongs to the 14-3-3 family of proteins which mediate signal transduction by binding to phosphoserine-containing proteins. This highly conserved protein family is found in both plants and mammals, and this protein is 99% identical to the mouse, rat and sheep orthologs. The encoded protein interacts with IRS1 protein, suggesting a role in regulating insulin sensitivity. Several transcript variants that differ in the 5' UTR but that encode the same protein have been identified for this gene.

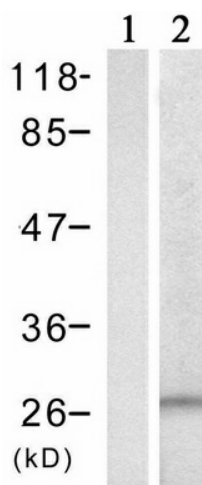


[View online »](#)

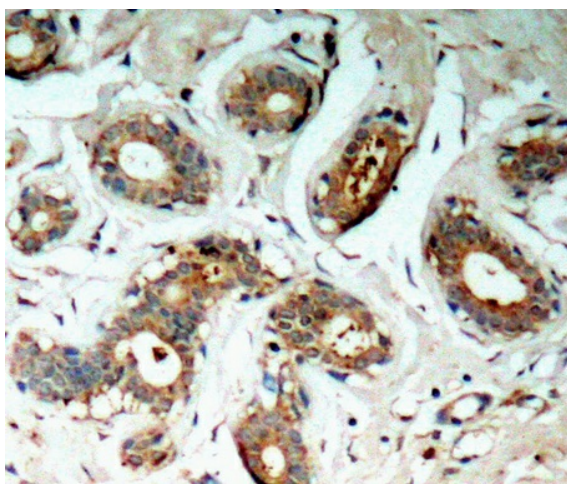
**Synonyms:** 14-3-3-zeta; HEL-S-3; HEL4; KCIP-1; YWHAD

**Protein Pathways:** Cell cycle, Neurotrophin signaling pathway, Oocyte meiosis, Pathogenic Escherichia coli infection

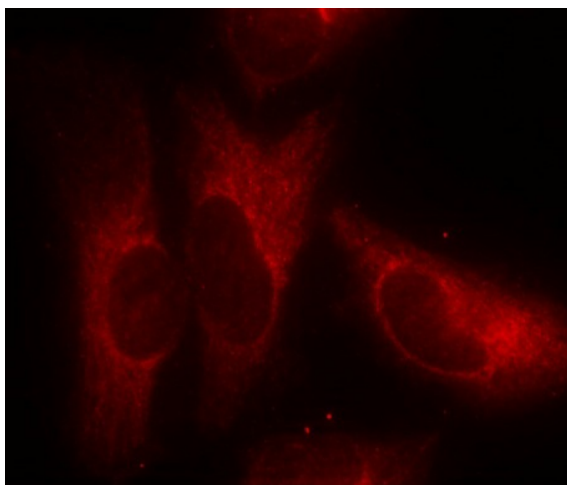
**Product images:**



Predicted band size: 28 kDa. Positive control: Hela cells untreated or treated with UV lysate. Recommended dilution: 1/ 500-1000. (Gel: 10%SDS-PAGE Lane 1: Hela cells untreated with UV lysate Lane 2: Hela cells treated with UV lysate Lysates: 30 ug per lane Primary antibody: 1/500 dilution Secondary antibody: Goat anti Rabbit IgG - H&L (HRP) at 1/10000 dilution Exposure time: 1 minute)



Predicted cell location: Cytoplasm; Melanosome. Positive control: Human breast carcinoma tissue. Recommended dilution: 1/ 50-100 The image is immunohistochemistry of paraffin-embedded human breast carcinoma tissue using YWHAZ (Phospho-Ser58) antibody at dilution 1/50. (Original magnification:×200)



Predicted cell location: Cytoplasm; Melanosome.  
Positive control: HeLa cells. Recommended dilution: 1/ 100-200. The image is immunofluorescence of methanol-fixed HeLa cells using YWHAZ (Phospho-Ser58) antibody at dilution 1/100. (Original magnification:×200)