

Product datasheet for **TA323867**

PTP kappa (PTPRK) Rabbit Polyclonal Antibody

Product data:

Product Type:	Primary Antibodies
Applications:	IHC
Recommended Dilution:	ELISA: 1:1000-5000, IHC: 1:25-100
Reactivity:	Human, Mouse, Rat
Host:	Rabbit
Isotype:	IgG
Clonality:	Polyclonal
Immunogen:	Full length fusion protein
Formulation:	PBS pH7.3, 0.05% NaN ₃ , 50% glycerol
Concentration:	lot specific
Purification:	Antigen affinity purification
Conjugation:	Unconjugated
Storage:	Store at -20°C as received.
Stability:	Stable for 12 months from date of receipt.
Gene Name:	protein tyrosine phosphatase, receptor type K
Database Link:	NP_002835 Entrez Gene 19272 Mouse Entrez Gene 360302 Rat Entrez Gene 5796 Human Q15262

Background: The protein encoded by this gene is a member of the protein tyrosine phosphatase (PTP) family. PTPs are known to be signaling molecules that regulate a variety of cellular processes including cell growth; differentiation; mitotic cycle; and oncogenic transformation. This PTP possesses an extracellular region; a single transmembrane region; and two tandem catalytic domains; and thus represents a receptor-type PTP. The extracellular region contains a meprin-A5 antigen-PTP mu (MAM) domain; an Ig-like domain and four fibronectin type III-like repeats. This PTP was shown to mediate homophilic intercellular interaction; possibly through the interaction with beta- and gamma-catenin at adherens junctions. Expression of this gene was found to be stimulated by TGF-beta 1; which may be important for the inhibition of keratinocyte proliferation.

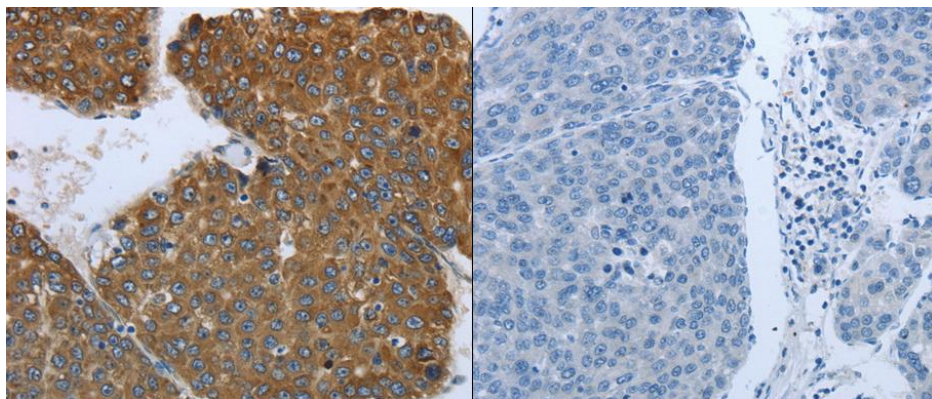


[View online »](#)

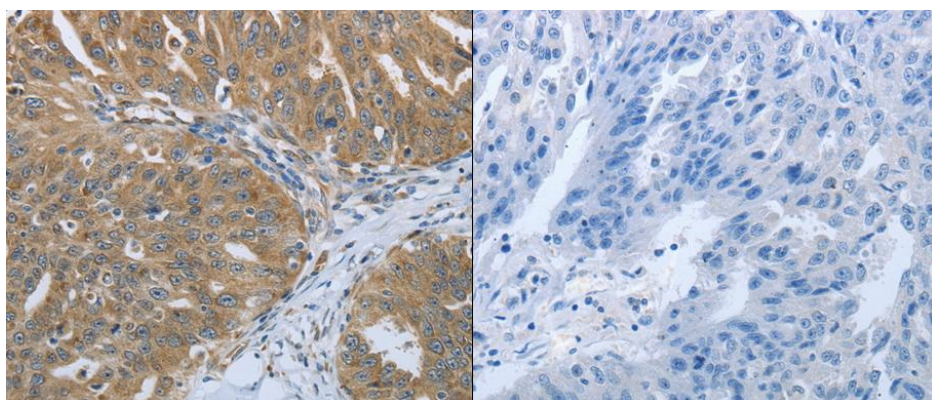
Synonyms: R-PTP-kappa

Protein Families: Druggable Genome, Phosphatase, Transmembrane

Product images:



Predicted cell location: Cytoplasm. Positive control: Human liver and ovarian cancer tissue. Recommended dilution: 1/25-100 The image on the left is immunohistochemistry of paraffin-embedded human liver cancer tissue using PTPRK antibody at dilution 1/25, on the right is treated with the fusion protein. (Original magnification:x 200)



Predicted cell location: Cytoplasm. Positive control: Human liver and ovarian cancer tissue. Recommended dilution: 1/25-100 The image on the left is immunohistochemistry of paraffin-embedded human ovarian cancer tissue using PTPRK antibody at dilution 1/25, on the right is treated with the fusion protein. (Original magnification:x200)