

## Product datasheet for **TA323859**

### SYK Rabbit Polyclonal Antibody

#### Product data:

Product Type:	Primary Antibodies
Applications:	IHC
Recommended Dilution:	IHC: 15-50 Positive control: Human lymphoma Predicted cell location: Cytoplasm
Reactivity:	Human, Mouse, Rat
Host:	Rabbit
Isotype:	IgG
Clonality:	Polyclonal
Immunogen:	Fusion protein corresponding to a region derived from C terminal 250 amino acids of human spleen tyrosine kinase
Formulation:	PBS pH7.3, 0.05% NaN <sub>3</sub> , 50% glycerol
Concentration:	lot specific
Purification:	Antigen affinity purification
Conjugation:	Unconjugated
Storage:	Store at -20°C as received.
Stability:	Stable for 12 months from date of receipt.
Gene Name:	spleen tyrosine kinase
Database Link:	<a href="#">NP_003168</a> <a href="#">Entrez Gene 20963 Mouse</a> <a href="#">Entrez Gene 25155 Rat</a> <a href="#">Entrez Gene 6850 Human</a> <a href="#">P43405</a>

**Background:** This gene encodes a member of the family of non-receptor type Tyr protein kinases. This protein is widely expressed in hematopoietic cells and is involved in coupling activated immunoreceptors to downstream signaling events that mediate diverse cellular responses; including proliferation; differentiation; and phagocytosis. It is thought to be a modulator of epithelial cell growth and a potential tumour suppressor in human breast carcinomas. Alternatively spliced transcript variants encoding different isoforms have been found for this gene.



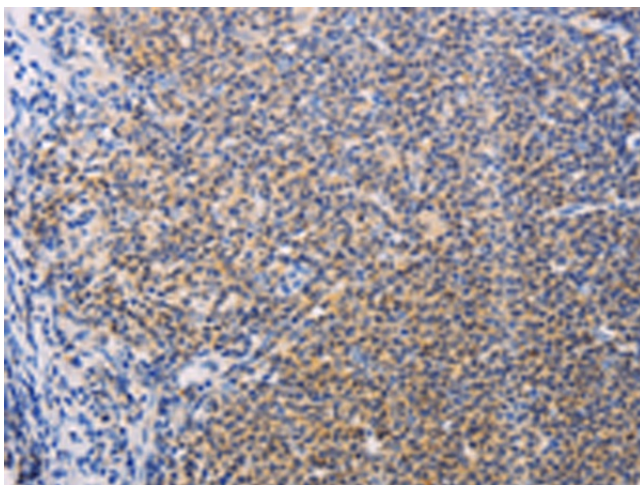
[View online »](#)

**Synonyms:** p72-Syk

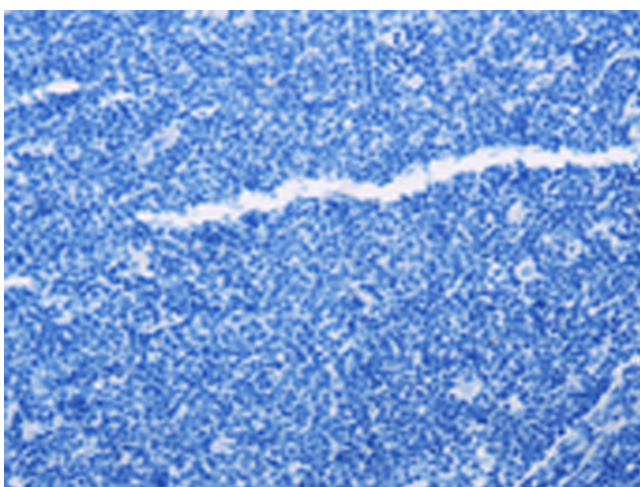
**Protein Families:** Druggable Genome, Protein Kinase

**Protein Pathways:** B cell receptor signaling pathway, Fc epsilon RI signaling pathway, Fc gamma R-mediated phagocytosis, Natural killer cell mediated cytotoxicity

**Product images:**



Immunohistochemistry of paraffin-embedded Human lymphoma tissue using TA323859 (SYK Antibody) at dilution 1/15 (Original magnification: ×200)



Immunohistochemistry of paraffin-embedded Human lymphoma tissue using TA323859 (SYK Antibody) at dilution 1/15, treated with fusion protein. (Original magnification: ×200)