

## Product datasheet for **TA323856**

### AFAP (AFAP1) Rabbit Polyclonal Antibody

#### Product data:

|                         |  |
|-------------------------|--|
| Product Type:           | Primary Antibodies   |
| Applications:           | IHC, WB  |
| Recommended Dilution:   | WB: 1000-5000<br>WB positive control: Hela cell lysate<br>IHC: 100-300<br>Positive control: Human colorectal cancer<br>Predicted cell location: Cytoplasm                        |
| Reactivity:             | Human, Mouse, Rat  |
| Host:                   | Rabbit   |
| Isotype:                | IgG  |
| Clonality:              | Polyclonal   |
| Immunogen:              | Fusion protein corresponding to C terminal 250 amino acids of human actin filament associated protein 1  |
| Formulation:            | PBS pH7.3, 0.05% NaN <sub>3</sub> , 50% glycerol   |
| Concentration:          | lot specific   |
| Purification:           | Antigen affinity purification  |
| Conjugation:            | Unconjugated   |
| Storage:                | Store at -20°C as received.  |
| Stability:              | Stable for 12 months from date of receipt.   |
| Predicted Protein Size: | 90 kDa   |
| Gene Name:              | actin filament associated protein 1  |
| Database Link:          | <a href="#">NP_001128119</a><br><a href="#">Entrez Gene 70292 Mouse</a> <a href="#">Entrez Gene 140935 Rat</a> <a href="#">Entrez Gene 60312 Human</a><br><a href="#">Q8N556</a> |



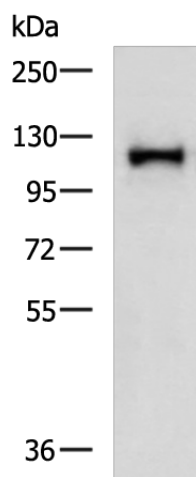
[View online »](#)

**Background:**

The protein encoded by this gene is a Src binding partner. It may represent a potential modulator of actin filament integrity in response to cellular signals, and may function as an adaptor protein by linking Src family members and/or other signaling proteins to actin filaments. Multiple transcript variants encoding different isoforms have been found for this gene.

**Synonyms:**

AFAP; AFAP-110; AFAP110

**Product images:**

Gel: 8%SDS-PAGE

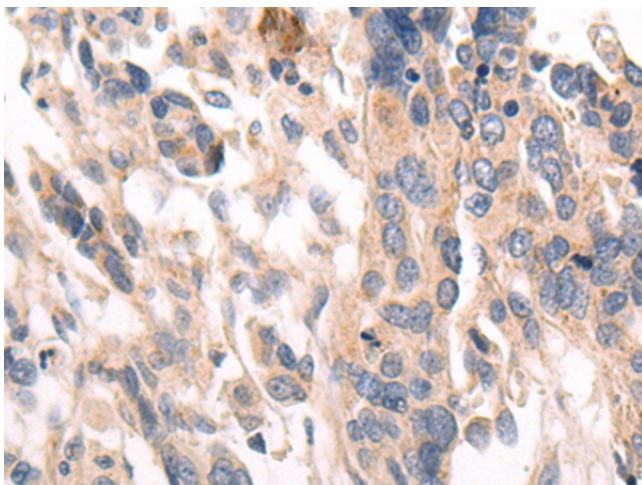
Lysate: 40 µg

Lane: Human brain malignant glioma tissue

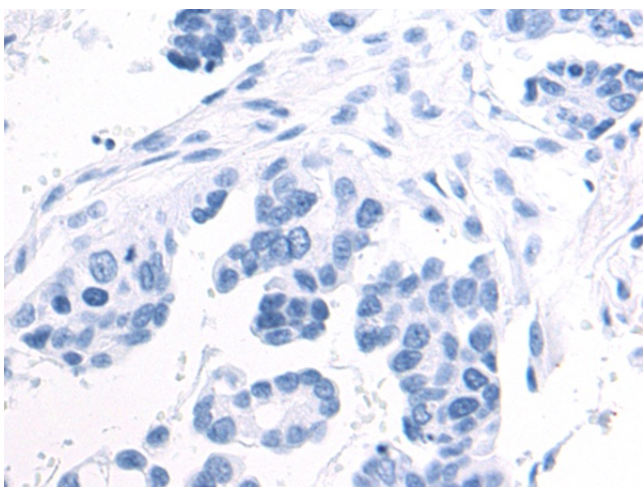
Primary antibody: TA323856 (AFAP1 Antibody) at dilution 1/116

Secondary antibody: Goat anti rabbit IgG at 1/8000 dilution

Exposure time: 1 minute



Immunohistochemistry of paraffin-embedded Human lung cancer tissue using TA323856 (AFAP1 Antibody) at dilution 1/20 (Original magnification: ×200)



Immunohistochemistry of paraffin-embedded Human lung cancer tissue using TA323856 (AFAP1 Antibody) at dilution 1/20, treated with fusion protein. (Original magnification: ×200)