

Product datasheet for **TA323855S**

AFAP (AFAP1) Rabbit Polyclonal Antibody

Product data:

Product Type:	Primary Antibodies
Applications:	IHC, WB
Recommended Dilution:	WB: 1000-5000 WB positive control: Hela cell lysate IHC: 50-100 Positive control: Human gastric cancer Predicted cell location: Cytoplasm
Reactivity:	Human, Mouse, Rat
Host:	Rabbit
Isotype:	IgG
Clonality:	Polyclonal
Immunogen:	Fusion protein corresponding to C terminal 250 amino acids of human actin filament associated protein 1
Formulation:	PBS pH7.3, 0.05% NaN ₃ , 50% glycerol
Concentration:	lot specific
Purification:	Antigen affinity purification
Conjugation:	Unconjugated
Storage:	Store at -20°C as received.
Stability:	Stable for 12 months from date of receipt.
Predicted Protein Size:	90 kDa
Gene Name:	actin filament associated protein 1
Database Link:	NP_001128119 Entrez Gene 70292 Mouse Entrez Gene 140935 Rat Entrez Gene 60312 Human Q8N556



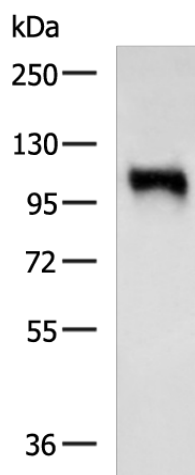
[View online »](#)

Background:

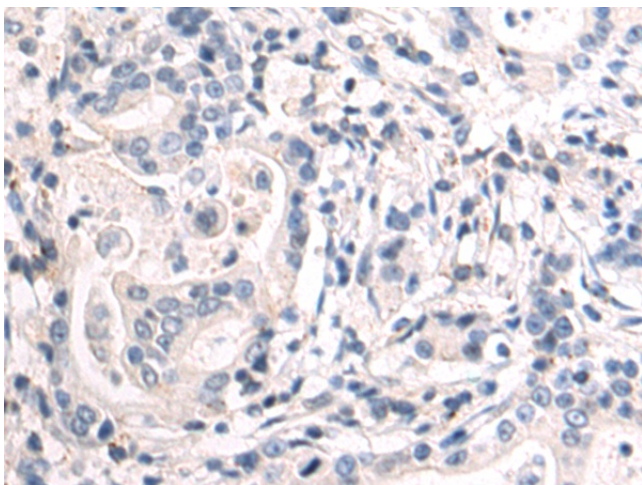
The protein encoded by this gene is a Src binding partner. It may represent a potential modulator of actin filament integrity in response to cellular signals, and may function as an adaptor protein by linking Src family members and/or other signaling proteins to actin filaments. Multiple transcript variants encoding different isoforms have been found for this gene.

Synonyms:

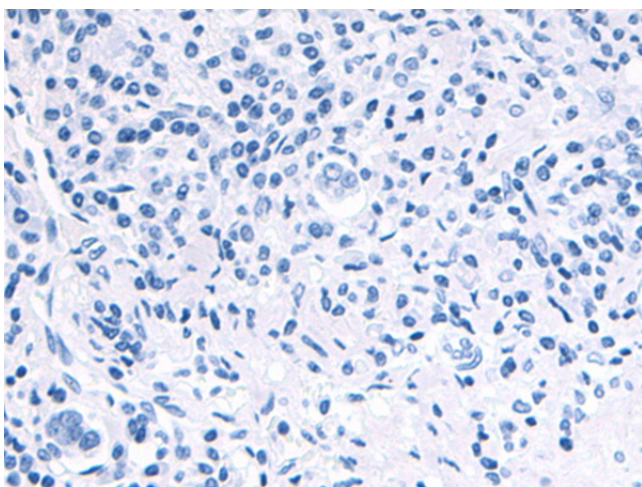
AFAP; AFAP-110; AFAP110

Product images:


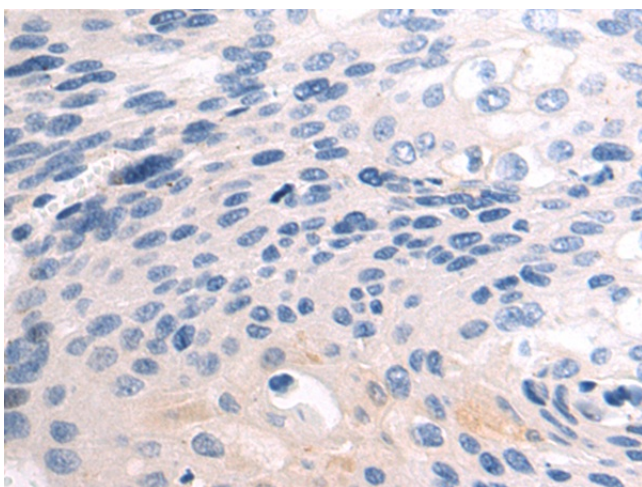
Gel: 8%SDS-PAGE
 Lysate: 40 µg
 Lane: A172 cells
 Primary antibody: [TA323855] (AFAP1 Antibody) at dilution 1/134
 Secondary antibody: Goat anti rabbit IgG at 1/8000 dilution
 Exposure time: 10 seconds



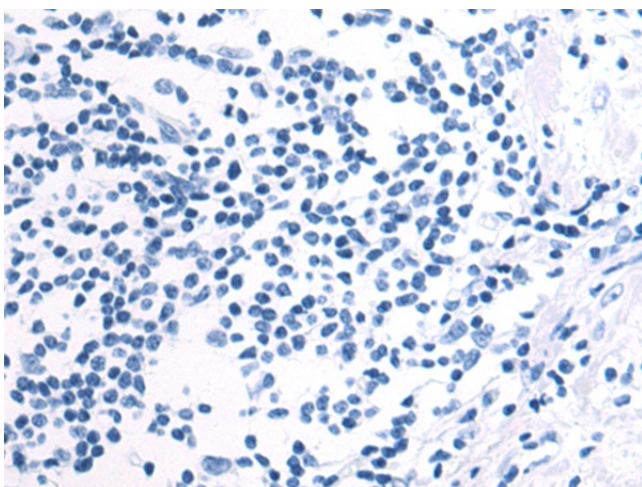
Immunohistochemistry of paraffin-embedded Human breast cancer tissue using [TA323855] (AFAP1 Antibody) at dilution 1/20 (Original magnification: ×200)



Immunohistochemistry of paraffin-embedded Human breast cancer tissue using [TA323855] (AFAP1 Antibody) at dilution 1/20, treated with fusion protein. (Original magnification: x200)



Immunohistochemistry of paraffin-embedded Human esophagus cancer tissue using [TA323855] (AFAP1 Antibody) at dilution 1/20 (Original magnification: x200)



Immunohistochemistry of paraffin-embedded Human esophagus cancer tissue using [TA323855] (AFAP1 Antibody) at dilution 1/20, treated with fusion protein. (Original magnification: x200)