

## Product datasheet for **TA323850S**

### TGF beta Receptor I (TGFBR1) Rabbit Polyclonal Antibody

#### Product data:

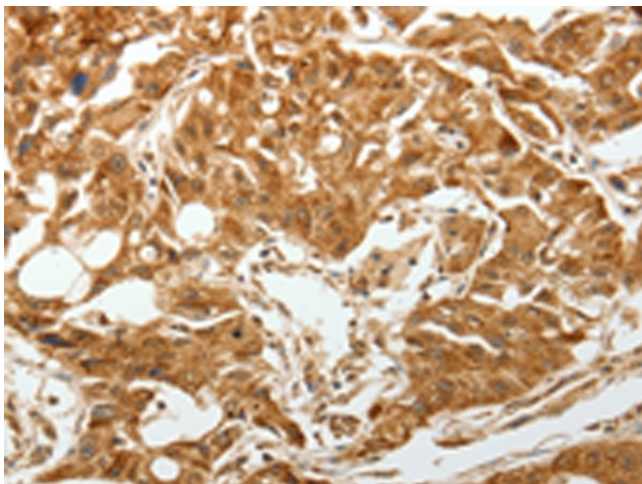
Product Type:	Primary Antibodies
Applications:	IHC
Recommended Dilution:	IHC: 50-200 Positive control: Human lung cancer Predicted cell location: Cytoplasm
Reactivity:	Human, Mouse, Rat
Host:	Rabbit
Isotype:	IgG
Clonality:	Polyclonal
Immunogen:	Synthetic peptide corresponding to a region derived from 158-172 amino acids of human transforming growth factor, beta receptor 1
Formulation:	PBS pH7.3, 0.05% NaN <sub>3</sub> , 50% glycerol
Purification:	Antigen affinity purification
Conjugation:	Unconjugated
Storage:	Store at -20°C as received.
Stability:	Stable for 12 months from date of receipt.
Gene Name:	transforming growth factor beta receptor 1
Database Link:	<a href="#">NP_004603</a> <a href="#">Entrez Gene 21812 Mouse</a> <a href="#">Entrez Gene 29591 Rat</a> <a href="#">Entrez Gene 7046 Human</a> <a href="#">P36897</a>
Background:	The protein encoded by this gene forms a heteromeric complex with type II TGF-beta receptors when bound to TGF-beta; transducing the TGF-beta signal from the cell surface to the cytoplasm. The encoded protein is a serine/threonine protein kinase. Mutations in this gene have been associated with Loeys-Dietz aortic aneurysm syndrome (LDAS). Multiple transcript variants encoding different isoforms have been found for this gene.
Synonyms:	AAT5; ACVRLK4; ALK-5; ALK5; ESS1; LDS1; LDS1A; LDS2A; MSSE; SKR4; tbetaR-I; TGFR-1
Protein Families:	Druggable Genome, Protein Kinase, Transmembrane



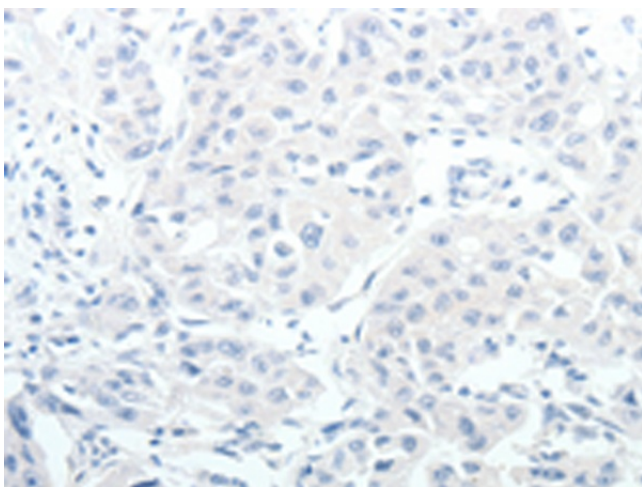
[View online »](#)

**Protein Pathways:** Adherens junction, Chronic myeloid leukemia, Colorectal cancer, Cytokine-cytokine receptor interaction, Endocytosis, MAPK signaling pathway, Pancreatic cancer, Pathways in cancer, TGF-beta signaling pathway

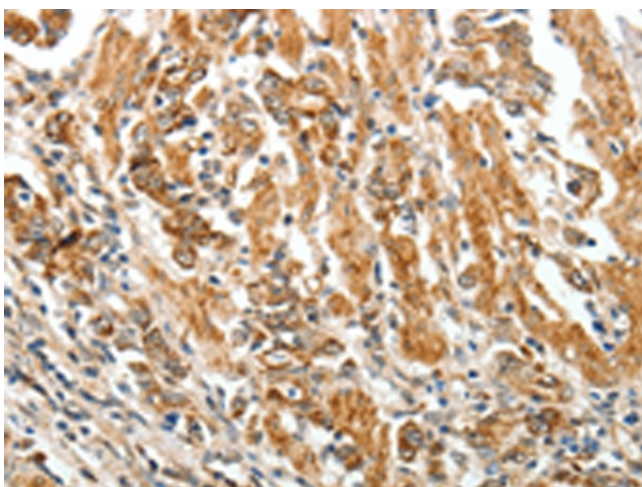
**Product images:**



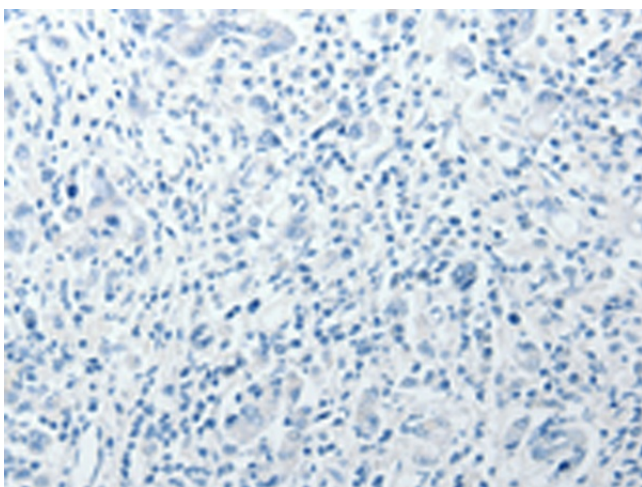
Immunohistochemistry of paraffin-embedded Human lung cancer tissue using [TA323850] (TGFB1 Antibody) at dilution 1/60 (Original magnification:  $\times 200$ )



Immunohistochemistry of paraffin-embedded Human lung cancer tissue using [TA323850] (TGFB1 Antibody) at dilution 1/60, treated with synthetic peptide. (Original magnification:  $\times 200$ )



Immunohistochemistry of paraffin-embedded Human gastric cancer tissue using [TA323850] (TGFB1 Antibody) at dilution 1/60 (Original magnification: ×200)



Immunohistochemistry of paraffin-embedded Human gastric cancer tissue using [TA323850] (TGFB1 Antibody) at dilution 1/60, treated with synthetic peptide. (Original magnification: ×200)