

Product datasheet for **TA323849**

BTG3 Rabbit Polyclonal Antibody

Product data:

Product Type:	Primary Antibodies
Applications:	IHC, WB
Recommended Dilution:	WB: 1000-5000 WB positive control: Mouse testis tissue lysate IHC: 100-200 Positive control: Human liver cancer Predicted cell location: Cytoplasm
Reactivity:	Human, Mouse
Host:	Rabbit
Isotype:	IgG
Clonality:	Polyclonal
Immunogen:	Fusion protein corresponding to a region derived from 22-252 amino acids of human BTG family, member 3BTG family, member 3
Formulation:	PBS pH7.3, 0.05% NaN ₃ , 50% glycerol
Concentration:	lot specific
Purification:	Antigen affinity purification
Conjugation:	Unconjugated
Storage:	Store at -20°C as received.
Stability:	Stable for 12 months from date of receipt.
Predicted Protein Size:	29 kDa
Gene Name:	BTG family member 3
Database Link:	NP_001124386 Entrez Gene 12228 Mouse Entrez Gene 10950 Human Q14201



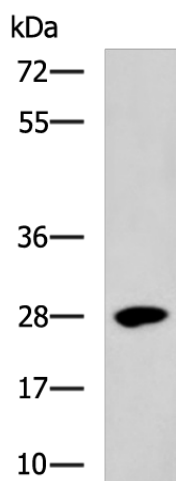
[View online »](#)

Background:

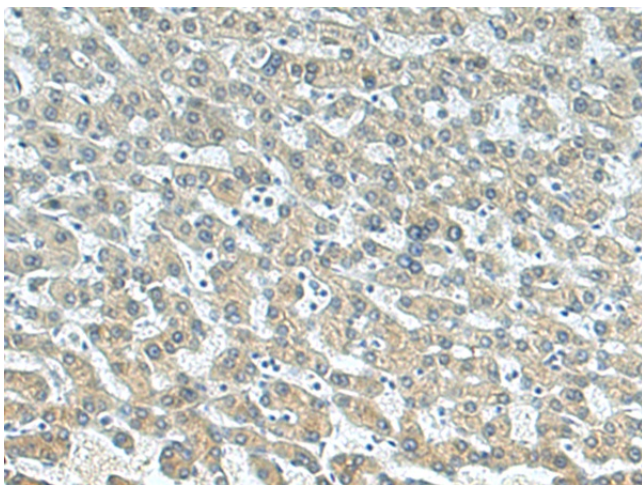
The protein encoded by this gene is a member of the BTG/Tob family. This family has structurally related proteins that appear to have antiproliferative properties. This encoded protein might play a role in neurogenesis in the central nervous system. Two transcript variants encoding different isoforms have been found for this gene. Overexpression impairs serum-induced cell cycle progression from the G0/G1 to S phase.

Synonyms:

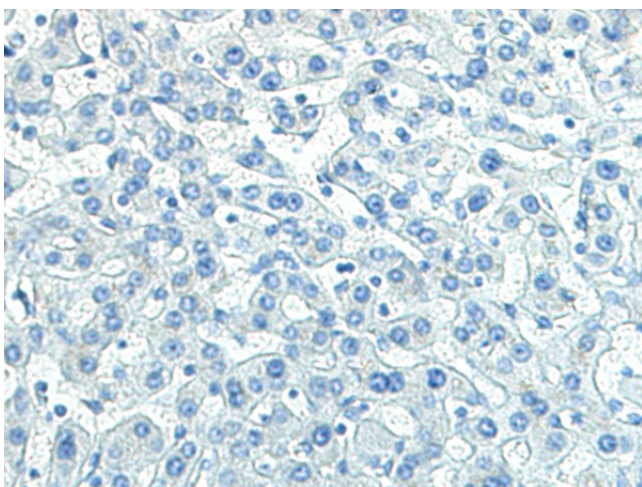
ANA; APRO4; TOB5; TOB55; TOFA

Product images:

Gel: 8%SDS-PAGE
Lysate: 40 µg
Lane: Mouse testis tissue lysate
Primary antibody: TA323849 (BTG3 Antibody) at dilution 1/1000
Secondary antibody: Goat anti rabbit IgG at 1/5000 dilution
Exposure time: 2 minutes



Immunohistochemistry of paraffin-embedded Human liver cancer tissue using TA323849 (BTG3 Antibody) at dilution 1/140 (Original magnification: ×200)



Immunohistochemistry of paraffin-embedded Human liver cancer tissue using TA323849 (BTG3 Antibody) at dilution 1/140, treated with fusion protein. (Original magnification: ×200)